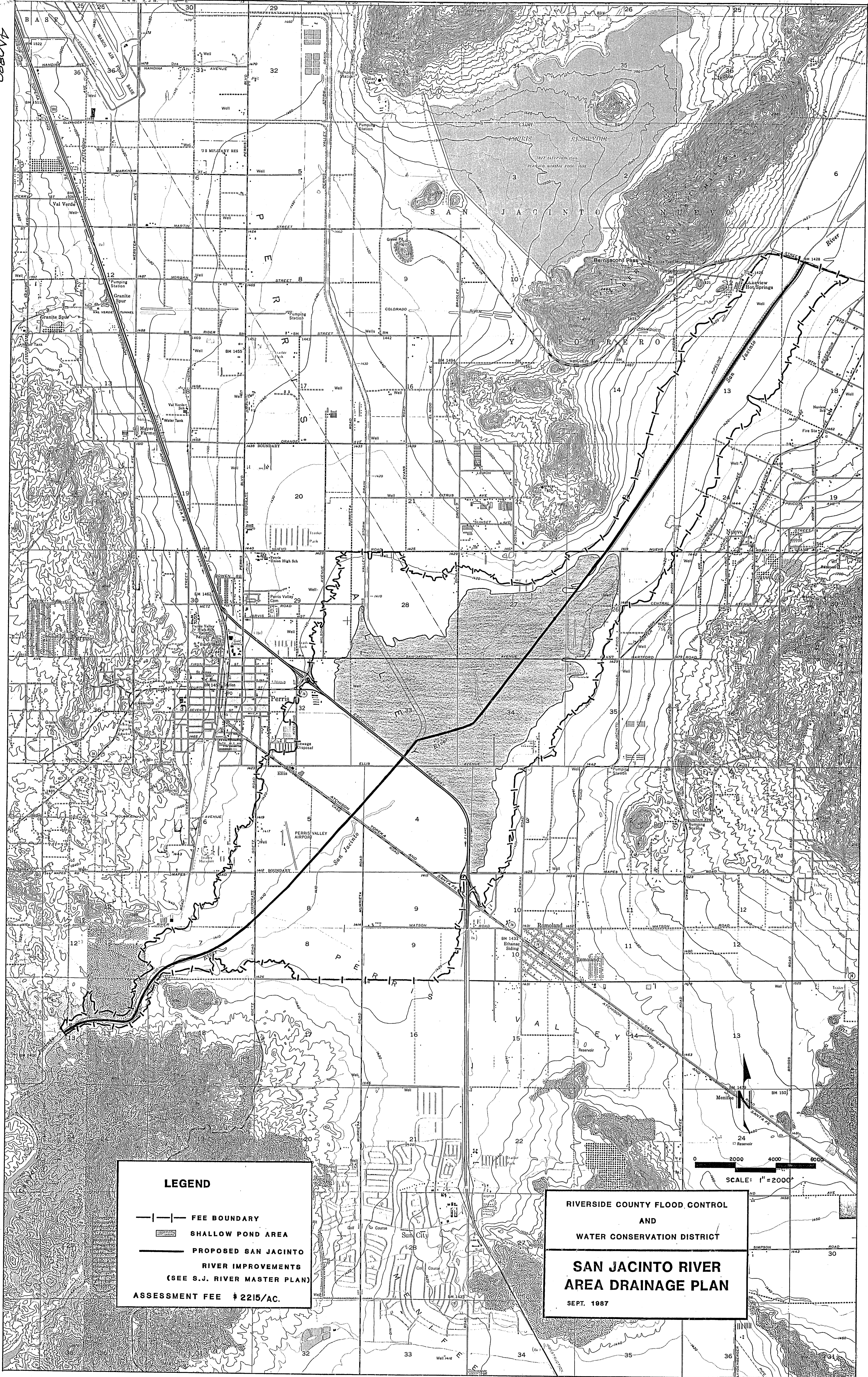


4A0880



LEGEND

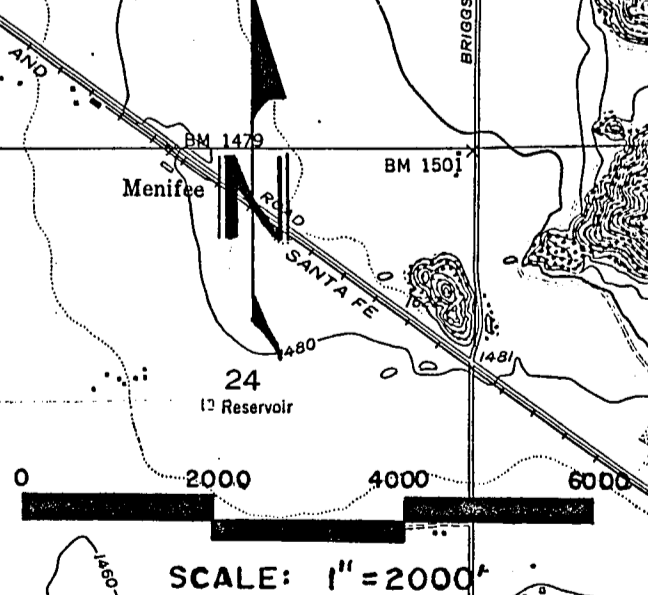
- |—|— FEE BOUNDARY
- ▨ SHALLOW POND AREA
- PROPOSED SAN JACINTO RIVER IMPROVEMENTS (SEE S.J. RIVER MASTER PLAN)

ASSESSMENT FEE \$ 2215/AC.

RIVERSIDE COUNTY FLOOD CONTROL AND WATER CONSERVATION DISTRICT

SAN JACINTO RIVER AREA DRAINAGE PLAN

SEPT. 1987



4A0880