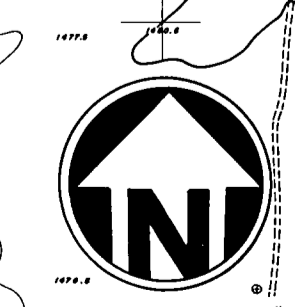


- LEGEND**
- MASTER PLAN BOUNDARY
  - OPEN CHANNEL - CONC LINED (TRAPEZOIDAL SECTION 33:1.5-1)
  - UNDERGROUND STORM DRAINS
  - DIRT TRAP CHANNEL (33+3-1)
  - Q = 450 cfs 10 YEAR FLOW RATE
  - Q = 450 cfs 100 YEAR FLOW RATE



1"=500'

TOTAL COST OF PLAN : \$7,394,000  
 RIVERSIDE COUNTY FLOOD CONTROL  
 AND  
 WATER CONSERVATION DISTRICT  
**WINCHESTER  
 MASTER DRAINAGE PLAN**  
 SEPT 1987