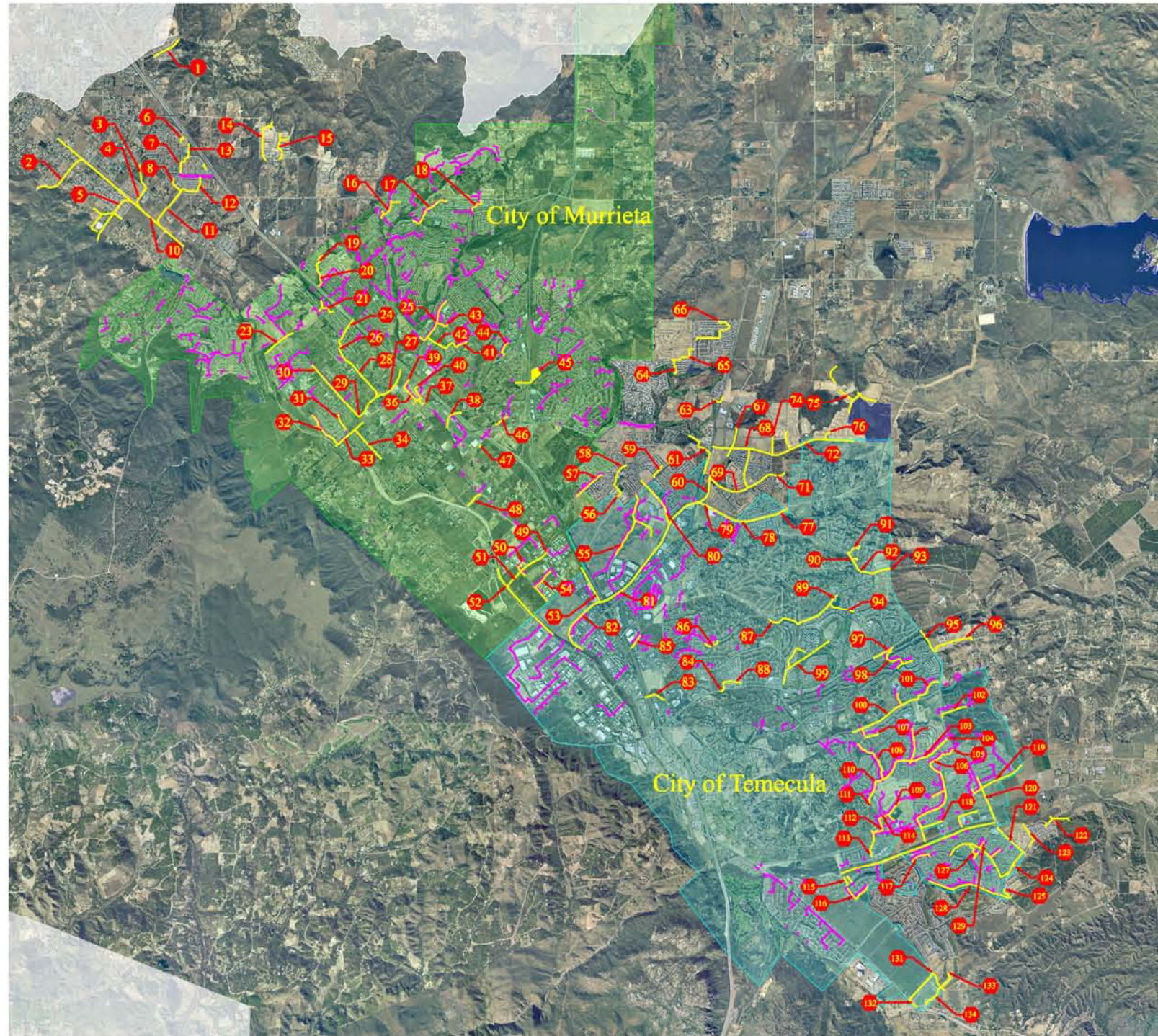


APPENDIX D
SMR MS4 Map

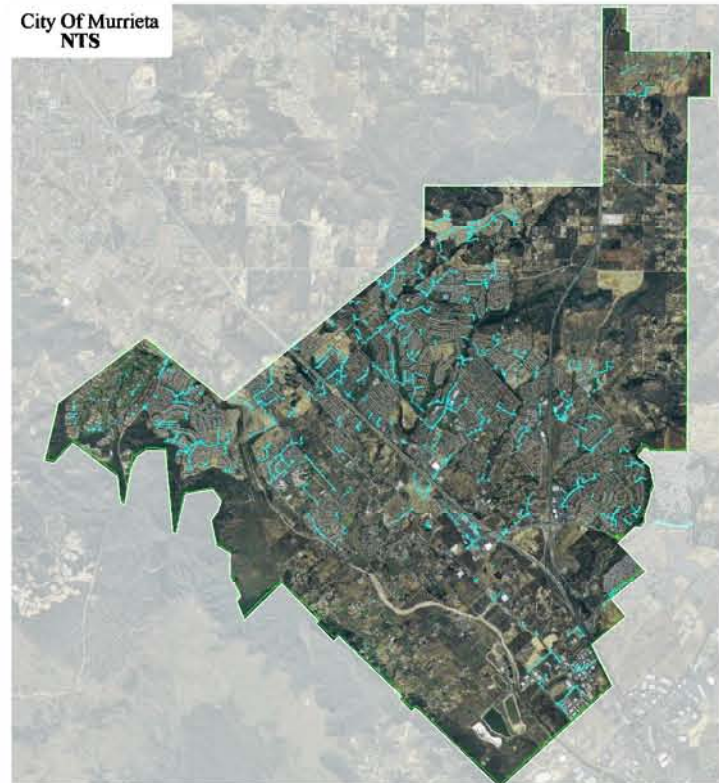
Exhibit A
NTS



Nodes

- 1) Wildomar @ Randy Canyon Channel
- 2) Wildomar Channel Lateral A
- 3) Wildomar Channel Lateral C Stage 2
- 4) Wildomar Channel Lateral C Stage 1
- 5) Wildomar Channel Lateral A, B, D, E
- 6) Wildomar @ Friedrich Storm Drain
- 7) Wildomar @ Jackson Storm Drain
- 8) Wildomar Channel Lateral E Stage 2
- 9) Wildomar Channel Lateral E Stage 1
- 10) Wildomar Channel Lateral E Stage 1
- 11) Wildomar Channel Lateral E
- 12) Wildomar Channel Lateral E Stage 2
- 13) Wildomar @ Cotton School 1992 Imp.
- 14) Murrieta Valley Line 11 Stage 1
- 15) Murrieta Valley Line 11 Stage 1
- 16) California Oaks @ Korman Wharf
- 17) California Oaks @ Neasing Green
- 18) California Oaks @ Via Segovia
- 19) Murrieta Valley @ Oak Creek Storm Drain
- 20) Murrieta Valley @ Oak Creek Storm Drain Stage 2
- 21) Murrieta Creek MGP Line C Stage 1
- 22) Murrieta Creek MGP Line C Stage 1
- 23) Murrieta Creek F 1 1993 Imp. Stage 2
- 24) Murrieta Creek F 1 1993 Imp. Stage 1
- 25) California Oaks Stage 2 from A, E
- 26) Murrieta Creek F 1 1993 Imp. Stage 1
- 27) Murrieta Creek MGP Line E1
- 28) Murrieta Creek MGP Line F1
- 29) Murrieta Creek ADP Line F3 Stage 2
- 30) Murrieta Creek ADP Line F3 Stage 2
- 31) Murrieta Valley @ Whipping Willow
- 32) Murrieta Valley @ Cahn Farms Storm Drain
- 33) Murrieta Creek @ Kalmia Street Storm Drain
- 34) Murrieta Creek @ New City Avenue
- 35) Murrieta Creek MGP Line D1 Stage 2
- 36) Murrieta Creek ADP Line F Stage 2
- 37) Murrieta Creek MGP Line D Stage 1
- 38) Murrieta Creek MGP Line D Stage 1
- 39) Murrieta Creek MGP Line E1 Stage 2
- 40) Murrieta Creek ADP Line 2
- 41) California Oaks Line A Stage 4
- 42) California Oaks Line A Stage 3
- 43) California Oaks Line A C Stage 2
- 44) Murrieta Valley @ Cotton Way Storm Drain
- 45) Murrieta Valley @ 1212 Penelope Basin
- 46) Murrieta Creek @ Medical Center Storm Drain
- 47) Murrieta Creek Line 21
- 48) Warm Springs @ Fire View Storm Drain
- 49) Warm Springs Creek
- 50) Warm Springs Channel Stage 2
- 51) Warm Springs Channel Stage 1
- 52) Murrieta Creek Channel Stage 1
- 53) Santa Gertrudis Lateral A, B
- 54) Santa Gertrudis @ Adam Seven Drain
- 55) Santa Gertrudis @ Marston Basin Drain
- 56) Warm Springs @ Torrey Pines Stage 2
- 57) Warm Springs @ C. Sugarberry
- 58) Warm Springs @ Torrey Pines Road Storm Drain
- 59) Santa Gertrudis Lateral A, B
- 60) Santa Gertrudis @ Tactalia Creek Stage 2
- 61) Santa Gertrudis @ Winchester Road Storm Drain
- 62) Warm Springs @ Kowalevich
- 63) Warm Springs @ Hunter Road Storm Drain
- 64) Warm Springs @ Hunter Road Storm Drain
- 65) Warm Springs @ Hunter Road Storm Drain
- 66) Warm Springs @ Hunter Road Storm Drain
- 67) Santa Gertrudis @ Tactalia Creek
- 68) Santa Gertrudis Line 600
- 69) Santa Gertrudis Line 1180 and 1200
- 70) Santa Gertrudis @ Torrey Pines Stage 2
- 71) Murrieta Hot Springs Road Stage 2
- 72) Santa Gertrudis Line 600
- 73) Santa Gertrudis Line A, B, C
- 74) Santa Gertrudis @ Red Bridge Road Lateral
- 75) Santa Gertrudis @ Kowalevich Road
- 76) Santa Gertrudis Stage 4
- 77) Santa Gertrudis @ Santa Ysabel
- 78) Santa Gertrudis @ Magistrate Road Storm Drain
- 79) Santa Gertrudis Channel Stage 3
- 80) Santa Gertrudis Channel Stage 2
- 81) Murrieta Creek @ Juniper Creek
- 82) Murrieta Valley @ Basilio California Road
- 83) Temecula Valley @ Trestle Road Storm Drain
- 84) Temecula Valley @ Avenida Vista
- 85) Temecula Valley Line A
- 86) Temecula Valley @ Long Valley Wash Channel Stage 2
- 87) Temecula Valley @ La Seneca Way Storm Drain
- 88) Temecula Valley @ Leigh Court Storm Drain
- 89) Temecula Valley @ Colby Lane Storm Drain
- 90) Temecula Valley @ Long Court Storm Drain Stage 2
- 91) Temecula Valley @ Long Court Storm Drain Stage 2
- 92) Temecula Valley @ La Seneca Way Storm Drain Stage 2
- 93) Temecula Valley @ Butterfield Stage Road Storm Drain
- 94) Temecula Valley @ Butterfield Stage Road Storm Drain Stage 2
- 95) Temecula Valley @ Long Valley Wash Stage 1
- 96) Temecula Valley @ Camino Mariposa
- 97) Temecula Valley @ Margarita Road Storm Drain
- 98) Temecula Valley @ Pulte Road Lateral School
- 99) Temecula Valley @ Pulte Road Stage 2
- 100) Butterfield Road @ Royal Creek
- 101) Murrieta Valley @ Patena Del Sol Storm Drain
- 102) Temecula Creek Line E1, E
- 103) Temecula Creek Line 1
- 104) Temecula Creek Line A
- 105) Temecula Valley @ Patena Del Sol Storm Drain
- 106) Murrieta Valley @ Patena Del Sol Storm Drain
- 107) Temecula Creek Line W, C, D, E
- 108) Murrieta Valley @ Pine Point Road 1990 Improvement
- 109) Temecula Valley Line A Stage 1
- 110) Temecula Creek Line W Stage 2
- 111) Temecula Creek Line W Stage 2
- 112) Temecula Valley @ Via del Coronado Storm Drain
- 113) Temecula Valley @ Via del Coronado Storm Drain
- 114) Temecula Valley @ Crowfoot Trail
- 115) Temecula Valley @ Mahler Val Storm Drain Line 5
- 116) Temecula Creek Channel Lines A, B
- 117) Butterfield Stage Road @ De Peruvia
- 118) Temecula Valley @ Butterfield Stage B Mather Road
- 119) Temecula Creek Line B Improvement
- 120) Temecula Creek Line A Improvement
- 121) Temecula Valley @ El Chino 1990 Improvement
- 122) Temecula Valley @ El Chino 1990 Improvement
- 123) Temecula Valley @ El Chino 1990 Improvement
- 124) Temecula Valley @ El Chino 1990 Improvement
- 125) Temecula Valley @ El Chino 1990 Improvement
- 126) Temecula Valley @ El Chino 1990 Improvement
- 127) Temecula Valley @ El Chino 1990 Improvement
- 128) Temecula Valley @ El Chino 1990 Improvement
- 129) Temecula Valley @ El Chino 1990 Improvement
- 130) Temecula Valley @ El Chino 1990 Improvement
- 131) Wolf Valley @ Deer Hollow Storm Drain Line B
- 132) Wolf Valley @ Peckham Storm Drain Line A1
- 133) Wolf Valley @ Peckham Storm Drain Stage 2 Line A
- 134) Wolf Valley @ Peckham Storm Drain Line A2

City Of Murrieta
NTS



City Of Temecula
NTS

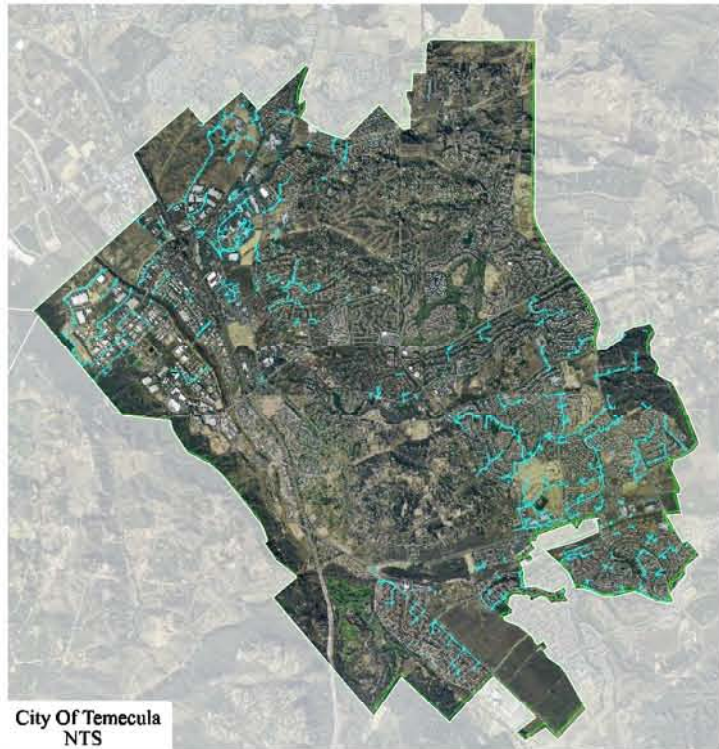
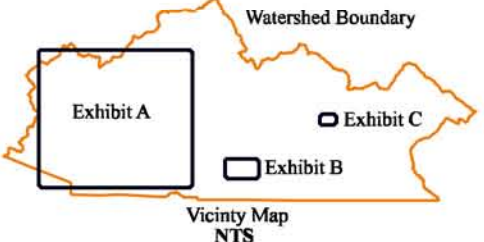


Exhibit B - Wilson Creek @ Sage Rd Bridge
NTS



Exhibit C - Anza Creek Channel Line A Stage 1
NTS



**Santa Margarita Watershed
Facilities Map**

- City/County Facility
 - District Facility
 - City Facility
 - Node Point
- Drawn By: WMCII Maps are NOT TO SCALE

