

PUBLIC REVIEW DRAFT

CITY OF TEMECULA
STORMWATER MANAGEMENT PLAN

May 23, 2005

TABLE OF CONTENTS

<u>SECTION</u>	<u>PAGE</u>
1.0 EXECUTIVE SUMMARY	1
2.0 INTRODUCTION TO THE CITY OF TEMECULA STORMWATER MANAGEMENT PLAN.....	2
2.1 Program Overview	2
2.2 Description of MS4.....	2
3.0 PROGRAM MANAGEMENT	4
3.1 Permittee Departmental Responsibilities	4
3.2 Watershed and Permittee Cooperative Activities	6
3.3 Fiscal Analysis	7
3.4 Legal Authority.....	8
3.5 Enforcement.....	10
4.0 ELIMINATION OF ILLICIT CONNECTIONS AND ILLEGAL DISCHARGES	11
5.0 MUNICIPAL FACILITIES AND ACTIVITIES	14
5.1 Planning Public Agency Facilities	14
5.2 Public Agency Construction Activities.....	14
5.3 Operation and Maintenance of Public Agency Facilities.....	14
5.4 Fire BMPs	15
5.5 Training for Municipal Maintenance Employees	15
6.0 DEVELOPMENT PLANNING	16
6.1 Introduction.....	16
6.2 General Plan.....	16
6.2.1 General Plan Review and Amendment.....	16
6.3 CEQA Environmental Review Process	17
6.4 Development Project Review, Approval, and Permitting.....	18
6.5 Training.....	18
7.0 PRIVATE DEVELOPMENT CONSTRUCTION ACTIVITY	19
7.1 Construction Site Inventory	19
7.2 Construction Site Inspection.....	19
8.0 INDUSTRIAL AND COMMERCIAL SOURCES	20
8.1 Industrial/Commercial Facility Database	20
8.2 SMR Minimum BMPs for Industrial/Commercial Facilities.....	20
9.0 RESIDENTIAL SOURCES	22
9.1 High Priority Residential Activities.....	22

9.2 Minimum BMPs for Residential Activities 22
9.3 Enforcement..... 22
10.0 PUBLIC EDUCATION AND OUTREACH..... 24
11.0 MONITORING PROGRAM..... 25
12.0 PROGRAM REPORTING, EVALUATION, AND REVISION..... 27

List of Tables

Table 3-1. SWMP Departmental Responsibilities 6
Table 3-2. Ordinances Providing Legal Authority..... 9

List of Figures

Figure 2-1. SWMP Program Elements 3
Figure 3-1. SWMP Organizational Chart 5
Figure 3-2. Fiscal Analysis of Capital Expenditures and O&M Costs 7

Appendices

- A Certification of Legal Authority
- B Inventory of Municipal Facilities
- C Schedules for Municipal Maintenance Activities
- D Project Application Form
- E Initial Study Checklist
- F Construction Site Inventory
- G Construction Site Inspection Form
- H Industrial and Commercial Facility Inventory

1.0 EXECUTIVE SUMMARY

This Stormwater Management Plan (SWMP) describes the specific urban runoff management programs and activities that will be implemented to comply with the requirements of the municipal separate storm sewer system (MS4) Permit issued to the Riverside County Permittees by the San Diego Regional Water Quality Control Board (Regional Board) in 2004. This is the third MS4 permit issued by the Regional Board and is referred to as the “Third-term” MS4 Permit. This SWMP addresses the items listed in Attachment D to the Third-term MS4 Permit, providing a description of the programs and activities that the City of Temecula is implementing or plans to implement to comply with the Third-term MS4 Permit and to reduce pollutants in Urban Runoff to the Maximum Extent Practicable (MEP).

In general, this SWMP provides additional detail regarding implementation of the programs described in the Riverside County Drainage Area Management Plan (DAMP). The DAMP describes the overall Urban Runoff management strategies being implemented, or planned to be implemented, by the Permittees in the Santa Ana and Santa Margarita Regions of Riverside County during the 5-year terms of the Third-term MS4 Permit. The DAMP has been prepared to meet the complex Urban Runoff management needs in the Santa Ana and Santa Margarita Regions consistent with the Third-term MS4 Permits. The DAMP reflects the needs and constraints of the Permittees, while meeting the requirements of the Third-term MS4 Permits. The terms and acronyms used in this SWMP are defined in the glossary included in the DAMP.

For purposes of this SWMP, the terms “Watershed Storm Water Management Plan (Watershed SWMP)” and “Standard Urban Stormwater Management Plan (SUSMP)” referenced in the Santa Margarita Region Permit are referred to as the “DAMP” and “Water Quality Management Plan (WQMP),” respectively to be consistent with terminology established and in use by the Permittees.

2.0 INTRODUCTION TO THE CITY OF TEMECULA STORMWATER MANAGEMENT PLAN

2.1 PROGRAM OVERVIEW

The regulatory framework that provides the foundation for the Third-term MS4 Permit, and therefore this SWMP, is described in Riverside County DAMP. This SWMP is a programmatic document developed by the City of Temecula to describe its specific ordinances, plans, policies and procedures necessary to manage Urban Runoff and comply with the Third-term MS4 Permit. This SWMP together with the Riverside County DAMP are the principal documents that comprehensively translate the Third-term MS4 Permit requirements into programs and implementation plans for the City of Temecula. The various program elements of this SWMP are depicted in Figure 2-1.

2.2 DESCRIPTION OF MS4

The major MS4 facilities owned and operated by the City of Temecula and regulated under the Third-term MS4 Permit consist of:

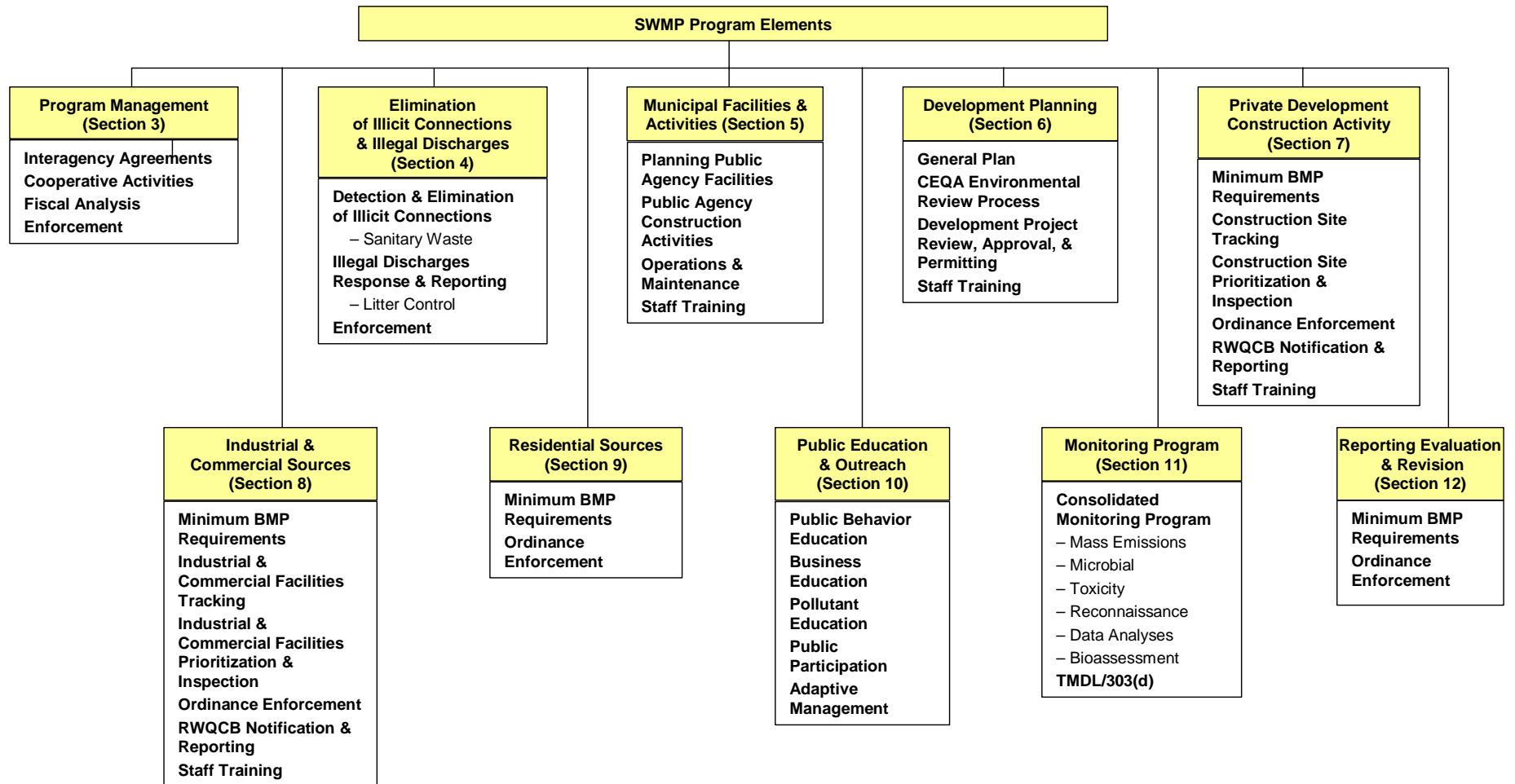
- ◆ 52 miles of city-maintained underground storm drains and
- ◆ 7 miles of improved open channels (excludes undisturbed natural creeks).

The City of Temecula maintains a map of the MS4 facilities that it owns and operates. Each year, the City updates this map and identifies modifications and additions to its major MS4 facilities in the Annual Report to the Regional Board.

Additionally, within the jurisdictional boundaries of the City of Temecula stormwater drainage facilities that are owned and operated by other entities consist of:

- ◆ 2 miles of private ownership underground storm drains (e.g., home owners association) and
- ◆ 22 miles of underground storm drains owned and operated by the Riverside County Flood Control and Water Conservation District.

Figure 2-1. SWMP Program Elements



3.0 PROGRAM MANAGEMENT

3.1 PERMITTEE DEPARTMENTAL RESPONSIBILITIES

There are multiple departments with responsibility to implement elements of this SWMP and to meet the requirements of the Third-term MS4 Permit. An organizational chart depicting the departments and key personnel (position title) with implementation responsibilities is shown in Figure 3-1. Additionally, Table 3-1 is a matrix showing each SWMP element, the departments with implementation responsibilities, the specific responsibilities of each department/organizational unit, and the key personnel by position title.

3.2 WATERSHED AND PERMITTEE COOPERATIVE ACTIVITIES

Interagency agreements and other cooperative activities supporting the implementation of the Third-term MS4 Permit requirements are described in the Riverside County DAMP. Modifications to the interagency agreements and changes in the cooperative activities are described in annual reporting to the Regional Board.

Figure 3-1. SWMP Organizational Chart

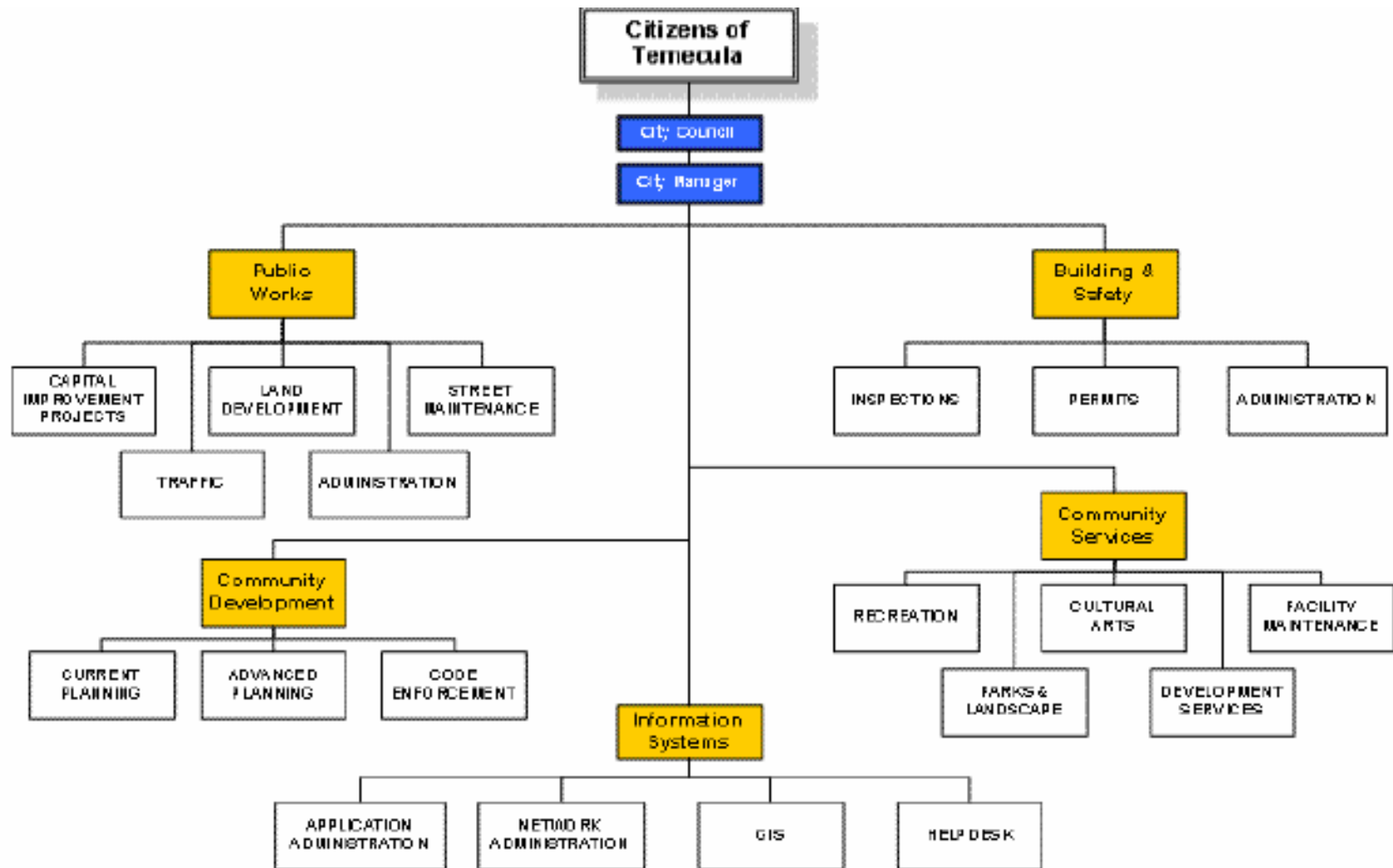


Table 3-1. SWMP Departmental Responsibilities

Program Element	Department(s) or Division(s)	Responsibilities	Key Personnel
Program Management	Land Development (Public Works)	Overall program implementation; permit compliance; data tracking; document production (SWMP, annual reports, etc.); designate minimum BMP requirements; program reporting.	NPDES engineer.
Elimination of Illicit Connections & Illegal Discharges (Sec. J)	Land Development Code Enforcement Information Systems Maintenance	Dry-weather monitoring; responding to complaints regarding illicit connections and illegal discharges; maintenance of the MS4 map; enforcement of ordinances; elimination of illegal discharges and removal of illicit connections.	NPDES engineer. Code Enforcement officer. GIS specialist. Maintenance superintendent.
Municipal Facilities & Activities (Sec. H.1)	Land Development Community Services CIP Maintenance	Maintenance of city-owned infrastructure (ie streets, MS4); Maintenance of landscape and facilities (ie. parks, medians, slopes, recreation facilities, administrative offices); Coordinate annual NPDES training; maintenance of municipal facilities inventory.	NPDES engineer. Recreation superintendent. Principle engineer. Maintenance superintendent.
Development Planning (Sec. F)	Land Development Planning	General Plan review and updates; revisions to the project approval process; CEQA compliance; Conditioning for Approval; Coordinate annual NPDES training; WQMP review and approval.	NPDES engineer. Associate engineer. Principle planner. Associate planner.
Private Construction (Sec. G)	Land Development Building & Safety Code Enforcement	Maintenance of inventory of construction sites; planchecks; Conditioning for Approval; Issuing Grading and Construction Permits; Field Inspections; Coordinate annual NPDES training; enforcement of ordinances.	NPDES engineer. Land Development and Building plancheckers and inspectors. Code Enforcement officers.
Industrial & Commercial Sources (Sec. H.2)	Land Development Code Enforcement Riverside County	Maintenance of Ind/Com facilities list; Coordinate annual NPDES training; field inspections; reporting industrial non-filers; enforcement of ordinances.	NPDES engineer. Code Enforcement officers. Environmental Health and Haz Mat.
Residential Sources (Sec. H.3)	Land Development Code Enforcement	Provide public education to residents regarding minimum BMP requirements; enforcement of ordinances.	NPDES engineer. Code Enforcement officers.
Public Education & Outreach (Sec. E.3 and I)	Riverside County Flood Control District Land Development Community Services	Work with the principle permittee to prepare brochures, posters, and educational materials for the general public; implement recycling programs; attend community outreach events.	Public Education Coordinator. NPDES engineer. Director of Community Services.
Monitoring	Land Development Riverside County Flood Control District	Implement dry-weather monitoring; assist Principle Permittee with wet-weather monitoring.	NPDES engineer. Riverside County Flood Control District.
Program Reporting, Evaluation, and Revision	Land Development	Gather data from applicable departments (Building, Finance, Comm. Services, Code Enforcement, Information Systems, CIP, Maintenance, planning, etc); preparation of annual reports, submittal of information to Principle Permittee.	NPDES engineer.

3.3 FISCAL ANALYSIS

City of Temecula makes capital expenditures and incurs operation and maintenance (O&M) costs to implement this SWMP and to meet the requirements of the Third-term MS4 Permit. Each year the City of Temecula reports its capital expenditures and O&M costs incurred during the preceding fiscal year and the budgeted capital expenditures and O&M costs planned for the next fiscal year in the Annual Report. The form presented in Figure 3-2 is used for reporting the fiscal information.

Figure 3-2. Fiscal Analysis of Capital Expenditures and O&M Costs

Program Element	Fiscal Year 200X-200Y		Fiscal Year 200Y-200Z	
	Capital Expenditures (\$k)	O&M Costs (\$k)	Capital Expenditures (\$k)	O&M Costs (\$k)
Program Management				
Annual Fee for MS4 NPDES Permit				
Implementation Agreement Shared Cost				
Elimination of Illicit Connections & Illegal Discharges				
Municipal Facilities and Activities				
Planning & Constructing Facilities				
MS4 Maintenance				
Development Planning				
Private Development Construction (Inspections)				
Industrial and Commercial Sources (Inspections)				
Public Education & Outreach				
Residential Sources				
Monitoring Program				
Program Reporting, Evaluation, and Revision				
Other				
Total				

This detailed fiscal analysis will be provided each year as part of the Individual Annual Report.

The City of Temecula relies on the following source (or sources) of funds to cover the capital expenditures and the O&M costs associated with implementation of this SWMP and to meet the requirements of the Third-term MS4 Permit.

Source of Funds	Percent of Total Program Funding		Restrictions on Use (if applicable)
	Capital Expenditures	O&M Costs	
County Service Area 152	0% (existing)	0% (existing)	
General Fund/Other Revenues	100% (existing)	100% (existing)	
Fees	50% (proposed)	50% (proposed)	

3.4 LEGAL AUTHORITY

A certification of the City of Temecula's adequate legal authority to comply with 40 CFR 122.26(d)(2)(I)(A-F) and the Third-term MS4 Permit will be provided in Appendix A. *The City of Temecula is finalizing a revised NPDES ordinance to specifically address all of the new requirements outlined in the new permit. A certification of legal authority associated with the new ordinance will be available under separate cover upon adoption of the new ordinance in July 2005. The proposed certification will be similar to the current certification, which was provided in the 2003-2004 Annual Report.*

The Urban Runoff management and discharge controls addressed by the City of Temecula's ordinances may be summarized as follows:

- ◆ The disposal of pollutants onto public or private land is prohibited.
- ◆ Construction activities are required to comply with the local storm water ordinance, the applicable erosion and sediment control (grading) ordinance, and minimum BMPs.
- ◆ Priority Development Projects¹ are required to implement BMPs to reduce pollutants to the Maximum Extent Practicable (MEP) and to maintain or reduce downstream erosion and protect stream habitat.
- ◆ Illicit connections to the MS4 are prohibited.
- ◆ Illegal Discharges to the MS4 are prohibited. Illegal discharges are discharges to the MS4 other than those permitted by the Regional Board and those non-stormwater discharges as identified in Section B.2 of the Third-term MS4 Permit and Section 4.1 of this SWMP.
- ◆ Stop work orders, non-monetary penalties, fines, financial security (bonds), and the denial or revocation of permits may be imposed for violation of permit conditions or ordinances.

Table 3-2 lists the ordinances that provide this legal authority. These ordinances can be viewed at <http://ordlink.com/codes/temecula/index.htm>

¹ As defined in Section F.2.b of the Third-term Santa Margarita Region MS4 Permit.

Table 3-2. Ordinances Providing Legal Authority

Ordinance No.	Ordinance Short Title	Provision(s) of Ordinance Addressing Enforcement
8.12.020	Nuisances – Public Nuisances Defined.	1.20 General Penalty – Violation of Municipal Code
8.20.410	Waste Management – Use.	1.20 General Penalty – Violation of Municipal Code
8.20.610	Waste Management – Authorized Dump Sites.	1.20 General Penalty – Violation of Municipal Code
8.20.690	Waste Management – Unlawful Dumping.	1.20 General Penalty – Violation of Municipal Code
8.20.710	Waste Management – Responsibility.	1.20 General Penalty – Violation of Municipal Code
8.28.210	Stormwater/Urban Runoff Management and Discharge – Reduction of Pollutants in Stormwater.	1.20 General Penalty – Violation of Municipal Code
10.16.040	Vehicles and Traffic – Use of Streets for Storage of Vehicles Prohibited.	1.20 General Penalty – Violation of Municipal Code
10.16.050	Vehicles and Traffic – Parking for Certain Purposes Prohibited.	1.20 General Penalty – Violation of Municipal Code
12.04.080	Streets, Sidewalks, and Public Places - Duty to Care for Animals.	1.20 General Penalty – Violation of Municipal Code
12.04.160	Streets, Sidewalks, and Public Places - Water.	1.20 General Penalty – Violation of Municipal Code
12.04.180	Streets, Sidewalks, and Public Places - Waste Liquids and Refuse.	1.20 General Penalty – Violation of Municipal Code
17.32.060	Water Efficient Landscape Design - Landscape Design Requirements.	1.20 General Penalty – Violation of Municipal Code
18.15	Grading, Erosion and Sediment Control – Erosion and Sediment Control.	1.20 General Penalty – Violation of Municipal Code

3.5 ENFORCEMENT

The City of Temecula mandates compliance with its urban runoff related ordinances through implementation of the Enforcement/Compliance Strategy described in Section 3.4.2 of the Riverside County DAMP. City of Temecula staff with responsibility for enforcement receive training as described in Section 3.4.3 of the Riverside County DAMP. Training logs are maintained for purposes of annual reporting to the Regional Board.

As described in the Riverside County DAMP, the City of Temecula has the authority to issue administrative orders and injunctions. Appeal of enforcement actions taken under urban runoff related ordinances are made to the City Council. The court system is used only in those circumstances where criminal prosecution is deemed necessary by the Environmental Crimes Strike Force or the City Attorney/County Counsel.

4.0 ELIMINATION OF ILLICIT CONNECTIONS AND ILLEGAL DISCHARGES

The Riverside County DAMP describes the discharge limitations and prohibitions applicable to the City of Temecula's MS4 (Section 4.1), procedures to be implemented when persistent exceedances of water quality standards are identified (Section 4.2), responding to and reporting illegal discharges (Section 4.4), enforcement measures for illegal discharges and illicit connections (Section 4.5), measures to control litter (Section 4.6), measures to manage sanitary wastes (Section 4.7), and programs to promote collection and proper disposal of hazardous waste (Section 4.8).

The City is finalizing a GIS-based MS4 map to assist locating and eliminating active illicit discharges and illegal connections to the MS4. The map presents all of the city-maintained catch basins, city-maintained storm drains, facilities maintained by Riverside County Flood Control and Caltrans, and existing natural creeks, channels, and canyons. An extensive electronic data base has been developed to accompany the map and includes information specific to each improved storm drain segment and catch basin, including installation date, size, length, material, etc.

IC/ID inspections and reporting are currently a component already included in each of our existing inspection programs throughout construction, commercial, and industrial sites. However, the City also implements a program to actively seek illicit discharges. This program consists of visiting pre-selected observation points throughout Temecula that represent areas down-gradient from commercial, industrial, residential, recreational, and open space areas that have the potential for significant discharges or threats to adjacent receiving waters. These observation points are inspected as per the MS4 permit requirements for visible signs of illegal discharges such as paints, automotive fluids, trash, and other pollutants associated with urban activity. As a result of their locations, NPDES staff may be able to track the visible discharges to the sources. Most of the existing non-stormwater discharges observed to date have been traced to landscape irrigation. Minor miscellaneous non-stormwater discharges consisting of wash water have also been traced to a limited number of drive-thru approaches and patios associated with restaurants and commercial retail stores. The observation points will be reassessed throughout the monitoring period to determine whether they continue to represent paths of potential illicit discharges. An inspection log will also be completed to document the visits and outline any concerns observed. City Code Enforcement officers also routinely canvass the entire city to assist with the NPDES compliance efforts and enforce all of the NPDES-related ordinances.

IC/ID observations are also included during the industrial/commercial facilities inspections and are addressed according to each particular situation encountered. If a responsible party can be identified, outreach and enforcement processes immediately begin. A verbal warning is initially provided to cease all IC/ID operations within a 24-hour time-frame for mitigation. Following the initial contact and verbal warning, a follow-up visit is conducted to determine if compliance goals have been met or are in progress. A formal written warning is issued in the event the responsible party has not met the time-frame to mitigate the IC/ID. An administrative citation may supercede the formal written warning if: 1) discharges have not been discontinued, or 2) compliance efforts are not in progress.

Public Works inspectors also supplement the NPDES IC/ID program by conducting similar inspections at construction sites. These inspectors also assure that illegal connections do not occur during the installation phase of all storm drain lines. Illegal connections are prohibited by the city and are initially verified during the plan check phase. Grading and building permits are not issued until all floor drains, catch basins, and storm drain pipes are approved by Public Works. In addition, Certificates of Occupancy are not issued at the end of the project unless the developers provide the City with videotaped documentation of the new storm drains and connections into existing storm drains. City inspectors are responsible for verifying conformance with the approved plans and permits, and conduct daily inspections throughout all construction sites. Detection of any IC/IDs will cause the inspectors to issue an immediate Stop Work Order and require all construction activities associated with the IC/ID to cease until the IC/ID is addressed.

IC/ID reporting is also conducted through seasonal water sampling and monitoring activities. The Riverside County Flood Control District, serving as the Principal Permittee for the SMR MS4 Permit program, collects wet-season and dry-season water samples throughout Temecula. These samples provide another means by which IC/IDs may be identified. If evidence of an IC/ID is encountered, the District will contact City personnel who, in turn, will notify the responsible party and require immediate mitigation measures.

In addition, the CAP also assists the City's IC/ID elimination efforts through the Stormwater Compliance Surveys completed by EHD and HMM. These surveys list non-compliance issues that require additional attention, including IC/IDs, and are forwarded to the City's NPDES staff for follow-up visits. If IC/IDs are encountered, the City will conduct follow-up site visits to address the non-compliance issues and IC/ID's observed by DEH and HazMat.

The County of Riverside Fire Department and Environmental Health Department are under contract with the City to respond to emergency spills and large discharges involving hazardous materials, hazardous waste, sewage spills, etc. The City is also beginning to coordinate meetings with the local sewer agency to discuss sewer spills, prevention, reporting, and response. Current NPDES brochures direct the public to call the Riverside County Stormwater/Cleanwater Protection Program at 1-800-506-2555 to report activity involving illegal discharges into storm drains. This service provides an initial automated answering message that directs callers to report emergency discharges to the Fire Department by calling 911, and to report sewage spills to EHD at 1-951-955-8982. Although the city maintenance crews have been trained to address non-emergency and smaller discharges, they can also assist other agencies with clean-up efforts. First responders from the City include code enforcement officers and city maintenance crews. Staff from these departments are on-call 24-hours a day, 7-days a week. Non-emergency spills are typically addressed by calling City Hall during business hours at 1-951-694-6411, or by calling the Temecula Police Department at 1-951- 696-3000 during business hours, and 1-800-950-2444 after business hours. In addition, five fire stations are located in Temecula. These stations respond to hazardous materials emergency calls in Temecula year-round.

Additionally, the City of Temecula implements an Illicit Discharge Monitoring Program as described in Section 11 of this SWMP.

An evaluation of the effectiveness of the Illicit Discharge Detection and Elimination component of the SWMP will be included in the Annual Report. The measurable goals addressed in this evaluation will include:

- ◆ Number of illicit discharges, connections and spills reported and/or identified during the reporting period.
- ◆ Number of illicit discharges or connections investigated during the reporting period and the outcome of the investigations.
- ◆ Number and type of enforcement actions taken for illicit discharges or connections during the reporting period.
- ◆ Number of times the City's hotline was called during the reporting period, as compared to previous reporting period.
- ◆ Number and location of dry weather monitoring sites that were monitored during the reporting period.

These measurable goals will be considered in an overall assessment of the effectiveness of the Illicit Discharge Detection and Elimination component. The evaluation will include an assessment of the effectiveness of BMPs that have been implemented for municipal facilities and activities. In addition, major accomplishments of the Illicit Discharge Detection and Elimination component and changes to be implemented in the subsequent year to improve the effectiveness of the program will be included in the evaluation. A reporting form for summarizing this evaluation is included in the Riverside County DAMP.

5.0 MUNICIPAL FACILITIES AND ACTIVITIES

5.1 PLANNING PUBLIC AGENCY FACILITIES

City of Temecula will be incorporating the development of a project-specific WQMP into the process of planning, designing, and preparing construction plans and specifications for its public agency Priority Development Projects as of July 1, 2005. The policies and procedures implemented by City of Temecula to ensure that the planning and design of its public agency Priority Development Projects reflect WQMP requirements is the requirement of post-development BMP installation and maintenance through Condition of Approval.

5.2 PUBLIC AGENCY CONSTRUCTION ACTIVITIES

Section 5.2 of the Riverside County DAMP describes how the City of Temecula ensures that its construction projects are in compliance with the latest version of the General Permit for Stormwater Discharges Associated with Construction Activity and the requirements of the Third-term MS4 Permit.

5.3 OPERATION AND MAINTENANCE OF PUBLIC AGENCY FACILITIES

Section 5.3 of the Riverside County DAMP describes the program for operation, maintenance, and inspection of City of Temecula facilities. City of Temecula has modified the “Template Facility Pollution Prevention Plan (PPP)” contained in the Riverside County DAMP to incorporate minimum BMPs for categories of municipal operations (parks, vehicle maintenance, transportation yards, etc). The minimum BMPs will be required, as applicable, at each facility for which the minimum BMPs are applicable.

In general, copies of the PPP will be maintained at each facility. However, the City of Temecula operates many facilities (e.g., parks, trails) that do not maintain onsite staff, maintenance equipment or materials. In these cases, a copy of the PPP for the applicable category of municipal operation will be maintained at the centralized maintenance facility (e.g., corporate yard) corresponding to the operations category or where the maintenance contracts are administered (i.e. City Hall).

An inventory of the City of Temecula municipal facilities is provided in Appendix B. The municipal activities conducted by the City of Temecula include:

- ◆ street sweeping,
- ◆ catch basin cleaning,
- ◆ maintenance of MS4 facilities,
- ◆ landscape maintenance,
- ◆ swimming pool maintenance,
- ◆ operation of corporation yards (vehicle and equipment maintenance, storage, etc.)

Schedules for these maintenance activities are provided in Appendix C.

5.4 FIRE BMPs

Section 5.3 of the Riverside County DAMP describes the measures implemented by the City of Temecula to reduce pollutants entering the MS4 from non-emergency fire fighting flows such as fire training activities and fire hydrant/sprinkler testing or flushing.

5.5 TRAINING FOR MUNICIPAL MAINTENANCE EMPLOYEES

Training of City of Temecula's staff responsible for implementing the municipal maintenance programs is described in Section 5.5 of the Riverside County DAMP.

5.6 ASSESSMENT OF EFFECTIVENESS

An evaluation of the effectiveness of the Municipal component of the SWMP will be included in the Annual Report. The measurable goals addressed in this evaluation will include:

- ◆ Number of inspections conducted at existing facilities.
- ◆ Number and type of enforcement actions related to construction sites.
- ◆ Number of catch basins and inlets that were inspected and the number that were cleaned.
- ◆ Amount and type of debris removed from catch basins, streets and open channels, including an identification of problem areas that generate the most pollutants.
- ◆ Description and number of training efforts conducted during the reporting period for municipal facility operators and/or inspectors, including number trained.

These measurable goals will be considered in an overall assessment of the effectiveness of the Municipal component. The evaluation will include an assessment of the effectiveness of BMPs that have been implemented for municipal facilities and activities. In addition, major accomplishments of the Municipal component and changes to be implemented in the subsequent year to improve the effectiveness of the program will be included in the evaluation. A reporting form for summarizing this evaluation is included in the Riverside County DAMP.

6.0 DEVELOPMENT PLANNING

6.1 INTRODUCTION

Section 6.0 of the Riverside County DAMP describes the development project approval process implemented by the City of Temecula to ensure that urban runoff from new development and redevelopment is reduced to the Maximum Extent Practicable (MEP), that post-development runoff volumes and velocities will be controlled, and that water quality objectives will not be violated by new development and redevelopment projects.

6.2 GENERAL PLAN

6.2.1 General Plan Review and Amendment

Watershed protection principles and objectives for managing Urban Runoff for land development are reflected in the appropriate policies, goals, and objectives of the City of Temecula General Plan. The City of Temecula reviewed its General Plans to ensure that the following principles and policies are properly considered:

- a) Minimize the amount of impervious surfaces and directly connected impervious surfaces areas of development and, where feasible, slow runoff and maximize on-site infiltration of runoff.
- b) Implement pollution prevention methods supplemented by source control and treatment control BMPs. Use small collection strategies located at, or as close as possible to, the source (i.e., the point where water initially meets the ground) to minimize the transport of urban runoff and pollutants offsite and into an MS4.
- c) Preserve, and where possible, create or restore areas that provide important water quality benefits, such as riparian corridors, wetlands, and buffer zones. Encourage land acquisition of such areas.
- d) Limited disturbance of natural water bodies and natural drainage systems caused by development including roads, highways, and bridges.
- e) Prior to making land use decisions, utilize methods available to estimate increases in pollutant loads and flows resulting from projected future development. Require incorporation of appropriate BMPs to mitigate the projected increases in pollutant loads and flows.
- f) Avoid development of areas that are particularly susceptible to erosion and sediment loss; or establish development guidance that identifies these areas and protects them from erosion and sediment loss.
- g) Reduce pollutants associated with vehicles and increasing traffic resulting from development.
- h) Post-development runoff from a site shall not contain pollutant loads that cause or contribute to an exceedance of receiving water quality objectives and which have not been reduced to the MEP.

When the City of Temecula amends elements of its General Plan, the draft General Plan amendments are provided to the Regional Board for comment.

6.3 CEQA ENVIRONMENTAL REVIEW PROCESS

The City of Temecula has reviewed its CEQA processes to ensure that Urban Runoff issues are properly considered and addressed. Where necessary, the processes were revised to consider and mitigate impacts to Urban Runoff quality and Receiving Waters. The City of Temecula specifically considers the following questions/issues during the CEQA process:

- a) Could the proposed project result in increased impervious surfaces and associated increased runoff? Consider water quality parameters such as temperature, dissolved oxygen, turbidity and other typical stormwater pollutants (e.g. heavy metals, pathogens, petroleum derivatives, synthetic organics, sediment, nutrients, oxygen demanding substances, and trash).
- b) Could the proposed project result in significant alteration of receiving water quality during or following construction?
- c) Could the proposed project result in increased impervious surfaces and associated increased runoff?
- d) Could the proposed project create significant adverse environmental impact to drainage patterns due to changes in runoff flow rates or volumes?
- e) Could the proposed project result in increased erosion downstream?
- f) Is the project tributary to an already impaired water body, as listed on the CWA section 303(d) list? If so, can it result in an increase in any pollutant for which the water body is already impaired?
- g) Is the project tributary to other environmentally sensitive areas? If so, can it exacerbate already existing sensitive conditions?
- h) Could the proposed project have a potentially significant environmental impact on surface water quality of marine, fresh, or wetland waters?
- i) Could the proposed project have a potentially significant adverse impact on groundwater quality?
- j) Could the proposed project cause or contribute to an exceedance of applicable surface or groundwater receiving water quality objectives or degradation of beneficial uses?
- k) Can the project impact aquatic, wetland, or riparian habitat?

These Urban Runoff pollution issues are considered in the Initial Study process (project application form and checklist) and in the preparation and reviews of environmental documents as discussed in the subsections that follow. These questions/guidance are provided to:

- ◆ Environmental planning staff for use in preparing and reviewing CEQA documents for internal city/county projects and when reviewing CEQA documents prepared by the private sector
- ◆ Consultants and other members of the private sector for use in preparing CEQA documents
- ◆ Project applicants during the CEQA preliminary review process
- ◆ Participants attending training related to the requirements of the Third-term MS4 Permit, the DAMP, or the WQMP.

Project Application Form

The City of Temecula utilizes the project application form that will be contained in Appendix D in the environmental review process. *Currently, all planning applications for new development projects and*

modifications to existing developments (significant redevelopment) are in the process of being revised to include the submittal of a WQMP. The revised applications will be available as of July 1, 2005.

Initial Study Checklist

The City of Temecula utilizes the Initial Study Checklist that contains a customized section on hydrology and water quality. A copy of the hydrology and water quality portion of the Initial Study Checklist is contained in Appendix E.

6.4 DEVELOPMENT PROJECT REVIEW, APPROVAL, AND PERMITTING

For all Priority Development Projects that do not have Conditions of Approval or Tentative Tract, Subdivision, or Parcel map approval by July 13, 2005, the project applicant is required to prepare a project-specific WQMP that is in conformance with the Riverside County Water Quality Management Plan for Urban Runoff, which is Appendix O of the Riverside County DAMP. The primary objective of the WQMP, through application of Site Design, Source Control, and Treatment Control BMPs on a project-specific basis, is to ensure that the land use approval and permitting process will minimize the impact of Urban Runoff. The ordinance that provides the City of Temecula the authority to implement and enforce the WQMP is discussed in Section 3.4 of this SWMP. The policies and procedures for project review, approval, permitting, and permit close-out are described in Section 6.4 of the Riverside County DAMP.

6.5 TRAINING

The educational program for developers and contractors and training of municipal staff is described in Section 6.5 of the Riverside County DAMP.

6.6 ASSESSMENT OF EFFECTIVENESS

An evaluation of the effectiveness of the Development Planning component of the SWMP will be included in the Annual Report. The measurable goals addressed in this evaluation will include:

- ◆ Number of developments conditioned to meet WQMP requirements;
- ◆ Amount of training conducted during the reporting period, including number of staff trained;

These measurable goals will be considered in an overall assessment of the effectiveness of the Development Planning component. In addition, major accomplishments of the Development Planning component changes to be implemented in the subsequent year to improve the effectiveness of the program will be included in the evaluation. A reporting form for summarizing this evaluation is included in the Riverside County DAMP.

7.0 PRIVATE DEVELOPMENT CONSTRUCTION ACTIVITY

The Riverside County DAMP describes pollution prevention measures and construction site BMPs (Section 7.1), development of a construction site inventory/database (Section 7.2), procedures for construction site inspections (Section 7.3) and enforcement (Section 7.4), notification of the Regional Board (Section 7.5), annual reporting requirements (Section 7.6), training of municipal staff (Section 7.7) and education/outreach regarding construction activities (Section 7.7).

7.1 CONSTRUCTION SITE INVENTORY

An inventory of construction sites within/under the jurisdiction of the City of Temecula is provided in Appendix F. This inventory of construction sites is updated annually prior to the rainy season.

7.2 CONSTRUCTION SITE INSPECTION

When conducting inspections of construction sites the City of Temecula staff utilize the inspection form provided in Appendix G.

7.3 ASSESSMENT OF EFFECTIVENESS

An evaluation of the effectiveness of the Construction component of the SWMP will be included in the Annual Report. The measurable goals addressed in this evaluation will include:

- ◆ Number and type of enforcement actions related to construction sites.
- ◆ Description and number of training efforts conducted during the reporting period, including number and category of persons (staff inspectors, contractors, construction site operators) trained.

These measurable goals will be considered in an overall assessment of the effectiveness of the Construction component. In addition, major accomplishments of the Construction component and changes to be implemented in the subsequent year to improve the effectiveness of the program will be included in the evaluation. A reporting form for summarizing this evaluation is included in the Riverside County DAMP.

8.0 INDUSTRIAL AND COMMERCIAL SOURCES

The Riverside County DAMP describes development of an industrial and commercial facility inventory/database (Section 8.1), prioritization of facilities and inspection frequency (Section 8.3), procedures for facility inspections (Section 8.4), enforcement (Section 8.5), notification of the Regional Board (Section 8.6), reporting requirements (Section 8.7), and training of municipal staff (Section 8.8).

8.1 INDUSTRIAL/COMMERCIAL FACILITY DATABASE

The City of Temecula developed and maintains an inventory/database of industrial and commercial facilities within their jurisdiction. This inventory/database is provided in Appendix H. Maintenance of the facility inventory/database includes regularly updating the inventory/database for information obtained during facility inspections or other sources.

8.2 SMR MINIMUM BMPs FOR INDUSTRIAL/COMMERCIAL FACILITIES

The City of Temecula has designated a set of minimum BMPs for the industrial and commercial facilities within their jurisdiction to reduce the discharge of pollutants to the MEP. The minimum BMPs, all of which are pollution prevention BMPs, are:

- ◆ Good Housekeeping
- ◆ Proper Materials Handling and Storage
- ◆ Proper Waste Handling
- ◆ Preventive Maintenance
- ◆ Spill Prevention and Response Procedures (where applicable)
- ◆ Facility Personnel Training

Through the process of conducting inspections of industrial and commercial facilities, the inspectors have made the facilities aware of these minimum BMPs and additional BMPs (when appropriate) and of the City of Temecula's stormwater/urban runoff ordinance.

As implementation of this SWMP progresses, the need for additional BMPs to specifically address the pollutants causing or contributing to an impairment of Receiving Waters that are included in the 303(d) List or Environmentally Sensitive Areas (ESAs) will be assessed. This assessment will be conducted as part of the overall program effectiveness evaluation described in Section 12.

Where implementation of the minimum BMPs and the additional BMPs are identified as being insufficient to achieve compliance with the Third-term Santa Margarita MS4 Permit, the City of Temecula requires the implementation of additional site-specific BMPs.

8.3 ASSESSMENT OF EFFECTIVENESS

An evaluation of the effectiveness of the Industrial and Commercial Sources component of the SWMP will be included in the Annual Report. The measurable goals addressed in this evaluation will include:

- ◆ Number of inspections conducted.
- ◆ Number and type of enforcement actions taken.

These measurable goals will be considered in an overall assessment of the effectiveness of the Industrial and Commercial Sources component. In addition, major accomplishments of the Industrial and Commercial Sources component and changes to be implemented in the subsequent year to improve the effectiveness of the program will be included in the evaluation. A reporting form for summarizing this evaluation is included in the Riverside County DAMP.

9.0 RESIDENTIAL SOURCES

9.1 HIGH PRIORITY RESIDENTIAL ACTIVITIES

The City of Temecula has identified the high priority residential activities that it believes may be contributing a significant pollutant load to its MS4. The residential activities that have been identified as high priority in the City of Temecula are:

- ◆ Automobile repair and maintenance
- ◆ Automobile washing
- ◆ Home and garden care activities and product use (pesticides, herbicides, and fertilizers)

9.2 MINIMUM BMPs FOR RESIDENTIAL ACTIVITIES

The City of Temecula has designated a set of minimum BMPs for residential activities within their jurisdiction to reduce the discharge of pollutants to the MEP. The minimum BMPs, all of which are pollution prevention BMPs, are:

- ◆ Proper maintenance of irrigation systems
- ◆ Proper pool maintenance
- ◆ Pick-up and proper disposal of pet waste
- ◆ Proper use and disposal of home and garden products
- ◆ Proper disposal of green waste
- ◆ Proper disposal of household hazardous waste
- ◆ Proper automobile and home maintenance

Through public education and outreach the City of Temecula has notified the residents of the minimum BMPs and additional BMPs (when appropriate) and of its stormwater/urban runoff ordinance.

As implementation of this SWMP progresses, the need for additional BMPs to specifically address the pollutants causing or contributing to an impairment of Receiving Waters that are included in the 303(d) List or Environmentally Sensitive Areas (ESAs) will be assessed. This assessment will be conducted as part of the overall program effectiveness evaluation described in Section 12.

9.3 ENFORCEMENT

Enforcement of the City of Temecula's storm water ordinance (including the prohibition of non-exempt non-stormwater discharges) is described in Section 3.4 of the Riverside County DAMP.

9.4 ASSESSMENT OF EFFECTIVENESS

An evaluation of the effectiveness of the Residential Sources component of the SWMP will be included in the Annual Report. The measurable goals addressed in this evaluation will include:

- ◆ Number and type of enforcement actions taken; and
- ◆ Number and type of internal and external education and outreach activities.

These measurable goals will be considered in an overall assessment of the effectiveness of the Residential Sources component. In addition, major accomplishments of the Residential Sources component and changes to be implemented in the subsequent year to improve the effectiveness of the program will be included in the evaluation. A reporting form for summarizing this evaluation is included in the Riverside County DAMP.

10.0 PUBLIC EDUCATION AND OUTREACH

The City of Temecula implements the public education and outreach program described in the Riverside County DAMP, which addresses the requirements of the Third-term MS4 Permit (Section 10.2), the objectives of the public education and outreach program (Section 10.3), implementation of the program (Section 10.4), and the specific components of the program, including public participation (Section 10.5).

The City of Temecula also conducts the following public education and outreach activities:

- ◆ Stormwater management program information and links are provided on the City's website located at http://www.cityoftemecula.org/cityhall/pub_works/landDev/npdes.htm
- ◆ Inspectors distribute educational brochures generated by RCFCD during construction site inspections and industrial/commercial facility inspections.
- ◆ Education materials are available at the Public Works reception counter.
- ◆ NPDES brochures are available at local weekend events.

An evaluation of the effectiveness of the Public Education and Outreach component of the SWMP will be included in the Annual Report. The measurable goals addressed in this evaluation will include the number of:

- ◆ Permittee employees trained
- ◆ Construction outreach events conducted
- ◆ Industrial/Commercial outreach events conducted
- ◆ Media impressions
- ◆ Classroom presentations
- ◆ Public education events conducted

These measurable goals will be considered in an overall assessment of the effectiveness of the Public Education and Outreach component. In addition, major accomplishments of the Public Education and Outreach component and changes to be implemented in the subsequent year to improve the effectiveness of the program will be included in the evaluation. A reporting form for summarizing this evaluation is included in the Riverside County DAMP.

11.0 MONITORING PROGRAM

The Consolidated Program for Water Quality Monitoring is described in Section 11 of the Riverside County DAMP.

Additionally, the City of Temecula developed and implements an Illicit Discharge Monitoring Program, for its own MS4. The following stations have been identified as illicit discharge (dry weather) monitoring stations:

- ◆ Empire Creek at Del Rio bridge
- ◆ Pechanga Creek at the confluence of Pechanga and Temecula Creeks
- ◆ Stormdrain channel west of Canterfield
- ◆ Temecula Creek ant the end of Pechanga Drive

These stations are monitored (inspected) at least twice a year between May 1st and September 30th. For each of these stations, the City of Temecula records the following information:

- ◆ Time (days) since last rain event
- ◆ Total rainfall (inches) for last rain event
- ◆ Physical description of station/conveyance (e.g., 24-inch RCP)
- ◆ Predominant land uses of station's drainage area
- ◆ Estimation of flow, if any:
- ◆ Observations (odor, color, deposits, staining, etching, stressed vegetation, etc.)

The City of Temecula will utilize the field reporting form developed as part of the Consolidated Program for Water Quality Monitoring (Section 12 of the Riverside County DAMP).

If flow or accumulated water is observed and more than 72 hours have past since the last rain event, field screening analysis is conducted for specific conductance, turbidity, pH, temperature, and dissolved oxygen. Additionally, if the field screening analysis indicates the potential for an illicit connection or illegal discharge and there is adequate flow or accumulated water, samples will be collected² and submitted to a water quality analytical laboratory. The samples will be analyzed for the following constituents: total hardness, oil & grease, ammonia nitrogen, nitrate nitrogen, total phosphorus, total and dissolved copper, surfactants (MBAs), diazinon, chlorpyrifos, dissolved lead, E. coli, total coliform, and fecal coliform.

Analytical results (either laboratory or field screening) that exceed the numeric criteria developed as part of the Consolidated Program for Water Quality Monitoring (Section 12 of the Riverside County DAMP)

² Samples will only be collected if there is adequate flow or accumulated water to allow for proper field quality assurance and quality control for sample collection. For example, due to sample preservation requirements, a separate sample must be collected for analysis of Oil & Grease and the sample must be collected without compromising the amount of preservative in the sample bottle.

will trigger further investigation and inspection with the objective of eliminating the illicit connection or illegal discharge.

The City of Temecula summarizes the results of its Illicit Discharge Monitoring Program for each annual report submitted to the Regional Board.

12.0 PROGRAM REPORTING, EVALUATION, AND REVISION

The City of Temecula implements the reporting (Section 12.1), program evaluation (Section 12.2), and program revision elements described in the Riverside County DAMP.

APPENDIX A

Certification of Legal Authority (*Pending*)

APPENDIX B
Inventory of Municipal Facilities

CITY OF TEMECULA INVENTORY OF MUNICIPAL FACILITIES AND ACTIVITIES

NAME	ADDRESS	DESCRIPTION
CORPORATE YARD		
Public Works Maintenance Yard	43200 Business Park Dr	Vehicle parking, limited storage of miscellaneous maintenance supplies, storage of BMPs for Municipal Facilities, etc.
EXISTING PARKS		
Bahia Vista Park	41566 Avenida de la Reina	Barbeque, open grass areas, picnic tables or park benches, tot lot or playground equipment, water fountains.
Butterfield Stage Park	33654 De Portola	Barbeque, open grass areas, picnic tables or park benches, tot lot or playground equipment, water fountains.
Calle Aragon Park	41621 Calle Aragon	Barbeque, open grass areas, picnic tables or park benches, tot lot or playground equipment, water fountains.
Crowne Hill Park	33203 Old Kent Rd	Barbeque, open grass areas, picnic tables or park benches, tot lot or playground equipment, water fountains.
Harveston Community Park	28582 Harveston Dr	Barbeque, open grass areas, picnic tables or park benches, tot lot or playground equipment, water fountains, parking.
John Magee Park	44656 Corte Veranos	Barbeque, open grass areas, picnic tables or park benches, tot lot or playground equipment, water fountains.
Kent Hintergardt Memorial Park	31465 Via Cordoba	Barbeque, open grass areas, picnic tables or park benches, tot lot or playground equipment, water fountains.
Loma Linda Park	30877 Loma Linda Rd	Barbeque, open grass areas, picnic tables or park benches, tot lot or playground equipment, water fountains.
Long Canyon Creek Park	40356 N. General Kearny	Barbeque, open grass areas, picnic tables or park benches, tot lot or playground equipment, water fountains.
Margarita Community Park	29119 Margarita Rd	Barbeque, open grass areas, picnic tables or park benches, tot lot or playground equipment, water fountains.
Meadows Park	43110 Meadows Pky	Barbeque, open grass areas, picnic tables or park benches, tot lot or playground equipment, water fountains.
Nakayama Park	30592 Nicolas Rd	Barbeque, open grass areas, picnic tables or park benches, tot lot or playground equipment, water fountains.
Nicolas Road Park	39955 Nicolas Rd	Barbeque, open grass areas, picnic tables or park benches, tot lot or playground equipment, water fountains.
Pablo Apis Park	33005 Regina	Barbeque, open grass areas, picnic tables or park benches, tot lot or playground equipment, water fountains.

CITY OF TEMECULA INVENTORY OF MUNICIPAL FACILITIES AND ACTIVITIES

NAME	ADDRESS	DESCRIPTION
Pala Community Park	44900 Temecula Ln	Barbeque, open grass areas, picnic tables or park benches, tot lot or playground equipment, water fountains.
Paloma del Sol Park	32099 De Portola	Barbeque, open grass areas, picnic tables or park benches, tot lot or playground equipment, water fountains.
Pauba Ridge Park	33405 Pauba Rd	Barbeque, open grass areas, picnic tables or park benches, tot lot or playground equipment, water fountains.
Redhawk Community Park	44747 Redhawk Parkway	Barbeque, open grass areas, picnic tables or park benches, tot lot or playground equipment, water fountains.
Riverton Park	30950 Riverton Ln	Barbeque, open grass areas, picnic tables or park benches, tot lot or playground equipment, water fountains.
Ronald Reagan Sports Park	42659 Margarita Rd	Barbeque, open grass areas, picnic tables or park benches, tot lot or playground equipment, water fountains, parking.
Rotary Park	28816 Pujol St	Barbeque, open grass areas, picnic tables or park benches, tot lot or playground equipment, water fountains.
Sam Hicks Monument Park	41970 Moreno Rd	Barbeque, open grass areas, picnic tables or park benches, tot lot or playground equipment, water fountains, parking.
Serena Hills Park	40747 Walcott Ln	Barbeque, open grass areas, picnic tables or park benches, tot lot or playground equipment, water fountains.
Stephen Linen Jr. Memorial Park	44935 Nighthawk Pass	Barbeque, open grass areas, picnic tables or park benches, tot lot or playground equipment, water fountains.
Temecula Duck Pond	28250 Ynez Rd	Barbeque, open grass areas, picnic tables or park benches, tot lot or playground equipment, water fountains, parking.
Temecula Middle School	42075 Meadows Parkway	Fields only
Temeku Hills Park	31367 La Serena Wy	Barbeque, open grass areas, picnic tables or park benches, tot lot or playground equipment, water fountains.
Vail Ranch Park	32965 Harmony Ln	Barbeque, open grass areas, picnic tables or park benches, tot lot or playground equipment, water fountains.
Veterans Park	30965 La Serena Wy	Barbeque, open grass areas, picnic tables or park benches, tot lot or playground equipment, water fountains.
Voorburg Park	39960 Nicolas Rd	Barbeque, open grass areas, picnic tables or park benches, tot lot or playground equipment, water fountains.
Winchester Creek Park	39950 Margarita Rd	Barbeque, open grass areas, picnic tables or park benches, tot lot or playground equipment, water fountains.

CITY OF TEMECULA INVENTORY OF MUNICIPAL FACILITIES AND ACTIVITIES

NAME	ADDRESS	DESCRIPTION
		Barbeque, open grass areas, picnic tables or park benches, tot lot or playground equipment, water fountains.
RECREATIONAL FACILITIES		
Chaparral High School	27215 Nicolas Road	Pool
Community Recreation Center	30875 Rancho Vista Rd	Classes, lockers, gymnasium, pool, billiard, meeting rooms, stage, kitchen, amphitheater, parking.
Temecula Skate Park	42659 Margarita Rd	Arena, picnic facilities, restroom, snack bar, equipment rental, parking.
Temecula Elementary School	41951 Moraga Road	Pool
FIRE STATIONS		
Fire Station #84	30650 Pauba Road	Office and parking
Fire Station #92	32364 Overland Trail	Office and parking
POLICE STATION		
Temecula Police Station	28410 Old Town (storefront)	Office and parking
	30755 Auld Road, Murrieta (main station for Temecula)	Offices and parking
OTHER PUBLIC FACILITIES		
Chapel of Memories	28300 Mercedes St	Wedding Chapel (Sam Hicks Monument Park)
City Hall	43200 Business Park Dr	Offices, parking lot
Imagination Workshop	42081 Main St	Children's Museum
Mary Phillips Senior Center	41845 6th St	Classrooms, auditorium, stage, billiards, kitchen, parking lot
Old Town Community Theatre	42051 Main Street	
Temecula Community Center	28816 Pujol Street	Multi-purpose room, kitchen, class rooms, parking lot
Temecula Valley Museum	28314 Mercedes St	Public Museum (Sam Hicks Monument Park)

APPENDIX C

Schedules for Municipal Maintenance Activities

COPY

MEMORANDUM



TO: Bill Hughes, Director of Public Works/City Engineer

FROM: *Bob* Brad Buron, Maintenance Superintendent

DATE: May 3, 2005

SUBJECT: Monthly Activity Report - April, 2005

The following activities were performed by Public Works Department, Street Maintenance Division in-house personnel for the month of **April, 2005:**

I. SIGNS		
A.	Total signs replaced	<u>158</u>
B.	Total signs installed	<u>10</u>
C.	Total signs repaired	<u>27</u>
II. TREES		
A.	Total trees trimmed for sight distance and street sweeping concerns	<u>5</u>
III. ASPHALT REPAIRS		
A.	Total square feet of A. C. repairs	<u>7,047</u>
B.	Total Tons	<u>52</u>
IV. CATCH BASINS		
A.	Total catch basins cleaned	<u>178</u>
V. RIGHT-OF-WAY WEED ABATEMENT		
A.	Total square footage for right-of-way abatement	<u>0</u>
VI. GRAFFITI REMOVAL		
A.	Total locations	<u>17</u>
B.	Total S.F.	<u>2,505</u>
VII. STENCILING		
A.	<u>7</u> New and repainted legends	
B.	<u>11,792</u> L.F. of new and repainted red curb and striping	

CITY CREW MAINTENANCE SCHEDULE

5-16-05 MONDAY	5-17-05 TUESDAY
<p>① CITY WIDE CATCH BASIN HOT SPOTS - REMOVE DEBRIS FROM MOUTH OF CATCH BASINS.</p> <p>② AREA 1 - INSPECT AND CLEAN CATCH BASINS. SECURE CATCH BASIN LIDS. INSPECT CATCH BASIN LID FOR ONLY RAIN IN THE DRAIN AND REPLACE IF DAMAGED.</p>	<p>① AREA 1 - INSPECT AND CLEAN CATCH BASINS. SECURE CATCH BASIN LIDS. INSPECT CATCH BASIN LID FOR ONLY RAIN IN THE DRAIN AND REPLACE IF DAMAGED.</p>
5-18-05 WEDNESDAY	5-19-05 THURSDAY
<p>① AREA 1 - INSPECT AND CLEAN CATCH BASINS. SECURE CATCH BASIN LIDS. INSPECT CATCH BASIN LID FOR ONLY RAIN IN THE DRAIN AND REPLACE IF DAMAGED.</p>	<p>① AREA 1 - INSPECT AND CLEAN CATCH BASINS. SECURE CATCH BASIN LIDS. INSPECT CATCH BASIN LID FOR ONLY RAIN IN THE DRAIN AND REPLACE IF DAMAGED.</p>
<p>Crew Reminders:</p> <ol style="list-style-type: none"> 1. Safety first. 2. Split crew. Do your paperwork. 3. Paperwork needs to have quantities, time, locations. 4. When uncertain of a project, ask questions. 5. Any personnel questions, "open door policy", Brad, Bill, Human Resources. 6. Continue with your "Can Do Attitude". <p>Thank you for the good job. Brad</p>	5-20-05 FRIDAY <p>① AREA 1 - INSPECT AND CLEAN CATCH BASINS. SECURE CATCH BASIN LIDS. INSPECT CATCH BASIN LID FOR ONLY RAIN IN THE DRAIN AND REPLACE IF DAMAGED.</p>

APPENDIX D

Project Application Form

(Under Revision – Available July 1, 2005)

APPENDIX E
Initial Study Checklist
Section 8: Hydrology and Water Quality

8. HYDROLOGY AND WATER QUALITY. Would the project:

	Issues and Supporting Information Sources	Potentially Significant Impact	Potentially Significant Unless Mitigation Incorporated	Less Than Significant Impact	No Impact
a.	Violate any water quality standards or waste discharge requirements or otherwise substantially degrade water quality?				
b.	Substantially deplete groundwater supplies or interfere substantially with groundwater recharge such that there would be a net deficit in aquifer volume or a lowering of the local groundwater table level (e.g., the production rate of pre-existing nearby wells would drop to a level which would not support existing land uses or planned uses for which permits have been granted)?				
c.	Substantially alter the existing drainage pattern of the site or area, including through the alteration of the course of a stream or river, in a manner which would result in substantial erosion or siltation on- or off-site?				
d.	Substantially alter the existing drainage pattern of the site or area, including through the alteration of the course of a stream or river, or substantially increase the rate or amount of surface runoff in a manner which would result in flooding on- or off-site?				
e.	Create or contribute runoff water which would exceed the capacity of existing or planned storm water drainage systems or provide substantial additional sources of polluted runoff?				
f.	Require the preparation of a Water Quality Management Plan?				
g.	Place housing within a 100-year flood hazard area as mapped on a federal Flood Hazard Boundary or Flood Insurance Rate Map or other flood hazard delineation map?				
h.	Place within a 100-year flood hazard area structures which would impede or redirect flood flows?				
i.	Expose people or structures to a significant risk of loss, injury or death involving flooding, including flooding as a result of the failure of a levee or dam?				
j.	Inundation by seiche, tsunami, or mudflow?				

APPENDIX F
Construction Site Inventory



CITY OF TEMECULA

Land Development Activity Report

Reporting Period 7/1/2004 through 5/1/2005

Activity	Type of Plan	Status	Address	Description	Plan Checker
LD04-150CO	LD_CONST	BORE_V	ISSUED	EXCAVATE TWO GEOTECH 8" BORINGS ON MAIN ST BRIDGE	SMC
LD04-154CO	LD_CONST	STR	ISSUED	JEFFERSON AVE REHAB PHASE 2 - CIP PROJECT PW02-26	SC
LD04-161CO	LD_CONST	MISC	ISSUED	HAUL ROUTE PERMIT	SC
LD04-171CO	LD_CONST	MISC	ISSUED	HAUL ROUTE PERMIT	SC
LD04-194CO	LD_CONST	TRFS&S	ISSUED	INSTALL REVISED STRIPING ON MARGARITA RD W/O MORAG	SC
LD04-195CO	LD_CONST	MISC	ISSUED	INSTALL TEMPORARY POWER	SC
LD04-219CO	LD_CONST	MISC	ISSUED	CITY WIDE CONCRETE SIDEWALK REPAIRS FY2003-04	SC
LD04-256CO	LD_CONST	MISC	ISSUED	HAUL ROUTE PERMIT	SC
LD04-276CO	LD_CONST	MISC	ISSUED	INSTALL FLOW MONITOR AND SEWER SAMPLE ONE MANHOLE	SC
LD04-282CO	LD_CONST	TRFSGNL	ISSUED	INSTALL TWO TRAFFIC SIGNALS - CIP PROJECT	SC
LD05-033CO	LD_CONST	MISC	ISSUED	INSTALL 2-4" IRRIGATION MAINLINE	SC
LD05-048CO	LD_CONST	TRFSGNL	ISSUED	CONSTRUCT TRAFFIC SIGNAL AND STRIPING MODIFICATION	SC
LD05-104CO	LD_CONST	MISC	ISSUED	TWO TEMP. POWER POLE CROSSINGS AT TRACT MAP 29798-8. FROM LO	CV
LD03-279CO	LD_CONST	STR	ISSUED	12887 MAP VOLUNTARY SANTIAGO ROAD STREET IMPROVEMENTS	RJ
LD04-025CO	LD_CONST	STR	ISSUED	13089 MAP CALLE CEDRAL & CALLE CEREZO	RJ
LD04-234CO	LD_CONST	STR	ISSUED	19582 MAP WINCHESTER RD WIDENING PROJECT PW00-27	SC
LD04-175CO	LD_CONST	MISC	ISSUED	23143 MAP INSTALL 12 CURB CORES AT SAGE COURT - CROWNE HILL	SC
LD04-217CO	LD_CONST	MISC	ISSUED	23143 MAP 1 53 CURB CORES	CV
LD04-218CO	LD_CONST	MISC	ISSUED	23143 MAP 11 29 CURB CORES	CV
LD01-110CO	LD_CONST	STR	ISSUED	23143 MAP 8 TR 23143-8 STREET IMPROVEMENT PLANS	SC
LD04-143CO	LD_CONST	TRFS&S	ISSUED	23172 MAP HWY 79-SOUTH @ APIS/MEADOWS PKY (COUNTY PP#1843)	SC
LD03-258CO	LD_CONST	STR	ISSUED	23209 MAP LA SERENA WIDENING w/ ROUGH GRADING & EROSION CTRL	CW
LD05-094CO	LD_CONST	BORING	ISSUED	23354 MAP BORE 3 SAMPLE HOLES TO 40 FEET AT YNEZ AND SOLANA	SC

Activity	Type of Plan	Status	Address	Description	Plan Checker	
LD05-020CO	LD_CONST	MISC	ISSUED	23513 MAP	HAUL ROUTE PERMIT - TM23513 TO WOLFCREEK DEVELOPMENT	SC
LD04-123CO	LD_CONST	PERM	ISSUED	24991 MAP	HAUL ROUTE PERMIT - RCWD SITE - DIAZ RD N/O CHERRY	SMC
LD03-044CO	LD_CONST	STR	ISSUED	25004 MAP	STREET IMPROVEMENT PLAN	JP
LD04-267CO	LD_CONST	MISC	ISSUED	25004 MAP	HAUL ROUTE PERMIT	SC
LD04-309CO	LD_CONST	MISC	ISSUED	25004 MAP	TEMPORARY POWER POLE CROSSING	RM
LD05-071CO	LD_CONST	MISC	ISSUED	25004 MAP	INSTALL TWO TEMPORARY POWER POLES	SC
LD04-212CO	LD_CONST	MISC	ISSUED	26690 YNEZ RD	INSTALL WATER, SEWER, FIRE CONNECTIONS & DRIVEWAY	SC
LD04-172CO	LD_CONST	MISC	ISSUED	26941 MAP	HAUL ROUTE PERMIT	SC
LD04-322CO	LD_CONST	MISC	ISSUED	27270 MADISON AV	INSTALL TELEPHONE CONDUIT SERVICE CONNECTION	SC
LD04-167CO	LD_CONST	BORING	ISSUED	27987 MAP 1	SAMPLE WELL MW14A AT W/S OF REDHAWK PKWY S/O 79S	SC
LD04-208CO	LD_CONST	MISC	ISSUED	28545 OLD TOWN FRONT ST	INSTALL SEWER AND WATER TIE-INS FOR COMM. THEATER	SC
LD05-053CO	LD_CONST	MISC	ISSUED	28915 VALLEJO AV	INSTALL THREE TEMP POWER POLES	SC
LD04-206CO	LD_CONST	MISC	ISSUED	29085 VIA NORTE	REMOVE AND REPLACE CONCRETE DRIVEWAY	SC
LD04-158CO	LD_CONST	MISC	ISSUED	29240 TOWNSHIP RD	TEMP POWER CROSSING OVER TOWNSHIP ROAD AT HARVESTON AS SH	SC
LD05-069CO	LD_CONST	MISC	ISSUED	29255 PROVIDENCE RD	2 -3" CURB CORES	CV
LD04-170CO	LD_CONST	MISC	ISSUED	29275 SANTIAGO RD	HAUL ROUTE PERMIT	SC
LD04-120CO	LD_CONST	WTR	ISSUED	29305 MAP	WOLF VALLEY ROAD (NORTH OF WALLABY)	CW
LD04-157CO	LD_CONST	MISC	ISSUED	29305 MAP	HAUL ROUTE PERMIT FROM VINCENT MORAGA TO WOLF CRK	
LD04-277CO	LD_CONST	MISC	ISSUED	29305 MAP	INSTALL TWO DRIVEWAYS AT N/S OF DEER HOLLOW	SC
LD04-279CO	LD_CONST	MISC	ISSUED	29305 MAP	HAUL ROUTE PERMIT	SC
LD04-299CO	LD_CONST	MISC	ISSUED	29305 MAP	HAUL ROUTE PERMIT	SC
LD00-126CO	LD_CONST	STR&SD	ISSUED	29305 MAP 1	WOLF VALLEY ROAD IMPROVEMENTS	CW
LD03-166CO	LD_CONST	TRFSGNL	ISSUED	29305 MAP 1	TRAFFIC SIGNAL, SIGNING & STRIPING PLANS	CW
LD04-104CO	LD_CONST	REV	ISSUED	29305 MAP 1	WOLF CREEK DR NORTH / LOMA LINDA / CHANNEL IMP (AddSht.6of6)	CW
LD02-207CO	LD_CONST	SWR&WT	ISSUED	29353 MAP	SEWER & WATER IMPROVEMENTS	JP
LD02-208CO	LD_CONST	STR&SD	ISSUED	29353 MAP	STREET, STRIPING & STORM DRAIN IMPROVEMENTS	JP
LD04-051CO	LD_CONST	IMPR	ISSUED	29639 MAP	YNEZ RD BRIDGE WIDENING OVER SANTA GERTRUDIS CREEK -	SMC

Activity	Type of Plan	Status	Address	Description	Plan Checker	
LD04-298CO	LD_CONST	MISC	ISSUED	29639 MAP	HAUL ROUTE PERMIT	SC
LD04-317CO	LD_CONST	MISC	ISSUED	29639 MAP	PERMIT IS FOR THE MEDIAN AND PARKWAY MONUMENTS PREVIOUSLY I	SC
LD04-321CO	LD_CONST	MISC	ISSUED	29639 MAP	*****02/09/05 - REVISION TO HAUL ROUTE - YNEZ RD SOUTH TO W	SC
LD04-004CO	LD_CONST	WTR	ISSUED	29639 MAP 2	YNEZ & EQUITY WATER RELOCATION PLAN	CW
LD04-180CO	LD_CONST	MISC	ISSUED	29781 PASADA RD	INSTALL DRIVEWAY APPROACH	SC
LD03-288CO	LD_CONST	STR	ISSUED	29798 MAP	STREET IMPROVEMENTS	CW
LD03-289CO	LD_CONST	SWR&WT	ISSUED	29798 MAP	SEWER & WATER IMPROVEMENTS	CW
LD04-249CO	LD_CONST	MISC	ISSUED	29798 MAP	HAUL ROUTE PERMIT	SC
LD04-303CO	LD_CONST	MISC	ISSUED	29798 MAP	INSTALL TRAFFIC SIGNAL CONDUITS	SC
LD04-307CO	LD_CONST	MISC	ISSUED	29798 MAP	TEMP POWER POLE CROSSING FROM EXISTING TRANSFORMER LOCATE	CV
LD04-318CO	LD_CONST	WTR	ISSUED	29798 MAP	INSTALL WATER LINE	SC
LD05-100CO	LD_CONST	MISC	ISSUED	29798 MAP	HAUL ROUTE PERMIT	SC
LD05-105CO	LD_CONST	MISC	ISSUED	29798 MAP	INSTALL TWO RETAINING WALL DRAIN LINES UNDER S/W	SC
LD04-308CO	LD_CONST	MISC	ISSUED	29798 MAP 3	TEMP POWER POLE CROSSING FROM EXISTING TRANSFORMER LOCATE	CV
LD03-224CO	LD_CONST	STR	ISSUED	29798 MAP 4	STREET w/ SEWER & WATER IMPROVEMENTS	CW
LD03-225CO	LD_CONST	SD	ISSUED	29798 MAP 4	STORM DRAIN IMPROVEMENTS	CW
LD04-168CO	LD_CONST	MISC	ISSUED	29798 MAP 5	TEMPORARY POWERPOLE CROSSINGS AT TRACT 29798-5. THREE 200 A	CV
LD03-216CO	LD_CONST	STR	ISSUED	29798 MAP 6	STREET w/ SEWER & WATER IMPROVEMENTS	CW
LD03-189CO	LD_CONST	STR	ISSUED	29798 MAP 8	STREET w/ SEWER & WATER IMPROVEMENTS	CW
LD04-311CO	LD_CONST	MISC	ISSUED	29798 MAP 8	INSTALL TWO (2) CURB CORES @ EACH LOT PER STD 303	RM
LD03-253CO	LD_CONST	STR	ISSUED	29798 MAP 9	STREET w/ SEWER & WATER IMPROVEMENTS	CW
LD05-049CO	LD_CONST	MISC	ISSUED	29961 VIA NORTE	INSTALL TWO DRIVEWAY APPROACHES PER STD. NO. 207	SC
LD04-014CO	LD_CONST	IMPR	ISSUED	30180 MAP	HWY 79S STREET LIGHT & SIDEWALK IMPROVEMENTS & 3 DRIVEWAYS.	KH
LD04-189CO	LD_CONST	MISC	ISSUED	30180 MAP	INSTALL DRIVEWAY APPROACH PER LD03-291GR PRECISE GRADING PLA	SC
LD05-054CO	LD_CONST	STR	ISSUED	30180 MAP	INSTALL MODIFIED DRIVEWAY 207A - LOT 14 OF PM30180	SC
LD05-070CO	LD_CONST	MISC	ISSUED	30180 MAP	INSTALL IRRIGATION AND LANDSCAPING IMPROVEMENTS	SC
LD04-160CO	LD_CONST	MISC	ISSUED	30215 VIA NORTE	INSTALL DRIVEWAY APPROACH	SC

Activity	Type of Plan	Status	Address	Description	Plan Checker	
LD03-041CO	LD_CONST	STR	ISSUED	30312 MAP	COUNTY STREET & STREET LIGHT IMPROVEMENTS	CW
LD03-048CO	LD_CONST	SD	ISSUED	30468 MAP	STORM DRAIN IMPROVEMENTS	CW
LD05-109CO	LD_CONST	MISC	ISSUED	30667 MAP	INSTALL TEMP POWER POLES AND WIRE CROSSING	SC
LD04-296CO	LD_CONST	MISC	ISSUED	30668 MAP	TEMPORARY POWER POLE CROSSINGS	RM
LD04-183CO	LD_CONST	MISC	ISSUED	30668 MAP 2	TEMPORARY POWER POLE CROSSING	RM
LD04-192CO	LD_CONST	MISC	ISSUED	30669 MAP	INSTALL FENCE PILASTERS ENCROACHING INTO R.O.W AT	SC
LD04-231CO	LD_CONST	MISC	ISSUED	30757 JEDEDIAH SMITH RD	HAUL ROUTE PERMIT - EXPORT	SC
LD02-221CO	LD_CONST	SD	ISSUED	30797 MAP	STORM DRAIN IMPROVEMENTS	JP
LD02-223CO	LD_CONST	IMPR	ISSUED	30798 MAP	SIDEWALK & STREET LIGHT PLAN	CW
LD02-224CO	LD_CONST	SD	ISSUED	30798 MAP	STORM DRAIN IMPROVEMENTS	CW
LD04-289CO	LD_CONST	MISC	ISSUED	30867 DEL REY RD	INSTALL DRIVEWAY APPROACH	SC
LD04-151CO	LD_CONST	PERM	ISSUED	30990 VIA NORTE	INSTALL SPLIT-RAIL STYLE FENCE 2 FEET BEHIND CURB. ALL REQUIREME	SMC
LD03-251CO	LD_CONST	STR&SD	ISSUED	31143 NICOLAS RD	PORTION OF PARCEL 29 NICOLAS RD & CALLE MEDUSA	RJ
LD05-019CO	LD_CONST	MISC	ISSUED	31217 KAHWEA RD	INSTALL DRIVEWAY APPROACH PER STD 207	SC
LD04-162CO	LD_CONST	STR&SD	ISSUED	31276 MAP	STREET A, B, C, D & E	KH
LD04-173CO	LD_CONST	SWR&WT	ISSUED	31276 MAP	BRISTOL RD/ASHVILLE LN/LAUREL LN/SOMERVILLE LN	KH
LD05-067CO	LD_CONST	MISC	ISSUED	31276 MAP	TEMPORARY POWER POLE CROSSING	RM
LD04-315CO	LD_CONST	MISC	ISSUED	31621 DEER HOLLOW WY	TEMPORARY POWER POLE CROSSING	RM
LD04-235CO	LD_CONST	SD	ISSUED	31898 MAP	LINE "A" & LINE "B"	CV
LD04-304CO	LD_CONST	MISC	ISSUED	31898 MAP	TEMP POWER POLE CROSSING FROM 200 AMP METER POLE AT 31659 WO	CV
LD05-028CO	LD_CONST	MISC	ISSUED	31898 MAP	INSTALL DRIVEWAY APPROACHE AND CURB DRAIN/CORE	SC
LD05-032CO	LD_CONST	MISC	ISSUED	31951 CALLE CABALLOS	INSTALL ONE (1) CURB CORE	RM
LD04-239CO	LD_CONST	SD	ISSUED	32169 MAP	CONDOS PHASE 2 PRIVATE STORM DRAIN IMPROVEMENTS	RJ
LD04-271CO	LD_CONST	MISC	ISSUED	32215 WOLF VALLEY RD	TEMP POWER POLE CROSSING FROM METER LOCATED AT 32215 WOLF V	CV
LD04-270CO	LD_CONST	MISC	ISSUED	33017 TOPEKA CT	INSTALL 1-3" CURB CORE	CV
LD04-312CO	LD_CONST	MISC	ISSUED	33057 SAGE CT	INSTALL 4' DRIVEWAY PORTION BEHIND APPROACH	SC
LD04-226CO	LD_CONST	MISC	ISSUED	33062 FOX RD	INSTALL TWO CURB CORES AT CROWNE HILL TR23143-6	SC

Activity	Type of Plan	Status	Address	Description	Plan Checker	
LD01-119CO	LD_CONST	STR	ISSUED	3334 MAP	TRACT MAP 3334 LOT 23	JP
LD02-052CO	LD_CONST	TRFSGNL	ISSUED	3334 MAP	TRAFFIC SIGNAL MODIFICATION RANCHO CAL @ MORAGA RD	JP
LD04-152CO	LD_CONST	PERM	ISSUED	39839 N GENERAL KEARNY RD	WIDEN EXISTING DRIVEWAY	SMC
LD04-264CO	LD_CONST	MISC	ISSUED	40209 CAMINO CAMPOS VERDES	INSTALL PORTION OF DRIVEWAY B/N BACK OF S/W AND PL	SC
LD04-225CO	LD_CONST	MISC	ISSUED	40545 CALLE TORCIDA	INSTALL DRIVEWAY APPROACH PER STANDARD 207A	SC
LD05-027CO	LD_CONST	MISC	ISSUED	40641 CALLE FIESTA	INSTALL STD 207 DRIVEWAY APPROACH.	SC
LD05-026CO	LD_CONST	MISC	ISSUED	40697 CALLE MEDUSA	ENCROACH IN RIGHT OF WAY TO REPAIR SEWER LATERAL AND RESTOR	SC
LD05-099CO	LD_CONST	STR&SD	ISSUED	40810 COUNTY CENTER DR	CONSTRUCT STORM DRAIN MANHOLE AND TIE IN TO SD	
LD04-155CO	LD_CONST	STR	ISSUED	40823 BACCARAT RD	WIDEN EXISTING DRIVEWAY	SC
LD04-156CO	LD_CONST	MISC	ISSUED	40823 BACCARAT RD	WIDEN DRIVEWAY ADDITIONAL 4 FEET	SC
LD04-268CO	LD_CONST	MISC	ISSUED	41645 MARGARITA RD	HAUL ROUTE PERMIT	SC
LD04-223CO	LD_CONST	MISC	ISSUED	42072 5TH ST	INSTALL 6 FOOT HIGH TEMP CL FENCE FOR LD04-173GR	SC
LD04-184CO	LD_CONST	MISC	ISSUED	42115 VANDAMERE CT	INSTALL ONE (1) CURB CORE	RM
LD04-255CO	LD_CONST	MISC	ISSUED	42210 ZEVO DR	TEMP POWER POLE CROSSING OVER ZEVO DRIVE FROM SOUTH TO	SC
LD04-251CO	LD_CONST	MISC	ISSUED	42221 MAIN ST	REMOVE AND REINSTALL CRACKED DRIVEWAY	SC
LD05-087CO	LD_CONST	MISC	ISSUED	42270 WYANDOTTE	INSTALL 5 FOOT DECORATIVE DRIVEWAY BEHIND SIDEWALK	SC
LD04-228CO	LD_CONST	MISC	ISSUED	42310 WINCHESTER RD	HAUL ROUTE PERMIT - OPTI-FORM SITE - EXPORT	SC
LD05-066CO	LD_CONST	MISC	ISSUED	42317 CAMINO ROMO	INSTALL TWO (2) CURB CORES	RM
LD04-201CO	LD_CONST	MISC	ISSUED	42520 RIO NEDO	INSTALL WATER CONNECTIONS & DRIVEWAY PER STD 207A	SC
LD04-310CO	LD_CONST	MISC	ISSUED	42740 JOLLE CT	INSTALL ONE (1) CURB CORE PER STANDARD 303	RM
LD04-153CO	LD_CONST	MISC	ISSUED	43620 RIDGE PARK DR	HAUL ROUTE PERMIT FROM VINCENT MORAGA TO WOLF CRK	SC
LD04-196CO	LD_CONST	MISC	ISSUED	43620 RIDGE PARK DR	INSTALL UTILITY CONNECTIONS AND DRIVEWAY	SC
LD04-269CO	LD_CONST	MISC	ISSUED	43644 EL FARO PL	INSTALL DRIVEWAY APPROACH PER STD. 207 CONSTRUCT ONE RESIDEN	CV
LD04-202CO	LD_CONST	MISC	ISSUED	43941 VIA MONTALBAN	INSTALL CURB CORE PER CITY STANDARD 303.	SC
LD05-103CO	LD_CONST	MISC	ISSUED	44260 REDHAWK PARKWAY	MONITOR GROUNDWATER WELLS	SC
LD05-018CO	LD_CONST	MISC	ISSUED	44526 PALA RD	INSTALL TEMP AC DRIVEWAY APPROACH FOR STRAWBERRY STAND.	SC
LD04-181CO	LD_CONST	MISC	ISSUED	44755 CORTE SANCHEZ	SET CRANE ON STREET TO PLACE FIBERGLASS POOL	SC



CITY OF TEMECULA

Land Development Activity Report

Reporting Period 7/1/2004 through 5/1/2005

Activity	Type of Plan	Status	Address	Description	Plan Checker
LD04-065UT	LD_UTIL	PERM	ISSUED	INSTALL NEW GAS MAIN	JLA
LD04-071UT	LD_UTIL	PERM	ISSUED	JULY 2004 BLANKET PERMIT	RM
LD04-072UT	LD_UTIL	PERM	ISSUED	JULY 2004 BLANKET PERMIT	RM
LD04-073UT	LD_UTIL	PERM	ISSUED	JULY 2004 BLANKET PERMIT	RM
LD04-074UT	LD_UTIL	PERM	ISSUED	JULY 2004 BLANKET PERMIT	RM
LD04-079UT	LD_UTIL		ISSUED	AUGUST 2004 BLANKET PERMIT	RM
LD04-080UT	LD_UTIL		ISSUED	AUGUST 2004 BLANKET PERMIT	RM
LD04-081UT	LD_UTIL		ISSUED	AUGUST 2004 BLANKET PERMIT	RM
LD04-082UT	LD_UTIL		ISSUED	AUGUST 2004 BLANKET PERMIT	RM
LD04-093UT	LD_UTIL		ISSUED	INSTALL WATER SERVICE FOR CORPS IRRIGATION SYSTEM AT MURRIET	SMC
LD04-096UT	LD_UTIL		ISSUED	INSTALL 12,109 LF OF CONDUIT AND HAND HOLDS FOR VERIZON'S FIBE	SMC
LD04-101UT	LD_UTIL		ISSUED	SEPTEMBER 2004 BLANKET PERMIT	RM
LD04-102UT	LD_UTIL		ISSUED	SEPTEMBER 2004 BLANKET PERMIT	RM
LD04-103UT	LD_UTIL		ISSUED	SEPTEMBER 2004 BLANKET PERMIT	RM
LD04-104UT	LD_UTIL		ISSUED	SEPTEMBER 2004 BLANKET PERMIT	RM
LD04-125UT	LD_UTIL		ISSUED	OCTOBER 2004 BLANKET PERMIT	RM
LD04-126UT	LD_UTIL		ISSUED	OCTOBER 2004 BLANKET PERMIT	RM
LD04-127UT	LD_UTIL		ISSUED	OCTOBER 2004 BLANKET PERMIT	RM
LD04-128UT	LD_UTIL		ISSUED	OCTOBER 2004 BLANKET PERMIT	RM
LD04-135UT	LD_UTIL		ISSUED	INSTALL SERVICE ACROSS PECHANGA PKWY S/O HWY 79S	SMC
LD04-143UT	LD_UTIL		ISSUED	INSTALL 90 LF OF CONDUIT TO INSTALL CATV U/G SERVI	SMC
LD04-144UT	LD_UTIL		ISSUED	NOVEMBER 2004 BLANKET PERMIT	SMC
LD04-145UT	LD_UTIL		ISSUED	NOVEMBER 2004 BLANKET PERMIT	SMC

Activity	Type of Plan	Status	Address	Description	Plan Checker
LD04-146UT	LD_UTIL	ISSUED		NOVEMBER 2004 BLANKET PERMIT	SMC
LD04-147UT	LD_UTIL	ISSUED		NOVEMBER 2004 BLANKET PERMIT	SMC
LD04-156UT	LD_UTIL	ISSUED		INSTALL 1" COPPER SERVICE LATERAL - 5' X 6' BELLHO	SMC
LD04-159UT	LD_UTIL	ISSUED		INSTALL 1" COPPER SERVICE LATERAL	SMC
LD04-160UT	LD_UTIL	ISSUED		DECEMBER2004 BLANKET PERMIT	SMC
LD04-161UT	LD_UTIL	ISSUED		DECEMBER 2004 BLANKET PERMIT	SMC
LD04-162UT	LD_UTIL	ISSUED		DECEMBER 2004 BLANKET PERMIT	SMC
LD04-163UT	LD_UTIL	ISSUED		DECEMBER 2004 BLANKET PERMIT	SMC
LD05-001UT	LD_UTIL	ISSUED		2005 ANNUAL BLANKET PERMIT	SMC
LD05-002UT	LD_UTIL	ISSUED		2005 ANNUAL BLANKET PERMIT	SMC
LD05-003UT	LD_UTIL	ISSUED		JANUARY 2005 BLANKET PERMIT	SMC
LD05-004UT	LD_UTIL	ISSUED		JANUARY 2005 BLANKET PERMIT	SMC
LD05-005UT	LD_UTIL	ISSUED		JANUARY 2005 BLANKET PERMIT	SMC
LD05-006UT	LD_UTIL	ISSUED		JANUARY 2005 BLANKET PERMIT	SMC
LD05-010UT	LD_UTIL	ISSUED		INSTALL 475 LF OF 2" MAIN ON S/S OF CORONADO DR	SMC
LD05-019UT	LD_UTIL	ISSUED		FEBRUARY 2005 BLANKET PERMIT	SMC
LD05-020UT	LD_UTIL	ISSUED		FEBRUARY 2005 BLANKET PERMIT	SMC
LD05-021UT	LD_UTIL	ISSUED		FEBRUARY 2005 BLANKET PERMIT	SMC
LD05-022UT	LD_UTIL	ISSUED		FEBRUARY 2005 BLANKET PERMIT	SMC
LD05-023UT	LD_UTIL	ISSUED		EXCAVATE 30' X 16" TRENCH FOR GAS CONNECTION	SMC
LD05-024UT	LD_UTIL	ISSUED		REPAIR 20" RECLAIM WATERLINE	SMC
LD05-025UT	LD_UTIL	ISSUED		INSTALL SEWER MANHOLE AND TWO FLOW METERS	SMC
LD05-036UT	LD_UTIL	ISSUED		MARCH 2005 BLANKET PERMIT	SMC
LD05-037UT	LD_UTIL	ISSUED		MARCH 2005 BLANKET PERMIT	SMC
LD05-038UT	LD_UTIL	ISSUED		MARCH 2005 BLANKET PERMIT	SMC
LD05-039UT	LD_UTIL	ISSUED		MARCH 2005 BLANKET PERMIT	SMC
LD05-045UT	LD_UTIL	ISSUED		POT HOLE FOR DEPTH TO WATER LINE	SMC

Activity	Type of Plan	Status	Address	Description	Plan Checker
LD05-046UT	LD_UTIL	ISSUED		APRIL 2005 BLANKET PERMIT	SMC
LD05-047UT	LD_UTIL	ISSUED		APRIL 2005 BLANKET PERMIT	SMC
LD05-048UT	LD_UTIL	ISSUED		APRIL 2005 BLANKET PERMIT	SMC
LD05-049UT	LD_UTIL	ISSUED		APRIL 2005 BLANKET PERMIT	SMC
LD05-050UT	LD_UTIL	ISSUED		INSTALL 2,182 LF OF 4 - 5" PVC CONDUITS & 1 VAULT	SMC
LD05-054UT	LD_UTIL	ISSUED		INSTALL 6' OF 1 - 6" & 2 - 5" PVC CONDUITS TO POLE	SMC
LD04-113UT	LD_UTIL	ISSUED	12887 MAP	RELOCATE VERIZON CABLE AT SANTIAGO ROAD	SMC
LD04-110UT	LD_UTIL	ISSUED	13089 MAP	OPERATE AND MAINTAIN UNDERGROUND TELEPHONE FACILIT	SMC
LD04-165UT	LD_UTIL	ISSUED	13423 MAP	POTHOLING FOR RCWD 1305 PRESSURE PIPELINE INTERCONNECT	SMC
LD05-041UT	LD_UTIL	ISSUED	19582 MAP	INSTALL 26' OF 1-4" PVC & 1 - 62"X72"X6" CONC. PAD	SMC
LD05-035UT	LD_UTIL	ISSUED	19872 MAP	INSTALL OVERHEAD TRANSFORMER	SMC
LD04-133UT	LD_UTIL	ISSUED	19939 MAP	DIRECTIONAL BORE PECHANGA @ RAINBOW CYN & EDUARDO	SMC
LD04-086UT	LD_UTIL	ISSUED	20319 MAP	EXCAVATE AND INSTALL 10' OF 2-4" PVC CONDUITS	SMC
LD04-167UT	LD_UTIL	ISSUED	22513 MAP	OPEN 4 STRUCTURES AND MANDREL CONDUITS --	SMC
LD04-100UT	LD_UTIL	ISSUED	23174 MAP	00-INSTALL 162 LF OF 1 - 4" PVC CONDUIT & PCC PAD.	SMC
LD05-027UT	LD_UTIL	ISSUED	23561 MAP	EXCAVATE AND INSTALL 154 LF OF 4-5" CONDUITS	SMC
LD04-149UT	LD_UTIL	ISSUED	24085 MAP	INSTALL 2" SERVICE - 4' X 3' BELL & 4' X 2' BELL	SMC
LD04-138UT	LD_UTIL	ISSUED	24085 MAP 2	INSTALL 2 HOT TAP WATER AND ONE SEWER CONNECTION	SMC
LD04-076UT	LD_UTIL	ISSUED	24134 MAP	INSTALL SERVICE LATERAL	SMC
LD03-098UT	LD_UTIL	PERM	24134 MAP 2	REPLACE 3' X 5' X 4' SPLICE BOX - 12' COND TO POLE	SMC
LD04-141UT	LD_UTIL	ISSUED	24136 MAP	INSTALL CATV POWER SUPPLY CABINET & 80' OF CONDUIT	SMC
LD05-018UT	LD_UTIL	ISSUED	25004 MAP	TM 25004 - INSTALL GAS MAINS AND CROSSINGS	SMC
LD05-042UT	LD_UTIL	ISSUED	25004 MAP 1	INSTALL6' OF 1-4" PVC & 1 66" X72"X6" CONC. PAD.	SMC
LD04-140UT	LD_UTIL	ISSUED	26828 MAP	INSTALL CROSSING FOR VERIZON	SMC
LD05-040UT	LD_UTIL	ISSUED	26852 MAP	INSTALL 15' 1-4" PVC & 1 - 66" X 72" X 6" CONC PAD.	SMC
LD05-030UT	LD_UTIL	ISSUED	27270 MADISON AV	INSTALL 8" WATER CONNECTION FOR 27270 MADISON AVE	SMC
LD05-013UT	LD_UTIL	ISSUED	27525 W ENTERPRISE CR	TELEPHONE SERVICE	SMC

Activity	Type of Plan	Status	Address	Description	Plan Checker
LD05-009UT	LD_UTIL	ISSUED	28459 OLD TOWN FRONT ST	INSTALL GAS SERVICE	SMC
LD05-031UT	LD_UTIL	ISSUED	28459 OLD TOWN FRONT ST	INSTALL A WATER LINE CONNECTION	SMC
LD05-059UT	LD_UTIL	ISSUED	28915 VALLEJO AV	INSTALL NEW GAS SERVICES	SMC
LD04-152UT	LD_UTIL	ISSUED	29133 MAP	INSTALL NEW GAS MAIN ON YNEZ ROAD TO LAURIE RAE LN	SMC
LD04-155UT	LD_UTIL	ISSUED	29133 MAP	INSTALL JOINT TRENCH CROSSING YNEZ ROAD	SMC
LD04-077UT	LD_UTIL	ISSUED	29305 MAP	INSTALL 1487 LF OF 4-INCH GAS LINE	SMC
LD04-083UT	LD_UTIL	ISSUED	29305 MAP	LOWER 55 LF OF 2" PLASTIC GAS MAIN BELOW CHNNL	SMC
LD04-157UT	LD_UTIL	ISSUED	29305 MAP 1	INSTALL THREE GAS LINE CROSSINGS	SMC
LD05-029UT	LD_UTIL	ISSUED	29305 MAP 1	INSTALL SCE CROSSING ON PECHANGA PKWAY	SMC
LD04-108UT	LD_UTIL	ISSUED	29353 MAP	INSTALL 2144 LF OF 2-4" CONDUIT FOR COMMUNICATIONS	SMC
LD04-154UT	LD_UTIL	ISSUED	29661 MAP 3	INSTALL DRY UTILITIES	SMC
LD04-137UT	LD_UTIL	ISSUED	29661 MAP 4	INSTALL DRY UTILITIES FOR TRACT 29661-4 RORIPAUGH	SMC
LD04-136UT	LD_UTIL	ISSUED	29746 RANCHO CALIFORNIA RD	EXCAVATE AND INSTALL 2" COPPER WATER SERVICE	SMC
LD04-095UT	LD_UTIL	ISSUED	29798 MAP	INSTALL VERIZON CONDUIT XING PECHANGA AT WOLF VALL	SMC
LD04-105UT	LD_UTIL	ISSUED	29798 MAP	TRENCH FOR JOINT UTILITY CONDUITS INCLUDING CROSSINGS AT MAC	SMC
LD04-106UT	LD_UTIL	ISSUED	29798 MAP	INSTALL JOINT UTILITIES	SMC
LD04-112UT	LD_UTIL	ISSUED	29798 MAP	OPERATE AND MAINTAIN TELEPHONE FACILITES	SMC
LD05-015UT	LD_UTIL	ISSUED	29798 MAP	INSTALL JOINT TRENCH FOR VARIOUS DRY UTILITIES INCLUDING GAS AN	SMC
LD05-016UT	LD_UTIL	ISSUED	29798 MAP	INSTALL DRY UTILITIES	SMC
LD04-116UT	LD_UTIL	ISSUED	29798 MAP 1	OPERATE AND MAINTAIN UNDERGROUND TELEPHONE FACILIT	SMC
LD04-117UT	LD_UTIL	ISSUED	29798 MAP 1	OPERATE AND MAINTAIN TELEPHONE FACILITIES	SMC
LD05-012UT	LD_UTIL	ISSUED	29798 MAP 10	OPERATE & MAINTAIN UNDERGROUND TELEPHONE FACILITIE	SMC
LD04-085UT	LD_UTIL	ISSUED	29798 MAP 2	INSTALL DRY UTILITY SLEEVE CROSSINGS	SMC
LD04-097UT	LD_UTIL	ISSUED	29798 MAP 3	OPERATE AND MAINTAIN TELEPHONE FACILITIES	SMC
LD04-099UT	LD_UTIL	ISSUED	29798 MAP 3	OPERATE AND MAINTAIN TELEPHONE FACILITIES	SMC
LD04-094UT	LD_UTIL	ISSUED	29798 MAP 5	INSTALL JOINT TRENCH FOR ALL DRY UTILITIES	SMC
LD04-115UT	LD_UTIL	ISSUED	29798 MAP 5	OPERATE AND MAINTAIN TELEPHONE FACILITIES	SMC

Activity	Type of Plan	Status	Address	Description	Plan Checker
LD04-109UT	LD_UTIL	ISSUED	29798 MAP 6	INSTALL JOINT UTILITY CROSSINGS AT MANATEE WAY AND BASSWOOD CO	SMC
LD04-098UT	LD_UTIL	ISSUED	29798 MAP 7	OPERATE AND MAINTAIN TELEPHONE FACILITIES	SMC
LD04-121UT	LD_UTIL	ISSUED	29798 MAP 8	OPERATE AND MAINTAIN TELEPHONE FACILITIES	SMC
LD05-014UT	LD_UTIL	ISSUED	29798 MAP 9	OPERATE AND MAINTAIN TELEPHONE FACILITIES	SMC
LD04-123UT	LD_UTIL	ISSUED	29928 MAP 2	INSTALL POWER SUPPLY CABINET	SMC
LD04-166UT	LD_UTIL	ISSUED	30107 MAP	*6// n	SMC
LD04-087UT	LD_UTIL	ISSUED	30621 SAN PASQUAL RD	EXTEND 2" GAS MAIN - CUT & BORE MAIN W/ BELLHOLES	SMC
LD04-111UT	LD_UTIL	ISSUED	30667 MAP	OPERATE AND MAINTAIN TELEPHONE FACILITIES -	SMC
LD05-011UT	LD_UTIL	ISSUED	30667 MAP	INSTALL CONDUITS AND POWER SUPPLY PEDESTAL FOR TV	SMC
LD04-120UT	LD_UTIL	ISSUED	30667 MAP 1	OPERATE AND MAINTAIN TELEPHONE FACILITIES	SMC
LD04-131UT	LD_UTIL	ISSUED	30667 MAP 2	OPERATE AND MAINTAIN TELEPHONE FACILITIES	SMC
LD04-119UT	LD_UTIL	ISSUED	30667 MAP 3	OPERATE AND MAINTAIN TELEPHONE FACILITIES	SMC
LD04-118UT	LD_UTIL	ISSUED	30668 MAP	OPERATE AND MAINTAIN TELEPHONE FACILITIES	SMC
LD04-134UT	LD_UTIL	ISSUED	30668 MAP 1	OPERATE AND MAINTAIN TELEPHONE FACILITIES	SMC
LD04-122UT	LD_UTIL	ISSUED	30669 MAP	OPERATE AND MAINTAIN TELEPHONE FACILITIES	SMC
LD04-130UT	LD_UTIL	ISSUED	30669 MAP 1	OPERATE & MAINTAIN TELEPHONE FACILITIES	SMC
LD04-132UT	LD_UTIL	ISSUED	30669 MAP 2	OPERATE AND MAINTAIN TELEPHONE FACILITIES	SMC
LD05-055UT	LD_UTIL	ISSUED	30820 SAN PASQUAL RD	INSTALL NEW GAS SERVICE- BORE 1' PLASTIC SERVICE	SMC
LD05-017UT	LD_UTIL	ISSUED	30951 RIVERTON LN	EXCAVATE AND INSTALL ONE 1" COPPER SERVICE LATERAL	SMC
LD04-153UT	LD_UTIL	ISSUED	31053 MAP 1	INSTALL GAS MAIN	SMC
LD04-129UT	LD_UTIL	ISSUED	31075 JEDEDIAH SMITH RD	INSTALL 270 LF OF GAS MAIN	SMC
LD04-124UT	LD_UTIL	ISSUED	31143 NICOLAS RD	INSTALL 2" WATER SERVICE, 12" FOR DET CK, FH CONN	SMC
LD05-008UT	LD_UTIL	ISSUED	31143 NICOLAS RD	INSTALL SERVICE FOR THE PRESBYTERIAN CHURCH	SMC
LD04-168UT	LD_UTIL	ISSUED	31188 JEDEDIAH SMITH RD	INSTALL ELECTRICAL CONDUIT FOR HOUSE SERVICE	SMC
LD04-084UT	LD_UTIL	ISSUED	31259 MAP	INSTALL 72 LF OF SEWER LAT. AND 60 LF OF 24"RCP SD	SMC
LD04-114UT	LD_UTIL	ISSUED	31724 MAP	INSTALL NEW SERVICE 2 EA 3' X 2' AC CUTS - BORE	SMC
LD05-043UT	LD_UTIL	ISSUED	31950 PAUBA RD	GAS SERVICE REPLACEMENT - FIVE 4' X 2' AC CUTS	SMC

Activity	Type of Plan	Status	Address	Description	Plan Checker	
LD05-026UT	LD_UTIL	ISSUED	32015 DE PORTOLA RD	INSTALL ELECTRICAL COMMUNICATION CONDUITS & PEDEST	SMC	
LD04-075UT	LD_UTIL	PERM	ISSUED	3334 MAP	INSTALL 531' MAIN ON MORAGA S/O RANCHO CALIF. RD	SMC
LD04-107UT	LD_UTIL	ISSUED	3334 MAP	INSTALL CALIBRATE & REMOVE SEWER FLOW MONITORING	SMC	
LD04-089UT	LD_UTIL	ISSUED	3552 MAP	INSTALL GAS SERVICE	SMC	
LD04-158UT	LD_UTIL	ISSUED	40045 CALLE MEDUSA	INSTALL NEW GAS SERVICE	SMC	
LD04-148UT	LD_UTIL	ISSUED	40460 CALLE TIARA	INSTALL NEW GAS MAIN	SMC	
LD05-052UT	LD_UTIL	ISSUED	41555 WINCHESTER RD	INSTALL A NEW 1" PLASTIC SERVICE	SMC	
LD04-164UT	LD_UTIL	ISSUED	41593 WINCHESTER RD	LOWER TWO GAS SERVICE LATERALS	SMC	
LD05-044UT	LD_UTIL	ISSUED	41720 WINCHESTER RD	INSTALL WATER SERVICE LATERAL	SMC	
LD04-151UT	LD_UTIL	ISSUED	41823 N ENTERPRISE CR	INSTALL 12" RCWD SERVICE AND VALVE	SMC	
LD04-150UT	LD_UTIL	ISSUED	41965 CALLE CEDRAL	INSTALL NEW GAS SERVICE	SMC	
LD05-028UT	LD_UTIL	ISSUED	42072 5TH ST	INSTALL 240' OF 2" MAIN BY BORING AT SOUTH SIDE OF FIFTH STREET	SMC	
LD05-058UT	LD_UTIL	ISSUED	42072 5TH ST	INSTALL 450 LF OF 1 - 4" ELECTRIC CONDUIT	SMC	
LD04-090UT	LD_UTIL	ISSUED	42108 ROICK DR	INSTALL 116 LF OF CONDUIT AND TWO PULL BOXES	SMC	
LD04-139UT	LD_UTIL	ISSUED	42108 ROICK DR	INSTALL 10" DCDA FOR RCWD, HOT TAP 16" WATERMAIN	SMC	
LD04-092UT	LD_UTIL	ISSUED	43300 SAN FERMIN PL	INSTALL NEW GAS SERVICE	SMC	
LD05-032UT	LD_UTIL	ISSUED	43845 CALLE DE VELARDO	INSTALL GAS SERVICE TO HOME	SMC	
LD04-088UT	LD_UTIL	ISSUED	43961 CALLE DE VELARDO	INSTALL DRIVEWAY APPROACH PER STANDARD 207A	SMC	
LD05-057UT	LD_UTIL	ISSUED	43976 CALLE DE VELARDO	INSTALL NEW GAS SERVICE	SMC	
LD05-060UT	LD_UTIL	ISSUED	44062 PALMA DR	INSTALL NEW GAS MAIN	SMC	
LD04-091UT	LD_UTIL	ISSUED	45000 PECHANGA PARKWAY	INSTALL NEW GAS SERVICE	SMC	
LD05-034UT	LD_UTIL	ISSUED	45414 N WOLF CREEK RD	INSTALL METER AND CONDUIT FOR CATV SERVICE	SMC	



CITY OF TEMECULA

Land Development Activity Report

Reporting Period 7/1/2004 through 5/1/2005

Activity	Type of Plan	Status	Address	Description	Plan Checker	
LD04-174GR	LD_GRADE	SFR	ISSUED	13901 MAP	PARCEL 3	RJ
LD04-260GR	LD_GRADE	PA_PGP	ISSUED	22513 MAP	PARCEL 1	CW
LD04-186GR	LD_GRADE	MGR_RG	ISSUED	23173 MAP 1	ROUGH GRADING PLAN FOR PABLO APIS PARK CIP PROJECT PW02-02. E	SC
LD05-054GR	LD_GRADE	MGR_RG	ISSUED	23513 MAP	ROUGH GRADING PLAN (Sht.2-6of6) REVISION #2	CW
LD04-205GR	LD_GRADE	PA_PGP	ISSUED	25004 MAP	LOTS 75 - 79 MODEL COMPLEX (PA04-0526)	JP
LD04-270GR	LD_GRADE	PA_PGP	ISSUED	25004 MAP	LOT 36 & 37 TEMPORARY SALES TRAILER	JP
LD04-163GR	LD_GRADE	MGR_RG	ISSUED	26521 MAP	ROUGH GRADING w/ EROSION CONTROL	JP
LD04-140GR	LD_GRADE	REV	ISSUED	27987 MAP 1	PGP (Sht.2Cof15) PHASE 2 REVISION #7	CW
LD05-016GR	LD_GRADE	PA_PGP	ISSUED	28401 RANCHO CALIFORNIA RD	LOT 22	
LD04-242GR	LD_GRADE	SFR	ISSUED	28915 VALLEJO AV	LOT 7 OF TRACT 3552	RJ
LD04-241GR	LD_GRADE	SFR	ISSUED	28945 VALLEJO AV	LOT 8	RJ
LD04-111GR	LD_GRADE	PGP	ISSUED	29275 SANTIAGO RD	LOT 10	CW
LD02-137GR	LD_GRADE	GR	ISSUED	29305 MAP	CHANNEL & STORM DRAIN IMPROVEMENT PLANS	CW
LD05-024GR	LD_GRADE	MGR_RG	ISSUED	29305 MAP	GRADING FOR SPORTS COMPLEX - PECHANGA PKY	SC
LD04-195GR	LD_GRADE	PA_PGP	ISSUED	29305 MAP 1	LOT 18-22 WOLF CREEK DR NORTH (NORTH SIDE)	CW
LD04-125GR	LD_GRADE	PGP	ISSUED	29748 RANCHO CALIFORNIA RD	PORTION OF PARCELS 2 & 3	JP
LD04-171GR	LD_GRADE	PA_PGP	ISSUED	29775 SANTIAGO RD	LOT 9	RJ
LD05-003GR	LD_GRADE	SFR	ISSUED	29880 LOS NOGALES RD	LOT 209 TRACT 3929	RJ
LD04-168GR	LD_GRADE	REV	ISSUED	30107 MAP	PCL 4 PGP (AddSht.2Aof4) REVISION #1	CW
LD04-178GR	LD_GRADE	SFR	ISSUED	30109 VIA ARBOLEDA	LOT 247	RJ
LD04-259GR	LD_GRADE	PA_PGP	ISSUED	30180 MAP	PCL 9 & 10	CW
LD04-003GR	LD_GRADE	MGR/RG	ISSUED	30264 MAP	ROUGH GRADING FOR -1 THRU -F	CW
LD04-093GR	LD_GRADE	SFR	ISSUED	30580 DEL REY RD	TR 3883 LOT 509 SINGLE FAMILY RESIDENCE	RJ

Activity	Type of Plan	Status	Address	Description	Plan Checker	
LD04-234GR	LD_GRADE	PA_PGP	ISSUED	30607 HIGHWAY 79 SOUTH	PARCEL 8	CV
LD04-167GR	LD_GRADE	SFR	ISSUED	30630 SAN PASQUAL RD	LOT 36	RJ
LD04-018GR	LD_GRADE	SFR	ISSUED	30757 JEDEDIAH SMITH RD	TR-9833 LOT 2 & 5 TWO SINGLE FAMILY RESIDENCES	RJ
LD03-296GR	LD_GRADE	PGP	ISSUED	30797 MAP	PCL 1 MINI WAREHOUSE PRECISE GRADING	JP
LD04-149GR	LD_GRADE	SFR	ISSUED	30820 SAN PASQUAL RD	LOT 30	KH
LD03-094GR	LD_GRADE	REV	ISSUED	31011 JEDEDIAH SMITH RD	TM9833 LOT 8 PGP REVISION #1	RJ
LD04-080GR	LD_GRADE	SFR	ISSUED	31044 JEDEDIAH SMITH RD	LOT 27	KH
LD04-144GR	LD_GRADE	SFR	ISSUED	31144 MAP	PCL 2 & 3	KH
LD03-266GR	LD_GRADE	SFR	ISSUED	31188 JEDEDIAH SMITH RD	LOT 20	KH
LD04-126GR	LD_GRADE	SFR	ISSUED	31217 KAHWEA RD	LOT 13 TR 21820	RJ
LD04-239GR	LD_GRADE	SFR	ISSUED	31240 PEGGY LOU LN	PARCEL 2	RJ
LD04-153GR	LD_GRADE	MGR/RG	ISSUED	31276 MAP	LOTS 1-60	KH
LD03-280GR	LD_GRADE	SFR	ISSUED	31289 JEDEDIAH SMITH RD	TM9833-2 LOT37 SINGLE FAMILY RESIDENCE	RJ
LD04-206GR	LD_GRADE	PA_PGP	ISSUED	31390 RANCHO COMMUNITY WY	PARCEL 11	CW
LD04-192GR	LD_GRADE	MGR_RG	ISSUED	31898 MAP	LOTS 1-126	CV
LD04-258GR	LD_GRADE	PA_PGP	ISSUED	31898 MAP	UNIT 118 - 121 MODELS w/ PARKING LOT	CV
LD04-257GR	LD_GRADE	PA_PGP	ISSUED	31934 HIGHWAY 79 SOUTH	PARCEL 1	CW
LD04-208GR	LD_GRADE	MGR_RG	ISSUED	32169 MAP	CONDOS PHASE 2 - HARVESTON (Neighborhood 12)	RJ
LD04-209GR	LD_GRADE	MGR_RG	ISSUED	32170 MAP	CONDOS PHASE 2	RJ
LD04-295GR	LD_GRADE	MGR_RG	ISSUED	32437 MAP	ROUGH GRADING w/ EROSION & SEDIMENT CTRL	RJ
LD04-029GR	LD_GRADE	PGP	ISSUED	32675 HIGHWAY 79 SOUTH	PARCEL 2 PAD B	KH
LD04-282GR	LD_GRADE	SFR	ISSUED	3552 MAP	LOT 29	KH
LD04-175GR	LD_GRADE	SFR	ISSUED	3883 MAP	LOT 436	RJ
LD04-229GR	LD_GRADE	SFR	ISSUED	41380 LA SIERRA RD	TR 3929 LOT 215	RJ
LD04-076GR	LD_GRADE	PGP	ISSUED	41649 MARGARITA RD	PCL 20, 21 & 23 PER LLA PA03-0722 PM 30208	JP
LD04-203GR	LD_GRADE	PA_PGP	ISSUED	41875 C ST	PARCEL 1	CW
LD04-299GR	LD_GRADE	PA_PGP	ISSUED	41888 4TH ST	MB 15 / 726 BLOCK 4 LOT 31 & 32	JP

Activity	Type of Plan	Status	Address	Description	Plan Checker	
LD04-173GR	LD_GRADE	PA_PGP	ISSUED	42072 5TH ST	PENFOLD OLD TOWN	KH
LD05-026GR	LD_GRADE	MGR_RG	ISSUED	42101 MORAGA RD	PLACE APPROX. 300 CY OF FILL LESS THAN ONE FOOT IN THICKNESS	SC
LD04-166GR	LD_GRADE	PA_PGP	ISSUED	42235 WINCHESTER RD	PARCEL 92 & 93	CW
LD04-135GR	LD_GRADE	PGP	ISSUED	42520 RIO NEDO	PCL 20 & 21 OF PM21383 / PCL 33 OF PM21382	CW
LD04-090GR	LD_GRADE	PGP	ISSUED	43040 MARGARITA RD	LOT 79	CW
LD04-098GR	LD_GRADE	SFR	ISSUED	43520 SAN FERMIN PL	GRADING AND EROSION CONTROL PERMIT/ TR9833-2 LOT 22 EARTHWOR	RJ
LD04-217GR	LD_GRADE	SFR	ISSUED	44000 PALMA DR	LOT 30 SINGLE FAMILY RESIDENCE	RJ
LD04-202GR	LD_GRADE	SFR	ISSUED	44044 MOUNTAIN VIEW	PARCEL 3	RJ
LD04-264GR	LD_GRADE	SFR	ISSUED	6228 MAP	PARCEL 3	RJ
LD04-079GR	LD_GRADE	SFR	ISSUED	9833 MAP	LOT 1	KH

APPENDIX G
Construction Inspection Checklist



NPDES Construction Activity Compliance Inspection Notice

Public Works Department / NPDES
 43200 Business Park Dr. Temecula, CA
 (909) 694-6411

Project #:	WDID#:	Weather:	Date:
Grading permit number:	Developer:	Inspected by:	Date last inspected

Project location:

NOTICE: In conformance with the National Pollutant Discharge Elimination System (NPDES) Municipal Separate Storm Sewer System (MS4) permit for the Santa Margarita Watershed, the Cities and County are mandated to perform NPDES construction site inspections to determine if the site is in compliance or not in compliance with Storm Water Ordinances, regulations, and codes.

Check the box adjacent to items for which deficiencies were observed.

1	Tracking controls in place at all entry and exits.	[]
2	Tracking of sediment beyond project perimeter.	[]
3	Interior and impacted exterior streets are swept & free of pollutants.	[]
4	Perimeter controls are in place and maintained.	[]
5	Sediment controls are present on all interior streets and maintained.	[]
6	BMP's in place at CB's & Discharge points / Functioning / Maintained.	[]
7	Sediment and/or other pollutants at inlets or discharge points.	[]
8	All other sediment controls are in place / functioning / maintained.	[]
9	Sediment discharge beyond project limits or in area requiring protection.	[]
10	All slopes received erosion controls.	[]
11	Erosion present on slopes.	[]
12	Non-stormwater discharges observed / evident.	[]
13	Construction materials stored in designated areas.	[]
14	Construction materials stored properly.	[]
15	Liquid materials stored properly.	[]
16	PCC waste storage area in place and maintained.	[]
17	Waste materials stored properly.	[]
18	BMP's in place for equipment maintenance / functioning / maintained.	[]
19	Litter / housekeeping / maintained.	[]
20		[]

NOTICE: The Porter-Cologne Water Quality Control Act of the State of California states in part that persons violating water quality objectives can be held civilly and criminally liable and the Federal Clean Water Act states in part that persons violating the Act may be held civilly and criminally liable.

Comments: _____

Site Contact:	Received by:	Phone:	Time:
---------------	--------------	--------	-------

Action taken:

Verbal [] Written warning [] Administrative citation [] Corrective Action Notice [] Stop Work Notice []

NPDES Inspection Frequency Sheet

High Priority Sites <i>(Inspect once every two weeks during the wet season)</i>	1	2	3	4	5	6	7	8	9	10	11	12	13	14	15	16	17	18	19	20	21	22	23	24	25	26	27	28	29	30	31	Inspector
Pechanga Stormdrain & Channel - COT																																Rudy
Pechanga Parkway																																
Wolf Creek																																Pat
LLC (Standard Pacific)																																
Aspen (Standard Pacific)																																
(Woodside Homes)																																
Sequoia (William Lyons)																																
Cedar (Standard Pacific)																																
Copper Moon (DL Horton)																																
Crowne Hill																																Doug
Vacant Lot (Newland)																																
Astoria (Greystone)																																
The Reserve (Craftsman Homes)																																
School Site (Edge Development)																																
Roripaugh Ranch Panhandle																																Jack
Ashby LLC																																
Griffin																																
Meeker																																
Davidson																																
Shea																																
Continental																																
Roripaugh Ranch Pan																																Jack
Ashby LLC																																
Harveston Phase I																																Doug
Cape May (Suffolk)																																
Lake House (LnrHomes)																																
Vacant Lot (Greystone)																																
Harveston Phase II																																Doug
Chatham (USHome)																																
Lake Front Cottages (U.S. Home)																																
St. Augustine (Christopher)																																
Ashville (Greystone)																																
Sarasota (Greystone)																																
Auburn Lane (LnrHomes)																																
Sausalito (LnrHomes)																																
Savannah (Wlyons)																																
Sausalito (Greystone)																																
Walden (Christopher)																																

I = Inspected
 N = Inspection Notice Issued
 F = Follow-Up Required
 M/C = Met/Called Responsible Party

CIT = Citation Issued
 WB = SDRWQCB Rep Present
 ** = New Site

NPDES Inspection Frequency Sheet

High Priority Sites (<i>Inspect once every two weeks during the wet season</i>)																															Inspector		
	1	2	3	4	5	6	7	8	9	10	11	12	13	14	15	16	17	18	19	20	21	22	23	24	25	26	27	28	29	30	31		
Common Areas & Undeveloped (LnrCommunities)																																	
Harveston Phase III																																	Jack
Lennar																																	
Temecula Estates - K&B Homes																																	Doug
Serafina and Murrieta Hot Springs																																	
Temecula Creek Villages - Wermers																																	Jack
79 South e/o Pechanga																																	
Creeside Plaza - Peninsula Retail Dev.																																	Jack
79 South & Pechanga																																	
Travado - Shea Homes																																	Doug
Cebu Drive																																	
Single Family Residence - Fred Connary																																	Pat
30876 Lolita Road																																	
Single Family Residence - Michael Lavasani																																	Pat
30854 Lolita Road																																	
Vacant Lot - COT																																	Jack
End of Front Street (& 79 South)																																	
Vacant Lot - American Property Enterprises																																	
Tierra Vista & Ynez																																	
Commercial Building -																																	Jack
42072 Fifth Street (next to Texas Lil's)																																	
Old Town Community Theatre - COT																																	
West end of 4rth Street																																	
Commercial Building - Craig Majewski																																	Jack
Enterprise Circle West (corner site)																																	
Pechanga Sports Complex - COT																																	
Pechanga & Deer Hollow Drive																																	
Multiple Single Family - Gallery Homes																																	
Santiago Road e/o John Warner																																	

I = Inspected
 N = Inspection Notice Issued
 F = Follow-Up Required
 M/C = Met/Called Responsible Party

CIT = Citation Issued
 WB = SDRWQCB Rep Present
 ** = New Site

NPDES Inspection Frequency Sheet

Medium Priority Sites <i>(Inspect three times during the wet season)</i>	1	2	3	4	5	6	7	8	9	10	11	12	13	14	15	16	17	18	19	20	21	22	23	24	25	26	27	28	29	30	31	Inspector			
Jefferson Ave. Rehab. - COT																																			
Overland to Rancho California Road																																			
Redhawk Office Park - Reno																																			
43648 Ridge Park Dr s/o Business Park Dr																																			
Linfield High School -																																			
31950 Pauba Road																																			
Rancho Comm. Church - Diffenbaugh																																			
79 South e/o Pechanga																																			
Multiple Single Family - Rilington																																			
Pauba & Brighton Ridge Lane (near fire dept.)																																			
Avondale - Richmond American																																			
Rita & Seraphina																																			
The Fountains Apartments - RCH Construction																																			
Winchester & Nicholas																																			
Commercial Plaza - D&D Construction																																			
40573 Margarita (& N.G.Kearney (across Promenade mall))																																			
Vail Ranch Town Square - Square One																																			
Mahlon Vail Circle & Wolfe Store Road																																			
Office Center - Sigma																																			
42149/42175/42215/42239/42261 Zevo																																			
Sand Operation - Garrett Group																																			
Dendy Pwy																																			
Gallery Traditions - Michael Lanni																																			
Ynez s/o Pauba																																			
Grace Presbyterian Church -																																			
31143 Nicolas (c/o Calle Medusa)																																			
Red Lobster - Bergman Companies																																			
41649 Margarita & Overland																																			
Margarita Office Center -																																			
43040 Margarita Raod																																			
Multiple Single Family - Seaway Properties																																			
Santiago e/o Vallejo																																			
Multiple Single Family - Legacy Group																																			
Pauba & Calle Cedral																																			
Rancho Community Church -																																			
43300 Business Park Drive																																			
Rancho Baptist Church -																																			
29775 Santiago Road & C Street																																			

I = Inspected
 N = Inspection Notice Issued
 F = Follow-Up Required
 M/C = Met/Called Responsible Party

CIT = Citation Issued
 WB = SDRWQCB Rep Present
 ** = New Site

NPDES Inspection Frequency Sheet

Low Priority Sites <i>(Inspect as needed during the wet season)</i>	1	2	3	4	5	6	7	8	9	10	11	12	13	14	15	16	17	18	19	20	21	22	23	24	25	26	27	28	29	30	31	Inspector
Commercial Building - COT																																Jack
41911 5th Street (& Mercedes)																																
Single Family - Glenn Plunkett (RCWD easement)																																Doug
43943 Calle De Velardo																																
Single Family - Allen Pulsipher (below Plunkett)																																Pat
43961 Calle De Velardo																																
Single Family - Eric Boehm																																Jack
43976 Calle De Velardo near Jedediah Smith																																
Single Family - Dennis Marchand																																Jack
43525 Calle De Velardo (end of culdesac)																																
Single Family - Azim Azhand																																Jack
31097 Jedediah Smith w/o El Faro																																
Single Family - Peter Pacitto																																Jack
31075 Jedediah Smith w/o El Faro																																
Single Family - David Zamiski																																Jack
31043 Jedediah Smith w/o El Faro																																
Single Family - Charlie Perry																																Doug
Jedediah Smith & Pescado																																
Single Family - Paul Gupta																																Jack
30943 Jedediah Smith w/o El Faro																																
Single Family - James Fay																																Doug
31188 Jedediah Smith																																
Single Family - Art Gaitan																																Doug
43710 Piasano (end of culdesac)																																
Single Family - Nicholas Konicki																																Pat
31107 Mariposa Pl. (end of culdesac)																																
Single Family - Michael McKernon																																Doug
40045 Calle Medusa & Enfield																																
Single Family - Troy Juve																																Pat
Enfield Lane (end of street)																																
Single Family - Stonecrest Custom Homes																																Doug
43165/43195 Avenida De San Pasqual																																
Single Family - Michael McLaren																																Doug
30630 Avenida De San Pasqual Rd																																
Single Family Residence - Walter Zeppier Construction																																Pat
40545 Calle Torcida																																
Single Family - Tim Long																																Pat
John Warner & Jeramie Drive																																

I = Inspected
 N = Inspection Notice Issued
 F = Follow-Up Required
 M/C = Met/Called Responsible Party

CIT = Citation Issued
 WB = SDRWQCB Rep Present
 ** = New Site

NPDES Inspection Frequency Sheet

Low Priority Sites (Inspect as needed during the wet season)	1	2	3	4	5	6	7	8	9	10	11	12	13	14	15	16	17	18	19	20	21	22	23	24	25	26	27	28	29	30	31	Inspector	
Single Family - MER																																	Doug
43681 Piasano Place (top of Cul de Sac)																																	
Commercial Building - CCM																																Jack	
42210 Roick Dr.																																	
Commercial Center - Taylor Frager																																	
Calle Empleado & Rio Nedo																																	
Single Family - (Rudy Berry?)																																Pat	
41965 (41837?) Calle Cedral																																	
Single Family -																																Pat	
40641 Calle Fiesta																																	
Single Family -																																Doug	
40410 Carmelita Circle																																	
Commercial Center -																																Doug	
40940/40980 County Center Drive																																	
Single Family -																																Pat	
43644 El Faro																																	
Single Family -																																Pat	
32509 Hupa Drive																																	
Commercial Center -																																Doug	
28459 Old Town Front Street																																	
Single Family -																																Pat	
30951 Riverton Lane																																	
Vacant Lot - Michael Lanni																																Jack	
Ynez n/o Santiago																																	
Single Family -																																Jack	
31191 Kahwea Road																																	
Commercial Center - Winchester Pavilion																																Doug	
41720 Winchester (e/o Enterprise Circle)																																	
Commercial Center - Rancon Real estate																																Doug	
27247 Madison Avenue																																	
Single Family - Robert Connors **																																	
31011 Jedediah Smith																																	
Single Family - Legacy Group Inc																																Pat	
43224 Ormsby																																	
Single Family - Halper																																Jack	
44000 Palma Drive (end of culdesac)																																	
Commercial Building - Kaylind Development																																Jack	
42044 Winchester w/o Diaz																																	

I = Inspected
 N = Inspection Notice Issued
 F = Follow-Up Required
 M/C = Met/Called Responsible Party

CIT = Citation Issued
 WB = SDRWQCB Rep Present
 ** = New Site

NPDES Inspection Frequency Sheet

Low Priority Sites <i>(Inspect as needed during the wet season)</i>	1	2	3	4	5	6	7	8	9	10	11	12	13	14	15	16	17	18	19	20	21	22	23	24	25	26	27	28	29	30	31	Inspector
Rancho Dental - Perry Davis																																Jack
29746 Lyndie Ln (& Rancho Cal)																																
Commercial Center -																																Jack
29748 Lyndie Ln (& Rancho Cal)																																
Single Family - John Donaldson																																
43510 Verde Drive																																
Single Family - Teffenhart Construction																																Pat
43520 San Fermin																																
Single Family - Brand Construction																																Doug
Santiago w/o Margarita (43300 San Fermin)																																
Single Family - Kevin McDaniel																																Doug
30425 La Presa Loop (end of culdesac)																																
Single Family - Walter Zeppeiri																																Doug
30109 Via Arboleda																																
Single Family - John Frazzini																																Pat
41380 La Sierra Road																																
Single Family - Refugio Ybarra																																Pat
44044 Mountain View																																
Single Family - Nasir Ahmed																																Pat
28915 & 28945 Vallejo Avenue																																
Single Family - Craig Pulido																																Pat
30870 Avenida Del Reposo																																
Single Family - Kamal Odeh																																Pat
30621 San Pasqual Road																																
Single Family - John Tuccinardi																																
31044 Jedediah Smith																																
Single Family - Maurice Leon																																
44062 Palma Drive (end of culdesac)																																
Single Family - Robert Tuccinardi																																
30711 Jedediah Smith																																
Office Building - Robert Rosenstein **																																Doug
41888 4th Street																																

I = Inspected
 N = Inspection Notice Issued
 F = Follow-Up Required
 M/C = Met/Called Responsible Party

CIT = Citation Issued
 WB = SDRWQCB Rep Present
 ** = New Site

APPENDIX H
Industrial and Commercial Facility Inventory

CITY OF TEMECULA COMMERCIAL AND INDUSTRIAL FACILITIES LIST

(As of May 1, 2005)

FIRM NAME	ADDRESS	SIC NO	BUSINESS TYPE	PRIORITY
Bruce Newman	42270 Agena St	2499001	Wood Products, Not Elsewhere Classified	H
V P Italia Tile & Stone	41790 Winchester Rd #A	2499099	Tile, Cork	H
Adobe Plaza Cleaners	27625 Jefferson Ave #100	2842016	Drycleaning Preparations	H
Black Knight Termite & Construction	39433 Colleen Way	2879001	Pesticides And Agricultural Chemicals, N	H
Cox Pest Control	31895 Calle Vimianzo	2879001	Pesticides And Agricultural Chemicals, N	H
Molding International & Eng	42136 Avenida Alvarado	3089001	Plastics Products, Not Elsewhere Classif	H
Rebs Enterprises	31695 Corte Rosario	3089047	Flower Pots, Plastics	H
Wall Dimensions Inc	43540 Nantes Court	3089116	Wall Coverings, Plastics	H
Bianchi International	27969 Jefferson Ave	3111001	Leather Tanning And Finishing	H
The Painted Garden	41946 5th Street	3312063	Wrought Pipe And Tubing, Made In Steel W	H
Wakefield Eng Inc	27901 Jefferson Ave	3341001	Secondary Smelting And Refining Of Nonfe	H
Channell Commercial Corp	26040 Ynez Rd	3356001	Rolling, Drawing, And Extruding Of Nonfe	H
Landmark Metalcoat Inc	42246 Sarah Way	3479001	Coating, Engraving, And Allied Services,	H
Laegers Inc	42180 Sarah Way	3498001	Fabricated Pipe And Pipe Fittings	H
P H E D Corporation	42389 Winchester Rd #A	3499027	Machine Bases, Metal	H
International Rectifier / Hexfit	41915 Business Park Dr	3674001	Semiconductors And Related Devices	H
Micro Grow Greenhouse Sys Inc	26111 Ynez Rd #C4	3674001	Semiconductors And Related Devices	H
Opto 22	43044 Business Park Dr	3674001	Semiconductors And Related Devices	H
Electro Support Systems Corp	42136 Sarah Way	3679001	Electronic Components, Not Elsewhere Cla	H
Procure Components Inc	42108 Orange Blossom Drive	3679001	Electronic Components, Not Elsewhere Cla	H
Temecula Marine Center Inc / Collins	41923 2nd Street	3732001	Boat Building And Repairing	H
Alaniz Watertrucks	31942 Poole Ct	4499001	Water Transportation Services, Not Elsew	H
Ramos Water Truck	41231 Via Aguila	4499001	Water Transportation Services, Not Elsew	H
Water Works Water Trucks	30800 Avenida Buena Suerte	4499001	Water Transportation Services, Not Elsew	H
Murrieta Valley R V Service Inc	27882 Del Rio	5012014	Recreational Vehicles\Wholesale	H
Temecula Valley R V Services Inc	28897 Front St	5012014	Recreational Vehicles\Wholesale	H
Auto Zone #5582	31837 Hwy 79 #A1	5013001	Motor Vehicle Supplies And New Parts	H
Kamikaze Racing	27498 W Enterprise Cr #2	5013001	Motor Vehicle Supplies And New Parts	H
Pure Motorsport	32005 Corte Cardin	5013001	Motor Vehicle Supplies And New Parts	H
Quality Tool & Equipment	42660 Rio Nedo	5013001	Motor Vehicle Supplies And New Parts	H
R H Company / N Y Tehk Products	29512 Georgetown Lane	5013005	Automotive Accessories\Wholesale	H
Rhino Linings Of Riverside Co	28822 Front Street #202	5013005	Automotive Accessories\Wholesale	H
Sector 1 1 1	41740 Enterprise Circle North #107	5013005	Automotive Accessories\Wholesale	H
Swirli Enterprises	32130 Corte Soledad	5013005	Automotive Accessories\Wholesale	H
U S A & Europe Autosale	42036 Moraga Rd #6 B	5013005	Automotive Accessories\Wholesale	H
Al's Performance Inc	28710-A Las Haciendas St #B	5013007	Automotive Parts, New \Wholesale	H
Auto Zone #5936	40345 Winchester Rd	5013007	Automotive Parts, New \Wholesale	H
Classic Car Concepts	43071 Business Park Dr	5013007	Automotive Parts, New \Wholesale	H
Japan Products Of U S A Co Ltd	26111 Ynez Rd #B 8	5013007	Automotive Parts, New \Wholesale	H

CITY OF TEMECULA COMMERCIAL AND INDUSTRIAL FACILITIES LIST

(As of May 1, 2005)

FIRM NAME	ADDRESS	SIC NO	BUSINESS TYPE	PRIORITY
Mark Shaffer's American Off Road	27941 Jefferson Ave #C	5013007	Automotive Parts, New \Wholesale	H
Matt - Imports	43695 Altamura Ct	5013007	Automotive Parts, New \Wholesale	H
Mirage U S A / Hot Bodies	27469 Colt Tourt	5013007	Automotive Parts, New \Wholesale	H
Old School Flake	26111 Ynez Rd #B12	5013007	Automotive Parts, New \Wholesale	H
Parts Plus Auto Parts / Long Beach	41860 Enterprise Circle So	5013007	Automotive Parts, New \Wholesale	H
Rancho Auto Parts	42011 Avenida Alvarado #A	5013007	Automotive Parts, New \Wholesale	H
Temecula Speed Center	28780 Old Town Front St #A3	5013007	Automotive Parts, New \Wholesale	H
V A Used Truck And Parts Supply Inc	26459 Ynez Rd #B	5013007	Automotive Parts, New \Wholesale	H
Virtual World Parts Inc	43391 Business Park Drive #C7	5013007	Automotive Parts, New \Wholesale	H
Vogtland North America Inc	43391 Business Park Dr #C6	5013007	Automotive Parts, New \Wholesale	H
Epoxy Pros	29487 Georgetown Lane	5013012	Garage Service Equipment\Wholesale	H
G I E Trading	45420 Calle Los Mochis	5013014	Motorcycle Parts\Wholesale	H
S S M Trading Inc	42387 Avenida Alvarado #111	5013014	Motorcycle Parts\Wholesale	H
Vigilant Sprockets	28710 Las Haciendas #C	5013014	Motorcycle Parts\Wholesale	H
Gomez Tire / Jose Adame	28093 Jefferson Ave	5014001	Tires And Tubes	H
Mickey Thompson Tires	43455 Business Park Dr	5014001	Tires And Tubes	H
Sand Tires Unlimited Inc	42198 Avenida Alvarado	5014001	Tires And Tubes	H
Aviation Parts Sales	28450 Felix Valdez #B	5088001	Transportation Equipment And Supplies, E	H
M G Aviation	42409 Winchester Rd	5088005	Aircraft Equipment And Supplies\Wholesale	H
Eclipse Custom Boats	28822 Old Town Front St #206	5088006	Boats, Except Pleasure\Wholesale	H
Advanced Golf Cars	32305 Corte Santa Catalina	5088008	Golf Carts, Self-Propelled\Wholesale	H
Empire Marine / Vetco Inc	28780 Front St	5091009	Boats, Pleasure: Canoes, Motorboats, And	H
19th Hole Golf Cart	28822 Front Street	5091015	Golf Carts, Except Self-Propelled\Wholes	H
Temecula Pool Supply	29700 Rancho Calif Rd G#11	5091019	Pool Equipment And Supplies\Wholesale	H
Leslie's Swimming Pool Supplies	40414 Winchester #D	5091021	Swimming Pools And Equipment\Wholesale	H
Tomra Pacific Inc / Hwy 79 South	33292 Hwy 79 South	5093001	Scrap And Waste Materials	H
Downs Oil Co Inc	43040 Rancho Way #200	5093011	Oil, Waste\Wholesale	H
A G S Services	43154 Via Dos Picos #F	5169031	Metal Polishes\Wholesale	H
Temecula Olive Oil Company	28653 Old Town Front St	5169034	Oil Additives\Wholesale	H
Carriage Motors Inc	27420 Ynez Rd	5511001	Motor Vehicle Dealers (New And Used)	H
Norm Reeves Chrysler Jeep Dodge	26845 Ynez Rd	5511001	Motor Vehicle Dealers (New And Used)	H
Norm Reeves Honda	26755 Ynez Rd	5511001	Motor Vehicle Dealers (New And Used)	H
Paradise Chevrolet	26845 Ynez Rd	5511001	Motor Vehicle Dealers (New And Used)	H
Rancho Ford Lincoln Mercury	26895 Ynez Rd	5511001	Motor Vehicle Dealers (New And Used)	H
Schumacher Auto Sales & Leasing	28733 Via Montezuma	5511001	Motor Vehicle Dealers (New And Used)	H
Toyota Of Temecula Valley	26631 Ynez Road	5511001	Motor Vehicle Dealers (New And Used)	H
Acumen Motors Ltd	41731 Enterprise Circle So #401	5511002	Automobile Agencies (Dealers)\Retail	H
Becky's Used Cars	32952 Paterno St	5511002	Automobile Agencies (Dealers)\Retail	H
Budget Auto Sales	26111 Ynez Rd # B 20	5511002	Automobile Agencies (Dealers)\Retail	H

CITY OF TEMECULA COMMERCIAL AND INDUSTRIAL FACILITIES LIST

(As of May 1, 2005)

FIRM NAME	ADDRESS	SIC NO	BUSINESS TYPE	PRIORITY
Quality Nissan Of Temecula	41895 Motor Car Parkway	5511002	Automobile Agencies (Dealers)\Retail	H
Kia Of Temecula Valley	27500 Jefferson Ave	5511003	Automobiles, New And Used\Retail	H
Savings Enterprises	27895 Diaz Rd #A	5521001	Motor Vehicle Dealers (Used Only)	H
Julie Deann Paterson	28693 Old Town Front St	5521002	Antique Autos\Retail	H
Arco #6305	40212 Winchester Rd	5541001	Gasoline Service Stations	H
Chevron #1838	31669 Highway 79 South	5541001	Gasoline Service Stations	H
Chevron Station	27560 Jefferson Ave	5541001	Gasoline Service Stations	H
Chevron Stations Inc #1814	28900 Rancho California Rd	5541001	Gasoline Service Stations	H
Chevron U S A Inc #201596	40635 Winchester Rd	5541001	Gasoline Service Stations	H
Chevron U S A Inc #204029	31669 Hwy 79 South	5541001	Gasoline Service Stations	H
Creekside Texaco Gas Food Mart	29115 Front St	5541001	Gasoline Service Stations	H
Mobil O T R #19137	33295 Highway 79 South	5541001	Gasoline Service Stations	H
Mobil Oil Corp #10193	44520 Bedford Court	5541001	Gasoline Service Stations	H
Mobil Oil Corp #10840	29500 Rancho California Rd	5541001	Gasoline Service Stations	H
Shell / Rancho California Shell	29750 Rancho Calif Rd	5541001	Gasoline Service Stations	H
Shell / Ynez Shell	26680 Ynez Rd	5541001	Gasoline Service Stations	H
Shell Oil Product U S	29750 Rancho California Rd	5541001	Gasoline Service Stations	H
Unocal 76	28903 Rancho California Rd	5541001	Gasoline Service Stations	H
Arco / 21st Century Oil - Front Comp	44987 Old Town Front St	5541004	Gasoline And Oil\Retail	H
Costco Wholesale #491	26610 Ynez Rd	5541004	Gasoline And Oil\Retail	H
Union 76 / Winchester Fuels Corp	40720 Winchester Rd	5541004	Gasoline And Oil\Retail	H
Empire Marine Inc	28780 Front St #C3- 5	5551001	Boat Dealers	H
Norm Reeves Acura	26705 Ynez Rd	5599001	Automotive Dealers, Not Elsewhere Classi	H
Norm Reeves Hyundai / Subaru	26799 Ynez Rd	5599001	Automotive Dealers, Not Elsewhere Classi	H
Richard Scott La Fleur	29910 Los Nogales Rd	5599001	Automotive Dealers, Not Elsewhere Classi	H
Saturn Of Temecula	27430 Ynez Rd	5599001	Automotive Dealers, Not Elsewhere Classi	H
Temecula Auto Sales	28781 Old Town Front St	5599001	Automotive Dealers, Not Elsewhere Classi	H
At Your Service Exterminators In	27574 Commerce Center Dr #13	7342001	Disinfecting And Pest Control Services	H
Bug Tech Exterminators Inc	32028 Via Bonilla	7342001	Disinfecting And Pest Control Services	H
Minnesang Pest Specialists	27636 Ynez # L 7-101	7342001	Disinfecting And Pest Control Services	H
South County Pest Control	31248 Eona Cr	7342001	Disinfecting And Pest Control Services	H
Terminix International	43234 Business Park Dr #101	7342001	Disinfecting And Pest Control Services	H
Vineyard Valley Pest Control	P O Box 821	7342001	Disinfecting And Pest Control Services	H
Archon Pest Control	28061 Jefferson Ave #4	7342007	Pest Control In Structures	H
Excel Rental Center	28115 Del Rio Rd #A	7353001	Heavy Construction Equipment Rental And	H
Neal Brothers Water Trucks	41515 Yorba Ave	7353001	Heavy Construction Equipment Rental And	H
Rental Service Corporation U S A	28377 Felix Valdez Rd	7353001	Heavy Construction Equipment Rental And	H
S L Moore Company	42070 Veneto Dr	7353003	Construction Equipment, Heavy: Rental An	H
Aloha Grading	40335 Winchester Rd #118	7359001	Equipment Rental And Leasing, Not Elsewh	H

CITY OF TEMECULA COMMERCIAL AND INDUSTRIAL FACILITIES LIST

(As of May 1, 2005)

FIRM NAME	ADDRESS	SIC NO	BUSINESS TYPE	PRIORITY
C J's Party Bounce	31215 Camino Verde	7359001	Equipment Rental And Leasing, Not Elsewh	H
Clinton W Waters	41158 Promenade Chardonnay Hills	7359001	Equipment Rental And Leasing, Not Elsewh	H
Doctos Choice	27574 Commerce Center Dr #133	7359001	Equipment Rental And Leasing, Not Elsewh	H
Ferguson Equipment Rental	27108 Quail Creek Ct	7359001	Equipment Rental And Leasing, Not Elsewh	H
J Co	28061 Jefferson Ave #7 B	7359001	Equipment Rental And Leasing, Not Elsewh	H
Minegar Laser Screed Rentals Inc	27705 Commerce Center	7359001	Equipment Rental And Leasing, Not Elsewh	H
Oasis Vending	29651 Amwood Way	7359001	Equipment Rental And Leasing, Not Elsewh	H
Orange Collision Equipment	41158 Promenade Chardonnay Hills	7359001	Equipment Rental And Leasing, Not Elsewh	H
Pacific Micro Rentals Inc	43135 Blackdeer Loop #A	7359001	Equipment Rental And Leasing, Not Elsewh	H
Pacific Water Truck Rentals	39370 Liefer Rd #11	7359001	Equipment Rental And Leasing, Not Elsewh	H
Pauley Equipment Of Temecula Inc	28374 Felix Valdez Rd	7359001	Equipment Rental And Leasing, Not Elsewh	H
Rebel Rents Inc	42188 Winchester Rd	7359001	Equipment Rental And Leasing, Not Elsewh	H
University In Room Safe Service	29775 Valle Olvera	7359001	Equipment Rental And Leasing, Not Elsewh	H
Y & T Transport	41696 Chablis Ct	7359001	Equipment Rental And Leasing, Not Elsewh	H
Z T I Enterprises	31965 Avenida Mallari	7359001	Equipment Rental And Leasing, Not Elsewh	H
Robert Bosch Tool Corp	42217 Rio Nedo #A-105	7359017	Tool Rental And Leasing	H
Autocenter Autobody	28710-B Las Haciendas #101	7532001	Top, Body, And Upholstery Repair Shops A	H
Inland Empire Cycles Custom	32855 Verona Ct	7532001	Top, Body, And Upholstery Repair Shops A	H
Maaco Auto Painting & Body Works	27561 Commerce Center Dr	7532001	Top, Body, And Upholstery Repair Shops A	H
Pro Auto Collision Inc	42011 Avenida Alvarado #C,D&E	7532001	Top, Body, And Upholstery Repair Shops A	H
Rancho Temecula Auto Painting	28696 Via Montezuma # 103	7532001	Top, Body, And Upholstery Repair Shops A	H
Franks Hot Rods Upholstery	27620 Commerce Center Dr St Bldg Un	7532001	Top, Body, And Upholstery Repair Shops A	H
Creekside Body Shop	28671 Calle Cortez #J	7532003	Automotive Body Shops	H
Liberty Collision Center	28093 Jefferson Ave	7532003	Automotive Body Shops	H
Line X Of Temecula Valley	28069 Diaz Rd # F	7532003	Automotive Body Shops	H
Nova / Advanced Auto Collision Inc	27590 Commerce Center Dr	7532003	Automotive Body Shops	H
Chaya's Auto Color	43796 Alcoba Dr	7532005	Automotive Paint Shops	H
Sweetwater Upholstery	43094 Via Dos Picos #C	7532011	Upholstery Repair, Automotive	H
Just Smog Test Only Center	28860 Front St #B 2	7533001	Automotive Exhaust System Repair Shops	H
Mufflers West Auto Service Inc	43119 Via Dos Picos	7533001	Automotive Exhaust System Repair Shops	H
Ranch Muffler & Truck Accessories Inc	27499 Commerce Ctr Dr #A,B,C	7533001	Automotive Exhaust System Repair Shops	H
Temecula Smog	27620 Commerce Ctr Dr #110	7533001	Automotive Exhaust System Repair Shops	H
Best For Less Tires	28733 Via Montezuma Un A	7534001	Tire Retreading And Repair Shops	H
Barneys Tire & Wheel Inc	27584 Commerce Center Dr	7534005	Tire Repair Shops	H
C S B & Ellison/Big O Tires #628	40525 Winchester Rd	7534005	Tire Repair Shops	H
Thompson's Discount Tire Center Inc	28007 Jefferson Ave #E	7534005	Tire Repair Shops	H
Auto Glass Pros/ Agp Inc	27511 Commerce Center Dr #B	7536001	Automotive Glass Replacement Shops	H
B & D Windshield Repair	43591 Tirano Dr	7536001	Automotive Glass Replacement Shops	H
Faith Auto Glass & Tinting	28860 Front St # C 6	7536001	Automotive Glass Replacement Shops	H

CITY OF TEMECULA COMMERCIAL AND INDUSTRIAL FACILITIES LIST

(As of May 1, 2005)

FIRM NAME	ADDRESS	SIC NO	BUSINESS TYPE	PRIORITY
Lowest Price Auto Glass	41860 Enterprise Circle So #C	7536001	Automotive Glass Replacement Shops	H
Dyno Trans Transmission	43186 Via Dos Picos #A1	7537001	Automotive Transmission Repair Shops	H
Temecula Auto Repair & Radiator Inc	43191 Rancho Way	7537001	Automotive Transmission Repair Shops	H
Temecula Diesel Auto Truck	43216 Via Dos Picos #B	7537001	Automotive Transmission Repair Shops	H
A R M Auto / Devlin	42011 Avenida Alvarado	7538001	General Automotive Repair Shops	H
Advanced Automotive	27860 Del Rio Rd	7538001	General Automotive Repair Shops	H
Agape Auto Repair Inc	43216 Via Dos Picos	7538001	General Automotive Repair Shops	H
Auto Care Experts	42295 Avenida Alvarado #1	7538001	General Automotive Repair Shops	H
Auto Center Automotive	28700 Las Haciendas #A	7538001	General Automotive Repair Shops	H
Auto Doctor	42255 Baldaray Cr	7538001	General Automotive Repair Shops	H
Automotive Specialties	41976 Avenida Alvarado	7538001	General Automotive Repair Shops	H
Cadillac G M Specialist	28671 Calle Cortez	7538001	General Automotive Repair Shops	H
Dial Automotive	43175 Blackdeer Loop	7538001	General Automotive Repair Shops	H
Fourth Street Automotive	41935 Fourth Street	7538001	General Automotive Repair Shops	H
Franz Mercedes Service & Repair	27585 Commerce Center Dr	7538001	General Automotive Repair Shops	H
Japanese Auto Specialty Inc	28730 Via Montezuma #101	7538001	General Automotive Repair Shops	H
Liberty Auto Center	28093 Jefferson St	7538001	General Automotive Repair Shops	H
Midas Of Temecula Inc	26677 Ynez Rd	7538001	General Automotive Repair Shops	H
Old Town Tire & Service	28700 Old Town Front St	7538001	General Automotive Repair Shops	H
Osborne Automotive Machine	27488 Enterprise Cr W #3	7538001	General Automotive Repair Shops	H
Precision Alignment & Brake	27860 Del Rio Rd #B	7538001	General Automotive Repair Shops	H
Rancho California Auto Collision	27535 Enterprise Circle West	7538001	General Automotive Repair Shops	H
Rass Auto Repair	28671 Calle Cortez	7538001	General Automotive Repair Shops	H
Rogers Automotive Specialist	43124 Rancho Wy	7538001	General Automotive Repair Shops	H
Ronnies Cooling Sys Specialists	28129 Jefferson Ave	7538001	General Automotive Repair Shops	H
The Pep Boys #800	40605 Winchester Rd	7538001	General Automotive Repair Shops	H
Toms Foreign Autohouse	27511 Commerce Center Dr #A2	7538001	General Automotive Repair Shops	H
Truck Auto Fleet Services	28733 Via Montezuma #H & I	7538001	General Automotive Repair Shops	H
Aamco Of Temecula	26671 Ynez Rd #A	7538002	Automotive Repair Shops, General	H
Advantage Automotive / Tomlin	28696 Via Montezuma #104	7538002	Automotive Repair Shops, General	H
All Valley Auto Care	28730 Via Montezuma #105	7538002	Automotive Repair Shops, General	H
Alltrohic Repair	27636 Ynez Rd #L 7-117	7538002	Automotive Repair Shops, General	H
Ask Terry	28733 Via Montezuma	7538002	Automotive Repair Shops, General	H
Carter's Car Care	41070 Via Del Toronjo	7538002	Automotive Repair Shops, General	H
Consultatech	28671 Calle Cortez #C	7538002	Automotive Repair Shops, General	H
Econo Lube N Tune #181	27685 Jefferson Ave	7538002	Automotive Repair Shops, General	H
Elite Automotive & Smog	27516 Commerce Center Dr # C	7538002	Automotive Repair Shops, General	H
Georges Certified Auto Repair	43094 Via Dos Picos #A	7538002	Automotive Repair Shops, General	H
Integrity Automotive	28730 Via Montezuma #103	7538002	Automotive Repair Shops, General	H

CITY OF TEMECULA COMMERCIAL AND INDUSTRIAL FACILITIES LIST

(As of May 1, 2005)

FIRM NAME	ADDRESS	SIC NO	BUSINESS TYPE	PRIORITY
Makestar Honda & Acura	28733 Via Montezuma	7538002	Automotive Repair Shops, General	H
Mark Sokach Mobile Auto	40125 Roshani Dr	7538002	Automotive Repair Shops, General	H
Mike's Family Automotive	27620 Commerce Center Dr #102	7538002	Automotive Repair Shops, General	H
My Tech Inc	42346 Rio Nedo St #G	7538002	Automotive Repair Shops, General	H
One Stop Brake Supply	28700 Las Haciendas #104-105	7538002	Automotive Repair Shops, General	H
Quality 1 Auto Service	42387 Avenida Alvarado #103	7538002	Automotive Repair Shops, General	H
Rancho Auto Service & Smog	27591 Commerce Center Drive	7538002	Automotive Repair Shops, General	H
Steve's Pro Kool	41976 Avenida Alvarado #A	7538002	Automotive Repair Shops, General	H
Superior Auto Repair	28733 Via Montezuma	7538002	Automotive Repair Shops, General	H
Affordable Auto & Truck Service	43271 Via Angeles	7539001	Automotive Repair Shops, Not Elsewhere C	H
All Day Smog & Tune	28730 Via Montezuma St #102	7539001	Automotive Repair Shops, Not Elsewhere C	H
Dan's Toyota & Lexus	43175 Sereno Dr	7539001	Automotive Repair Shops, Not Elsewhere C	H
Diversified Automotive	43094 Via Dos Picos #D	7539001	Automotive Repair Shops, Not Elsewhere C	H
Ed's Mobile Repair	31241 Comotilo Ct	7539001	Automotive Repair Shops, Not Elsewhere C	H
Express Tire #97	29095 Front St	7539001	Automotive Repair Shops, Not Elsewhere C	H
Golden State Smog & Auto Service Inc	27860 Del Rio Road #C	7539001	Automotive Repair Shops, Not Elsewhere C	H
M & M Tire Center	41670 Winchester Rd #A	7539001	Automotive Repair Shops, Not Elsewhere C	H
Ramona Tire Inc	40385 Winchester Rd	7539001	Automotive Repair Shops, Not Elsewhere C	H
Rancho Smog	43062 Via Dos Picos #A	7539001	Automotive Repair Shops, Not Elsewhere C	H
Temecula Radiator & Auto Repair #1	43191 Rancho Way	7539001	Automotive Repair Shops, Not Elsewhere C	H
The Stop Shop	28671 Calle Cortez #K	7539001	Automotive Repair Shops, Not Elsewhere C	H
Valley Autowerkes	28822 Old Town Front St #104	7539001	Automotive Repair Shops, Not Elsewhere C	H
Carburetor Exchange	28860 Front St #C	7539007	Carburetor Repair	H
J N C Mobile Installations	32934 Josheroo Ct	7539008	Electrical Service, Automotive (Battery	H
All Bright At Last - Car Wash	41941 Moreno Rd	7542001	Carwashes	H
Classic Auto Detailing	44733 Bananal	7542001	Carwashes	H
Diversified Commercial Cleaning Service	39460 Hilt Rd	7542001	Carwashes	H
Extreme Auto Wash	39835 Cantrell Rd	7542001	Carwashes	H
Eye Candy Auto Detail	44367 Kingston Dr	7542001	Carwashes	H
Guillermo Garcia's Mobile	42200 Margarita Rd #1310	7542001	Carwashes	H
Kealii O Kalani's	40575 Calif Oaks Rd #D2-259	7542001	Carwashes	H
Rancho Car Wash	27378 Jefferson Av	7542001	Carwashes	H
Superior Shine Mobile Detailing	44758 Longfellow Ave	7542001	Carwashes	H
Temecula Car Wash	29766 Rancho California Rd	7542001	Carwashes	H
A - 1 Auto	28696 Via Montezuma #104	7549001	Automotive Services, Except Repair And C	H
Hospitality Car Wash & Quick Lube	40495 Winchester Rd	7549001	Automotive Services, Except Repair And C	H
Jiffy Lube #1878	30690 Rancho California Rd	7549001	Automotive Services, Except Repair And C	H
Roberts Test Only Smog Check	28671 Calle Cortez #K	7549001	Automotive Services, Except Repair And C	H
Shell Rapid Lube	40915 Winchester Rd	7549001	Automotive Services, Except Repair And C	H

CITY OF TEMECULA COMMERCIAL AND INDUSTRIAL FACILITIES LIST

(As of May 1, 2005)

FIRM NAME	ADDRESS	SIC NO	BUSINESS TYPE	PRIORITY
Stop N Smog Test Only	43122 Via Dos Picos #C	7549001	Automotive Services, Except Repair And C	H
T V S Complete Auto Care Inc	28822 Front St #107-109	7549001	Automotive Services, Except Repair And C	H
Temecula Auto Wrecking & Towing Inc	41910 C Street	7549001	Automotive Services, Except Repair And C	H
Temecula Quick Lube	29764 Rancho Calif Rd	7549001	Automotive Services, Except Repair And C	H
Town & Country Towing	42250 Baldaray Cr #B	7549001	Automotive Services, Except Repair And C	H
Xpress Lube #21	40917 Winchester Rd	7549001	Automotive Services, Except Repair And C	H
Auto Center Towing	28710 Las Haciendas	7549010	Towing Service, Automotive	H
United Towing Service Inc	28093 Jefferson Ave	7549010	Towing Service, Automotive	H
Advanced Automotive Smog	42274 Rio Nedo Dr	7699001	Repair Shops And Related Services, Not E	H
J D Cnc Machine Repair	33455 Winston Way #B	7699001	Repair Shops And Related Services, Not E	H
Jose's Tractors	42387 Avenida Alvarado # 112	7699001	Repair Shops And Related Services, Not E	H
M 1 Racing Transaxle	27598 Commerce Center Drive	7699001	Repair Shops And Related Services, Not E	H
Temecula Motorcycle Service	41860 Enterprise Circle South #F	7699001	Repair Shops And Related Services, Not E	H
Valley Wide Small Engine Services	34390 Scotella Road	7699001	Repair Shops And Related Services, Not E	H
Millennium Motorsports	43084 Rancho Way #C	7699022	Engine Repair, Except Automotive	H
Empire Farrier Supply	26111 Ynez Rd #B13	7699024	Farriers (Blacksmith Shops)	H
Formby Racing	40192 Calle Medusa	7699049	Motorcycle Repair Service	H
Lanik Pumping Service	28822 Front St #210-B	7699068	Septic Tank Cleaning Service	H
Custom Masonry Designs	27575 Aralia Ct	1741001	Masonry, Stone Setting, And Other Stone	M
Hubinsky Custom Masonry	31950 Calle Ballentine	1741001	Masonry, Stone Setting, And Other Stone	M
B H Concrete Bruce Henry	40640 Calle Madero	1771001	Concrete Work	M
Glenn A Barfknecht	P O Box 639	1771001	Concrete Work	M
Nordees Concrete Company	42161 Southern Hills	1771001	Concrete Work	M
Rices Concrete Cutting	30040 Los Nogales Rd	1771001	Concrete Work	M
Rossi Concrete Inc	47423 Rainbow Canyon Rd	1771001	Concrete Work	M
Sedano Traffic Line Striping	46670 Sandia Creek Dr	1771001	Concrete Work	M
T R H / Timothy Ray Hole Concrete Cons	38970 Yuma Lane	1771001	Concrete Work	M
Asian Market Temecula Inc	26459 Ynez Rd #B	2099001	Food Preparations, Not Elsewhere Classif	M
Tortilleria Temecula	28780 Front St	2099001	Food Preparations, Not Elsewhere Classif	M
Cabinet Designs	42088 Rio Nedo #102	2434002	Cabinets, Wood: To Be Installed	M
Lexies II	40820 Winchester Rd #2460	3144006	Shoes, Women's: Except House Slippers, A	M
Shoetique	40820 Winchester Rd #2170	3144006	Shoes, Women's: Except House Slippers, A	M
Blackmore Co L L C	27840 Del Rio Road #A	3531001	Construction Machinery And Equipment	M
I Can Dig It!	30660 Milky Way Dr	3531007	Backhoes	M
Americrete Inc	41769 Enterprise Circle North #104	3531029	Distributors (Construction Machinery)	M
Insupco Inc	43379 Business Park Dr #200	3531029	Distributors (Construction Machinery)	M
Raul A Moreno Concrete Pumping	39649 Longridge Dr	3559010	Cement Making Machinery	M
Air Technologies	38880 Camino Sierra Rd	3634002	Air Purifiers, Portable	M
Fresh Air Company	40820 Winchester Rd	3634002	Air Purifiers, Portable	M

CITY OF TEMECULA COMMERCIAL AND INDUSTRIAL FACILITIES LIST

(As of May 1, 2005)

FIRM NAME	ADDRESS	SIC NO	BUSINESS TYPE	PRIORITY
Fiber Optic Lighting Associates	42937 Corte Abanilla	3648001	Lighting Equipment, Not Elsewhere Classi	M
Light F/X Unlimited	31440 Congressional Dr	3648001	Lighting Equipment, Not Elsewhere Classi	M
Vineyard Lighting Co	43943 Carentan Dr	3648001	Lighting Equipment, Not Elsewhere Classi	M
Bright Ideas & More	27620 Commerce Center Dr #H 1011	3648005	Flashlights	M
Transducer Techniques Inc	42480 Rio Nedo	3829001	Measuring And Controlling Devices, Not E	M
Advanced Cardiovascular / Guidant	26531 Ynez Rd	3841001	Surgical And Medical Instruments And App	M
A A Worms Inc	43062 Via Dos Picos	3999001	Manufacturing Industries, Not Elsewhere	M
A W S M Inc	30617 Calle Pina Colada	3999001	Manufacturing Industries, Not Elsewhere	M
Acrathon Precision Technologies Inc	26201 Ynez Rd # 102	3999001	Manufacturing Industries, Not Elsewhere	M
Advanced Extrusion Concepts	42309 Winchester Rd Bldg A #B	3999001	Manufacturing Industries, Not Elsewhere	M
Aligrand Corporation	44956 Trotsdale Dr	3999001	Manufacturing Industries, Not Elsewhere	M
Andy's Disc Silencer Inc	43114 Blackdeer Loop #B	3999001	Manufacturing Industries, Not Elsewhere	M
Aqua Ultraviolet	42371 Avenida Alvarado B	3999001	Manufacturing Industries, Not Elsewhere	M
Bostik Findley Inc	27460 Bostik Ct	3999001	Manufacturing Industries, Not Elsewhere	M
Enterprise Manufactured Homes	28363 Vincent Moraga	3999001	Manufacturing Industries, Not Elsewhere	M
Erik S Hostetter San & Gravel	33156 Corte Yala	3999001	Manufacturing Industries, Not Elsewhere	M
Extrusioneering Inc	41984 Rio Nedo #300	3999001	Manufacturing Industries, Not Elsewhere	M
Flowsolve U S Inc	27455 Tierra Alta Way	3999001	Manufacturing Industries, Not Elsewhere	M
Four Slide Engineering Inc	42585 Rio Nedo	3999001	Manufacturing Industries, Not Elsewhere	M
Fred Johnson Mechanical	30030 La Primavera St	3999001	Manufacturing Industries, Not Elsewhere	M
Generic Manufacturing Corp	27555 Commerce Center Dr	3999001	Manufacturing Industries, Not Elsewhere	M
Hybrid Solutions	32202 Placer Belaire	3999001	Manufacturing Industries, Not Elsewhere	M
Intense Cycles Inc	42380 Rio Nedo	3999001	Manufacturing Industries, Not Elsewhere	M
Kirsten King	31357 Pahuta St	3999001	Manufacturing Industries, Not Elsewhere	M
Mil O Matic	27886 Del Rio Rd	3999001	Manufacturing Industries, Not Elsewhere	M
N / C Industries	42147 Roick Drive	3999001	Manufacturing Industries, Not Elsewhere	M
Nexgen Hardware Solutions	43656 Buckeye Rd	3999001	Manufacturing Industries, Not Elsewhere	M
Oreq Corporation	42306 Remington Ave	3999001	Manufacturing Industries, Not Elsewhere	M
Precision Powder Coating	27610 Commerce Center Dr	3999001	Manufacturing Industries, Not Elsewhere	M
Raw Motorsports	27610 Commerce Center Dr #101	3999001	Manufacturing Industries, Not Elsewhere	M
Ryer Inc	42625 Rio Ned # B	3999001	Manufacturing Industries, Not Elsewhere	M
Safety Systems Technology Inc	43280 Business Park Dr #106	3999001	Manufacturing Industries, Not Elsewhere	M
Seville Display Doors	27495 Diaz Rd	3999001	Manufacturing Industries, Not Elsewhere	M
Solid State Stamping Inc #2	42580 Rio Nedo	3999001	Manufacturing Industries, Not Elsewhere	M
Southern California Distribution	27421 Bolandra Ct	3999001	Manufacturing Industries, Not Elsewhere	M
Stay Laboratories LLC	29940 Avenida Cima Del Sol	3999001	Manufacturing Industries, Not Elsewhere	M
Swiech Communication Systems	32979 Regina Dr	3999001	Manufacturing Industries, Not Elsewhere	M
The Bookbutton Company	39255 Grassy Rd	3999001	Manufacturing Industries, Not Elsewhere	M
The Scotts Company / Temecula	42375 Remington Ave	3999001	Manufacturing Industries, Not Elsewhere	M

CITY OF TEMECULA COMMERCIAL AND INDUSTRIAL FACILITIES LIST

(As of May 1, 2005)

FIRM NAME	ADDRESS	SIC NO	BUSINESS TYPE	PRIORITY
Unique Precision Industries	27649 Commerce Center Dr	3999001	Manufacturing Industries, Not Elsewhere	M
V & T Tooling	42420 Winchester Rd	3999001	Manufacturing Industries, Not Elsewhere	M
White Cap Industries Inc	28065 Diaz Rd	3999001	Manufacturing Industries, Not Elsewhere	M
Brandel Masonry Supplies	42368 Rio Nedo	5032001	Brick, Stone, And Related Construction M	M
Cemex Construction Materials L P	29065 Front St	5032001	Brick, Stone, And Related Construction M	M
Dal Tile Corporation	43169 Via Dos Picos #A	5032001	Brick, Stone, And Related Construction M	M
Polo Group International	42309 Winchester Rd #C	5032014	Granite Building Stone\Wholesale	M
Paint Palace Plus	43052 Teramo St	5032021	Plaster\Wholesale	M
Bangkok Chef	27451 Jefferson Av	5812001	Eating Places	M
Banzai Japanese	27533 Jefferson Av	5812001	Eating Places	M
Black Angus Restaurant	27735 Ynez Rd	5812001	Eating Places	M
Burger King #9801	30534 Rancho California Rd	5812001	Eating Places	M
Captains Cabin	28551 Rancho California Rd	5812001	Eating Places	M
Carls Jr #1023	30660 Rancho California Rd	5812001	Eating Places	M
Carls Jr #791	41195 Winchester Rd	5812001	Eating Places	M
Carls Jr #818	44515 Bedford Ct	5812001	Eating Places	M
Claim Jumper Restaurant	29450 Rancho California Rd	5812001	Eating Places	M
Coco's Bakery Restaurant #6003	26495 Ynez Rd	5812001	Eating Places	M
Culinary Artistry Inc / The Vineyard	33515 Rancho California Rd	5812001	Eating Places	M
Dairy Queen At Redhawk	31845 Hwy 79 C	5812001	Eating Places	M
Del Taco #395	27445 Jefferson Ave	5812001	Eating Places	M
Dennys Restaurant #1947	28915 Rancho California Rd	5812001	Eating Places	M
Dominos Pizza	28276 Front St	5812001	Eating Places	M
El Pollo Loco #3337	27375 Jefferson Av	5812001	Eating Places	M
El Rancho Nuevo	27465 Jefferson Ave	5812001	Eating Places	M
Ernie B's Worlds Greatest Hogies	27542 Jefferson Av Un B1	5812001	Eating Places	M
Filippis Pizza Grotto	27309 Jefferson Ave #110	5812001	Eating Places	M
Fujiyama Steak House	30680 Rancho Calif 601 602	5812001	Eating Places	M
Guadalajara Grill Restaurant	27780 Front St #1	5812001	Eating Places	M
In N Out Burger #62	27684 Jefferson Av	5812001	Eating Places	M
Jack In The Box Inc #3364	40412 Winchester Rd	5812001	Eating Places	M
Jack In The Box Inc #48	27410 Jefferson Ave	5812001	Eating Places	M
Little Caesars Pizza / K Mart #3828	26471 Ynez Rd	5812001	Eating Places	M
Little Chung King	27371 Jefferson Av	5812001	Eating Places	M
Mad Madelines Grill	28495 Front St #A	5812001	Eating Places	M
Mc Donalds	28100 Front St	5812001	Eating Places	M
Mc Donalds #18171	40465 Winchester Rd	5812001	Eating Places	M
Mc Donalds #20164	31853 State Hwy 79 So	5812001	Eating Places	M
Mexicana Restaurant	41125 Winchester Rd	5812001	Eating Places	M

CITY OF TEMECULA COMMERCIAL AND INDUSTRIAL FACILITIES LIST

(As of May 1, 2005)

FIRM NAME	ADDRESS	SIC NO	BUSINESS TYPE	PRIORITY
Mexico Chiquito Rest & Cantina	41841 Moreno Rd	5812001	Eating Places	M
My Buddies Pizza	29760 Rancho Calif Rd #110	5812001	Eating Places	M
Nihon Restaurant	27576 Ynez Rd #H15	5812001	Eating Places	M
Pat & Oscar's	29375 Rancho California Rd	5812001	Eating Places	M
Penfold Farms	28545 Old Town Front St	5812001	Eating Places	M
Penfolds Cafe & Bakery	28250 Old Town Front St	5812001	Eating Places	M
Peonys Chinese Cuisine	30520 Rancho Calif Rd #A101-102	5812001	Eating Places	M
Prestos Inc	30590 Rancho Calif Rd #C303	5812001	Eating Places	M
R J's Sizzlin Steer Inc	27645 Jefferson Av #106	5812001	Eating Places	M
Richies Real American Diner #103	27313 Jefferson Av	5812001	Eating Places	M
Rosas Cantina	28636 Old Town Front St #109	5812001	Eating Places	M
Sizzler Restaurant	27717 Jefferson Av	5812001	Eating Places	M
Stadium Pizza	27314 Jefferson Ave #1	5812001	Eating Places	M
Submarina	26491 Ynez Rd #T	5812001	Eating Places	M
Swing Inn Cafe	28676 Old Town Front St	5812001	Eating Places	M
Temecula Pizza Company Inc	44535 Bedford Court #D	5812001	Eating Places	M
Temecula Taqueria	41958 5th St	5812001	Eating Places	M
Texas Lils Mesquite Grill	28495 Old Town Front St	5812001	Eating Places	M
The Bank Of Mexican Food	28645 Old Town Front St	5812001	Eating Places	M
The Caterers Cafe	43357 Business Park Dr Un 103	5812001	Eating Places	M
The Sweet Bean Of Temecula Inc	30590 Rancho Calif Rd #302	5812001	Eating Places	M
Veras Italian Restaurant	27326 Jefferson Ave #17	5812001	Eating Places	M
Yellow Basket Of Temecula LLC	40575 Winchester Rd	5812001	Eating Places	M
Starbucks Coffee #5695	40695 Winchester Rd	5812006	Cafes	M
Dave's Lil' Orbits Donuts II	40705 Calle Vecina	5812010	Coffee Shops	M
Madlin's Coffee House	27625 Jefferson Ave #103	5812010	Coffee Shops	M
Olivera's Coffee & Juice Bar	43049 Margarita Rd #101	5812010	Coffee Shops	M
Burger King #13109	40520 Winchester Road	5812019	Fast Food Restaurants	M
Carl's Jr	40820 Winchester Rd #Fc2	5812019	Fast Food Restaurants	M
Dalia's Pizza #8	27371 Jefferson Ave #S	5812019	Fast Food Restaurants	M
El Ranchito Taco Shop	40335 Winchester Rd #F	5812019	Fast Food Restaurants	M
Fuzion Java & Juice	41257 Margarita Rd #B 101	5812019	Fast Food Restaurants	M
Jack In The Box Inc #3391	32055 Highway 79 S E	5812019	Fast Food Restaurants	M
Kentucky Fried Chicken-Roach	41850 Moreno Rd	5812019	Fast Food Restaurants	M
Mc Donald's / Little Canyon Ranch Inc	Highway 79 South	5812019	Fast Food Restaurants	M
Panda Express #511	40820 Winchester Rd #F C-5	5812019	Fast Food Restaurants	M
Phillys Best	41269 Magarita Rd #104	5812019	Fast Food Restaurants	M
Subway Sandwich #30968	40315 Winchester Rd #C	5812019	Fast Food Restaurants	M
Take A Break Service #2	41915 Business Park Dr	5812019	Fast Food Restaurants	M

CITY OF TEMECULA COMMERCIAL AND INDUSTRIAL FACILITIES LIST

(As of May 1, 2005)

FIRM NAME	ADDRESS	SIC NO	BUSINESS TYPE	PRIORITY
Wienerschnitzel Hungry Howies	29105 Front St	5812019	Fast Food Restaurants	M
Mercy's Filipino Desserts	31940 Hwy 79 South #C3	5812021	Food Service, Institutional	M
Quizno's Classic Subs #1	40705 Winchester Rd #7	5812021	Food Service, Institutional	M
32 Italian Ices	31685-31845 Highway 79 South	5812022	Frozen Custard Stands	M
Goeatydog	35480 Calle Campo	5812025	Hot Dog (Frankfurter) Stands	M
Mc Dog's & Brats	41087 Promenade Chardonnay Hills	5812025	Hot Dog (Frankfurter) Stands	M
Cold Stone Creamery #105	40688 Winchester Rd #B	5812026	Ice Cream Stands	M
Michael's Pizza	43053 Margarita Rd #B-101	5812033	Pizza Parlors	M
My Buddies Pizza #109	29760 Rancho Calif Rd #109	5812033	Pizza Parlors	M
Papa Johns Pizza	30590 Rancho Calif Rd #307	5812033	Pizza Parlors	M
Red Brick Pizza	32195 State Highway 79 #B	5812033	Pizza Parlors	M
Stadium Pizza L L C	31950 Highway 79 South #B2	5812033	Pizza Parlors	M
Raja Enterprises Inc	28276 Front St	5812034	Pizzerias	M
5 & Diner Temecula	26460 Ynez Rd	5812036	Restaurants	M
Akamoo's Island Sushi	29760 Rancho Calif Rd	5812036	Restaurants	M
Albertos Mexican Food #2	31940 Hwy 79 South #C4	5812036	Restaurants	M
Aloha Joes	27495-97 Ynez Road	5812036	Restaurants	M
Amerikhan Mongolian Grill	40820 Winchester Rd #1750	5812036	Restaurants	M
Anthony's Ristorante	40335 Winchester Rd	5812036	Restaurants	M
Applebee's Neighborhood	32175 Highway 79 South	5812036	Restaurants	M
Arby's	27702 Jefferson	5812036	Restaurants	M
Baily Wine Country Cafe	27644 Ynez Rd #M11	5812036	Restaurants	M
Bayou Kitchen	27470 Jefferson # A2	5812036	Restaurants	M
Bernie's Cafe & Deli / Lang	27535 Jefferson Ave	5812036	Restaurants	M
Billy B's Famous Chiliburgers	27300 A Jefferson Ave	5812036	Restaurants	M
Burger King #14276	32110 Highway 79 South #D	5812036	Restaurants	M
California Grill	27345 Jefferson Ave	5812036	Restaurants	M
California Pizza Kitchen	40820 Winchester Rd #1000	5812036	Restaurants	M
Chilis Grill & Bar #282 Temecula	27645 Ynez Rd	5812036	Restaurants	M
China Super Buffet Inc	27624 Jefferson Ave	5812036	Restaurants	M
Chuys Mesquite Broiler	31940 Hwy 79 So #C-1	5812036	Restaurants	M
City Walk Restaurant	27590 Jefferson Ave	5812036	Restaurants	M
Country Garden Restaurant & Bakery	29000 Front St	5812036	Restaurants	M
Daphne's Greek Cafe	40820 Winchester Rd #1020	5812036	Restaurants	M
El Ranchito Taco Shop #2	33195 Highway 79 South #G	5812036	Restaurants	M
El Taconazo	26491 Ynez Rd	5812036	Restaurants	M
European Deli & Catering #2	28410 Old Town Front St #112-1112a	5812036	Restaurants	M
Farmer Boys Restaurant	41700 Winchester Rd	5812036	Restaurants	M
Fish House Vera Cruz	26700 Ynez Rd	5812036	Restaurants	M

CITY OF TEMECULA COMMERCIAL AND INDUSTRIAL FACILITIES LIST

(As of May 1, 2005)

FIRM NAME	ADDRESS	SIC NO	BUSINESS TYPE	PRIORITY
Godfather's Pizza	26479 Ynez Rd	5812036	Restaurants	M
Gourmet Italia	27499 Ynez Rd	5812036	Restaurants	M
Great Panda Oriental Cuisine	31940 Hwy 79 So #C3	5812036	Restaurants	M
Green Burrito #51	30680 Rancho Calif Rd	5812036	Restaurants	M
Hogi Yogi	27480 Ynez Rd #O-1	5812036	Restaurants	M
Hometown Buffet	40390 Margarita Rd	5812036	Restaurants	M
International Fast Food	23317 Jefferson Ave	5812036	Restaurants	M
Iron Wok China Bistro	26520 Ynez Rd	5812036	Restaurants	M
Johnny Carino's	26478 Ynez Rd	5812036	Restaurants	M
Julliano's Delicatessen	43053 Margarita Rd #105	5812036	Restaurants	M
Kentucky Fried Chicken-Roach	42197 Margarita Road	5812036	Restaurants	M
Killer Foods Inc	41269 Margarita Rd Bldg G #109	5812036	Restaurants	M
La Salsa #126 / La Salsa Inc	26550 Ynez Rd # A	5812036	Restaurants	M
Little Ceasars Pizza / Heuver	29700 Rancho Calif Rd	5812036	Restaurants	M
Los Amigos Taco Shop	41925 Motor Cary Parkway	5812036	Restaurants	M
Love Boat Sushi Bar	26480 Ynez Rd #3	5812036	Restaurants	M
Main Street Substation	41971 Main St	5812036	Restaurants	M
Marie Calendars Restaurant	29363 Rancho California Rd	5812036	Restaurants	M
Mekong River Restaurant	41377 Margarita Rd #108	5812036	Restaurants	M
Mimi's Cafe	40825 Winchester Rd	5812036	Restaurants	M
Misato	41915 Motor Car Pkwy #D & E	5812036	Restaurants	M
Nick's Super Burger Mexican Food	28120 Front St #A 101	5812036	Restaurants	M
Nipa Hut Restaurant	27536 Ynez Rd #F21	5812036	Restaurants	M
On The Border Mexican Grill & Cantina	40868 Winchester Rd	5812036	Restaurants	M
Original Pancake House	41377 Margarita Rd #101	5812036	Restaurants	M
Original Roadhouse Grill	26440 Ynez Rd	5812036	Restaurants	M
Osteria Toscana	32240 Hwy 79 South	5812036	Restaurants	M
Outback Steakhouse	40275 Winchester Rd	5812036	Restaurants	M
Panda Express #645	29530 Rancho California Rd	5812036	Restaurants	M
Panda Express #834	32195 Highway 79 South # C	5812036	Restaurants	M
Panda Express #956	40620 Winchester Rd	5812036	Restaurants	M
Pho Mai Vietnamese Gourmet	26487 Ynez Rd #H	5812036	Restaurants	M
Pick Up Stix Inc	40315 Winchester Rd #D	5812036	Restaurants	M
Pick Up Stix Temecula	32240 Highway 79 South	5812036	Restaurants	M
Pizza Hut Of Southeast Kansas Inc-1	29740 Rancho Calif Rd #A	5812036	Restaurants	M
Red Brick Pizza	26550 Ynez Rd #C	5812036	Restaurants	M
Red Ginger Inc	40405 Winchester Rd #101	5812036	Restaurants	M
Red Robin International Inc	40820 Winchester Rd #1070	5812036	Restaurants	M
Redhawk Pizza Factory	31725 Hwy 79 South	5812036	Restaurants	M

CITY OF TEMECULA COMMERCIAL AND INDUSTRIAL FACILITIES LIST

(As of May 1, 2005)

FIRM NAME	ADDRESS	SIC NO	BUSINESS TYPE	PRIORITY
Rhythm & Brews	41915 Third St	5812036	Restaurants	M
Richies Real American Diner #104	32150 Highway 79 South	5812036	Restaurants	M
Rocky Cola Cafe / Struhl	27405 Jefferson Ave	5812036	Restaurants	M
Romano's Macaroni Grill	41221 Margarita Rd #A	5812036	Restaurants	M
Rosa's Cafe & Tortilla Factory	28134 Jefferson Ave	5812036	Restaurants	M
Round Table	274644 Ynez Rd	5812036	Restaurants	M
Royal Panda Partnership Et Al	33195 Highway 79 South #E	5812036	Restaurants	M
Rubio's Fresh Mexican Grill	27480 Ynez Rd	5812036	Restaurants	M
Rubio's Fresh Mexican Grill	32180 Highway 79 South	5812036	Restaurants	M
Saigon Noodle House	27523 Jefferson Ave	5812036	Restaurants	M
Sammy's Woodfired Pizza	40820 Winchester Rd #1050	5812036	Restaurants	M
Scarcellas Italian Grill	27525 Ynez Rd	5812036	Restaurants	M
Skewers Thai B B Q	41125 Winchester Rd #B 9	5812036	Restaurants	M
Souplantation	26420 Ynez Rd	5812036	Restaurants	M
Sushi Camp	32240 Highway 79 South #104	5812036	Restaurants	M
Sushi Gin	26489 Ynez Rd #D	5812036	Restaurants	M
Sushi House	27725 Jefferson Ave #104	5812036	Restaurants	M
T G I Fridays	40830 Winchester Rd	5812036	Restaurants	M
Taste Of India	27715 Jefferson Ave #106	5812036	Restaurants	M
Temecula Oggis Pizza & Brewing Co	41301 Margarita Rd	5812036	Restaurants	M
Teriyaki Temple	40820 Winchester Rd	5812036	Restaurants	M
Texas Loosey's Chili Parlour & Saloon	27483 Ynez Rd	5812036	Restaurants	M
Thai Kitchen Restaurant / Petersen	27520 Ynez Rd #C 1	5812036	Restaurants	M
The Grill Room	41687 Temeku Dr	5812036	Restaurants	M
Tony Roma's	27464 Jefferson Ave	5812036	Restaurants	M
Twinnerys Mexican Cafe	27470 Commerce Center Dr	5812036	Restaurants	M
Vince's Spaghetti Express	28145 Jefferson Ave	5812036	Restaurants	M
Yokozuna Sushie	44535 Bedford Court #F	5812036	Restaurants	M
Albertos Mexican Food #3	40720 Winchester Rd	5812037	Restaurants, Carry-Out	M
Carls Jr #1410	33125 Highway 79	5812037	Restaurants, Carry-Out	M
Crazy Reb's	41790 Winchester Rd # F	5812037	Restaurants, Carry-Out	M
Dragon Express	29588 Rancho Calif Rd #K 11	5812037	Restaurants, Carry-Out	M
Imperial Wok	41925 Motor Car Pkwy #G	5812037	Restaurants, Carry-Out	M
Pizza Hut Of Southeast Kansas Inc-2	33195 Hwy 79 South #D	5812037	Restaurants, Carry-Out	M
Costco Wholesale Food Court	26610 Ynez Rd	5812038	Restaurants, Fast Food	M
Del Taco #835 / Del Taco Inc	40375 Winchester Rd	5812038	Restaurants, Fast Food	M
Friends & Neighbors Cafe	28326 Front St.	5812038	Restaurants, Fast Food	M
Hot Dog On A Stick / H D O S Enterprises	40820 Winchester Rd #F C 4	5812038	Restaurants, Fast Food	M
Rancho Grande Mexican Food	27911 Jefferson St #101	5812038	Restaurants, Fast Food	M

CITY OF TEMECULA COMMERCIAL AND INDUSTRIAL FACILITIES LIST

(As of May 1, 2005)

FIRM NAME	ADDRESS	SIC NO	BUSINESS TYPE	PRIORITY
Siggy's Restaurant	31970 Highway 79 South	5812038	Restaurants, Fast Food	M
Subway Sandwich #30066	27315 Jefferson Ave #C & D	5812038	Restaurants, Fast Food	M
Sweet Lumpy's B B Q L L C	28464 Old Front St # A	5812038	Restaurants, Fast Food	M
Taco Bell #17984	31677 Hwy 79 South	5812038	Restaurants, Fast Food	M
Taco Bell #19515	41005 Winchester Rd	5812038	Restaurants, Fast Food	M
Take A Break Service #1	26531 Ynez Rd	5812038	Restaurants, Fast Food	M
Wendy's / Coastline Food Service	27672 Jefferson Ave	5812038	Restaurants, Fast Food	M
Campini's Italian Deli	28860 Front St #A1	5812039	Sandwich Bars Or Shops	M
Quizno's Classic Subs #2	40820 Winchester Rd #F C7	5812039	Sandwich Bars Or Shops	M
Beacon Lounge Inc	27725 Jefferson Ave #1	5813001	Drinking Places (Alcoholic Beverages)	M
E Ts Sports Lounge	27423 Jefferson Av	5813001	Drinking Places (Alcoholic Beverages)	M
Milano's Liquor	27911 Jefferson Ave #109	5813001	Drinking Places (Alcoholic Beverages)	M
Temecula Stampede	28721 Old Town Front St	5813001	Drinking Places (Alcoholic Beverages)	M
Allan Power Clean	32912 Sotelo Dr	7217001	Carpet And Upholstery Cleaning	M
American Carpet Cleaners	45043 Corte Alegria	7217001	Carpet And Upholstery Cleaning	M
American Carpet Company	31557 Calle Los Padres	7217001	Carpet And Upholstery Cleaning	M
C & J Carpet Cleaning	44539 Tobias Circle	7217001	Carpet And Upholstery Cleaning	M
Environmental Steam Cleaning	27577 Commerce Center Dr	7217001	Carpet And Upholstery Cleaning	M
Hector & Chelly's	30760 Branford Dr	7217001	Carpet And Upholstery Cleaning	M
Hilbrands Carpet Care	30685 Milky Way Dr	7217001	Carpet And Upholstery Cleaning	M
J C Cleaning	33158 Via Alvaro	7217001	Carpet And Upholstery Cleaning	M
Mission Professional Cleaning Systems	40348 Calle Medusa	7217001	Carpet And Upholstery Cleaning	M
Peterson's Carpet Care	44385 Via Barranca	7217001	Carpet And Upholstery Cleaning	M
Pulido Cleaning & Restoration	27475 Ynez Rd P M B #427	7217001	Carpet And Upholstery Cleaning	M
Qualserv Carpet & Upholstery	27439 Rosebay Ct	7217001	Carpet And Upholstery Cleaning	M
Servicemaster Total Restoration	42346 Rio Nedo #A	7217001	Carpet And Upholstery Cleaning	M
Steam Superior Carpet Upholstery	27315 Jefferson Ave # J36	7217001	Carpet And Upholstery Cleaning	M
Tallys Carpet / Upholstery Cleaning Inc	40493 Yardley Ct	7217001	Carpet And Upholstery Cleaning	M
Victory Chem Dry & Emergency Serv	42220 Agena St	7217001	Carpet And Upholstery Cleaning	M
Pro Clean Carpet / Upholstery Cleaning	27612 Sonora Circle	7217003	Carpet Cleaning On Customers' Premises	M
Advantage Chem-Dry	29172 Vallejo Ave	7217006	Upholstery Cleaning On Customers' Premis	M
Anything Maintenance	27185 Rainbow Creek Dr	782001	Lawn And Garden Services	L
Benny's Landscaping	29673 Avenida De Calzada Dr	782001	Lawn And Garden Services	L
C F A Landscape & Maintenance	44781 Corte Nautia	782001	Lawn And Garden Services	L
C J's Lawn Service	32218 Corte Carmela	782001	Lawn And Garden Services	L
Clark's Lawn Service	41847 Humber Dr	782001	Lawn And Garden Services	L
Clear Water Landscaping	32871 Abana Ct	782001	Lawn And Garden Services	L
Complete Services	43191 Jamara Ct	782001	Lawn And Garden Services	L
Creative Landscape & Design	43656 Altamura Ct	782001	Lawn And Garden Services	L

CITY OF TEMECULA COMMERCIAL AND INDUSTRIAL FACILITIES LIST

(As of May 1, 2005)

FIRM NAME	ADDRESS	SIC NO	BUSINESS TYPE	PRIORITY
Curb Creations	30220 Del Rey Road	782001	Lawn And Garden Services	L
Daniel Marshall Landscaping Design	31150 Camino Del Este	782001	Lawn And Garden Services	L
Down To Earth Yard Care	43470 Tylman St	782001	Lawn And Garden Services	L
E Z Lawn Care & Landscape	43432 Fassano Ct	782001	Lawn And Garden Services	L
Evergreen Landscape Maintenance	29765 Windwood Circle	782001	Lawn And Garden Services	L
Executive Landscaping	34355 De Portola Rd	782001	Lawn And Garden Services	L
Gomez Landscaping	41230 Via Agila	782001	Lawn And Garden Services	L
Green Thumb	30562 Hollyberry Ln	782001	Lawn And Garden Services	L
Gregorio Vasquez Tello	31147 Camino Del Este	782001	Lawn And Garden Services	L
Gregorio's Tree Trimming	28837 Pujol St #76	782001	Lawn And Garden Services	L
Independent Discing / Mowing	42981 Corte Colucci	782001	Lawn And Garden Services	L
Jim Lemier Gardening Services	31976 Corte Montoya	782001	Lawn And Garden Services	L
Jose Alegria Landscape	29620 Deal Ct	782001	Lawn And Garden Services	L
L M Landscaping Service	39150 Rising Hill Dr	782001	Lawn And Garden Services	L
Landscape And More	38575 Calle Segovia	782001	Lawn And Garden Services	L
M & E Tree Service	39816 Oak Cliff Dr	782001	Lawn And Garden Services	L
Mark N Morand My Yard Man	42257 Camino Romo	782001	Lawn And Garden Services	L
Martin Sandoval Lawn Maintenance	42947 Corte Cabello	782001	Lawn And Garden Services	L
Mesek Landscape Service	40352 Chantemar Way	782001	Lawn And Garden Services	L
Morales Maintenance	42080 Cosmic Dr	782001	Lawn And Garden Services	L
Moreno Garden Landscape	42767 Twilight Ct	782001	Lawn And Garden Services	L
Rafael Romero Z	31203 Camino Del Este	782001	Lawn And Garden Services	L
Rosendo Martinez Landscape Maintenance	28801 Pujol St #18	782001	Lawn And Garden Services	L
S & S Landscaping	27632 Parkside Dr	782001	Lawn And Garden Services	L
Shepards Gardening Services	29820 Avenida Cima Del Sol	782001	Lawn And Garden Services	L
Sprinkler Scape	31877 Calle Redondela	782001	Lawn And Garden Services	L
Temecula Lawn Care	P O Box 890582	782001	Lawn And Garden Services	L
Temecula Plantscape	41333 Salt River Ct	782001	Lawn And Garden Services	L
U - K Landscape	30612 E Loma Linda	782001	Lawn And Garden Services	L
Victor Sanchez Landscaping	39617 Long Ridge Dr	782001	Lawn And Garden Services	L
Jose Gubel Lopez Arreola	42200 Moraga Road # 21 C	782004	Garden Maintenance	L
Rafael Romero Torres	41656 Zinfandel Ave	782004	Garden Maintenance	L
Curb Scape Creations	44858 Corte Sevrina	782006	Lawn Care	L
Discount Lawn Care	31952 Calle Espinoza	782006	Lawn Care	L
A & M Professional Landscape	39535 Spanish Oaks Dr	782008	Lawn Mowing Services	L
D & S Lawn Aeration & Maintenance	32497 Galatina St	782008	Lawn Mowing Services	L
Redhawk Gardening	45632 Corte Montril	782008	Lawn Mowing Services	L
Rolling Knolls Landscaping	46525 De Portola Rd	782008	Lawn Mowing Services	L
Jose Solano	44820 Calle Banuelos	783005	Tree Trimming For Public Utility Lines	L

CITY OF TEMECULA COMMERCIAL AND INDUSTRIAL FACILITIES LIST

(As of May 1, 2005)

FIRM NAME	ADDRESS	SIC NO	BUSINESS TYPE	PRIORITY
Juice Bar	27520 Ynez Rd #D1	2033014	Juices, Fresh: Fruit Or Vegetable	L
Surf City Squeeze	40820 Winchester Road #K1	2033014	Juices, Fresh: Fruit Or Vegetable	L
Downs Commercial Fueling Inc	27985 Diaz Rd	5172013	Petroleum Brokers\Wholesale	L
Blyth Homescents Intl / Admin Office	27455 Tierra Alta Way #B	5193001	Flowers, Nursery Stock, And Florists' Su	L
Deans Wholesale Flowers	28373 Felix Valdez Rd Un A3	5193001	Flowers, Nursery Stock, And Florists' Su	L
Noltre Nursery Services	43531 Calle Carabana	5193001	Flowers, Nursery Stock, And Florists' Su	L
North County Greenhouse	39611 Liefer Rd	5193001	Flowers, Nursery Stock, And Florists' Su	L
Summer Rose	28248 Tierra Vista Rd	5193001	Flowers, Nursery Stock, And Florists' Su	L
A S Y Trading Inc	43623 Altamura Ct	5193003	Flowers And Florists' Supplies\Wholesale	L
Box Enterprises Inc	33347 Elizabeth Rd	5193005	Flowers, Fresh\Wholesale	L
Wine Country Flower Farm	36580 Rancho Calif Rd	5193007	Plants, Potted\Wholesale	L
L & M Fertilizer Inc	28690 Las Haciendas St	5261001	Retail Nurseries, Lawn And Garden Supply	L
Baco's Garden	42200 Moraga Rd #35-H	5261003	Garden Supplies And Tools\Retail	L
Hydroponics - 4 - Less	41669 Winchester Rd #104	5261003	Garden Supplies And Tools\Retail	L
The Painted Garden I	28659 Old Town Front	5261003	Garden Supplies And Tools\Retail	L
Uniquely Yours / Bellisimo	32112 Camino Rabago	5261003	Garden Supplies And Tools\Retail	L
Temecula Garden & Power	28860 Front St #C3	5261004	Lawnmowers\Retail	L
Get Palms	31900 Calle Chapos	5261005	Nursery Stock, Seeds And Bulbs\Retail	L
T & R Nursery	36298 Glenn Oaks Rd	5261005	Nursery Stock, Seeds And Bulbs\Retail	L
Morgans Pool Service	45342 Maguey Ct	7389001	Business Services, Not Elsewhere Classif	L
Professional Pool Service	31668 Pio Pico Rd	7389001	Business Services, Not Elsewhere Classif	L
Complete Embroidery Designs	43154 Via Dos Picos # D	7389038	Embroidering Of Advertising On Shirts, E	L
Emblematik Inc	42143 Avenida Alvarado #C2	7389038	Embroidering Of Advertising On Shirts, E	L
Showtime Stitched Apparel	32025 Camino Herencia	7389038	Embroidering Of Advertising On Shirts, E	L
Stitch Guys	43143 Bassano Dr	7389038	Embroidering Of Advertising On Shirts, E	L
All Safe Fire Extinguisher Co	30130 Del Rey Road	7389043	Fire Extinguishers, Service Of	L
Temecula Valley Fire Equipment Company	26111 Ynez Rd #B19	7389043	Fire Extinguishers, Service Of	L
A Better Pool Service & Repair	43091 Camino Caruna	7389114	Swimming Pool Cleaning And Maintenance	L
All About The Customer Pool Service	P O Box 891961	7389114	Swimming Pool Cleaning And Maintenance	L
All American Pool And Spa Service	45346 Callesito Burgas	7389114	Swimming Pool Cleaning And Maintenance	L
Chris' Pool Care	29760 Pasada Rd	7389114	Swimming Pool Cleaning And Maintenance	L
Danny's Pool Service	45758 Corte Rodrigo	7389114	Swimming Pool Cleaning And Maintenance	L
David Molstre Pool Service	44083 Quiet Meadow Rd	7389114	Swimming Pool Cleaning And Maintenance	L
Dive In Pool Service Inc	44660 Thatcher Court	7389114	Swimming Pool Cleaning And Maintenance	L
Freedom Pool Service Inc	32548 Angelo Dr	7389114	Swimming Pool Cleaning And Maintenance	L
Hurricane Pools & Spas	42815 Twilight Court	7389114	Swimming Pool Cleaning And Maintenance	L
John-Paul A Hannum P P S I I	31665 Calle Cataldo	7389114	Swimming Pool Cleaning And Maintenance	L
Johns Pool Repair	30025 Calle Halcon	7389114	Swimming Pool Cleaning And Maintenance	L
K G Pool Service	42200 Margarita Rd #1324	7389114	Swimming Pool Cleaning And Maintenance	L

CITY OF TEMECULA COMMERCIAL AND INDUSTRIAL FACILITIES LIST

(As of May 1, 2005)

FIRM NAME	ADDRESS	SIC NO	BUSINESS TYPE	PRIORITY
Miles Pool Service	29605 Solana Way #5t 3	7389114	Swimming Pool Cleaning And Maintenance	L
Peterson Pool & Spa	31715 Corte Rosario	7389114	Swimming Pool Cleaning And Maintenance	L
Poseidon Pool Service	29500 Mira Loma Dr # H 202	7389114	Swimming Pool Cleaning And Maintenance	L
Rancho Pool & Spa	30308 Santa Cecilia Dr	7389114	Swimming Pool Cleaning And Maintenance	L
Rincon Pools	39950 Hudson Ct	7389114	Swimming Pool Cleaning And Maintenance	L
Scrubs Pool Service	33238 Calle Langarica	7389114	Swimming Pool Cleaning And Maintenance	L
Snyder Maintenance	40555 La Colina	7389114	Swimming Pool Cleaning And Maintenance	L
Spa Doctor	40294 Calle Torcida	7389114	Swimming Pool Cleaning And Maintenance	L
Sunrise Pool Service	27498 Lark Ct	7389114	Swimming Pool Cleaning And Maintenance	L
Temecula Valley Pool Service / Jackson	44858 Corte Sevrina	7389114	Swimming Pool Cleaning And Maintenance	L
Wes Adams	42121 Orange Blossom Dr	7389114	Swimming Pool Cleaning And Maintenance	L
Temeku Hills Golf Club LLC	41687 Temeku Dr	7992001	Public Golf Courses	L
American Rider Inc	32831 Highway 79 So # A	7999058	Motorcycle Rental	L